



CITY VIEW SIMMENTALS & ABOUND LIVESTOCK

With Sunnyside Simmentals

11

th

TUESDAY, MARCH 23, 2021, Sale Time 1 pm
MOOSE JAW, SK, Johnstone Auction Mart

ANNUAL BULL SALE

City View Simmentals and Abound Livestock 11TH ANNUAL BULL SALE

With Sunnyside Simmentals

Tuesday, March 23, 2021, Sale Time: 1PM CST

Sale Location : Johnstone Auction Mart

Moose Jaw, Saskatchewan

4 miles west of Moose Jaw on the Trans Canada highway.

Monday 5:00 p.m.

View the bulls, enjoy refreshments and pizza.

Tuesday Lunch at 12:00 p.m.

Sale at 1:00 p.m.



WATCH AND BID ONLINE

Create your Bidding Account with DVAuction!

- Go to www.dvauction.com and click on "Create New Account".
- Fill in all fields and accept the Privacy Policy & Terms and Conditions. Click on Create New Account.
- On the next screen, click Apply for Bidding.
- Choose Option 1) Credit Card Approval or Option 2) Bank Approval
- * if you are not comfortable providing this info to DVAuction, that is ok! Call Sarah Buchanan at 306-681-5340
- Check your Email for an Account Activation message from DVAuction. Click this link and you are all ready to go.
- On sale day, log in to www.dvauction.com with your email address and password.
- Click the green "View" button beside the 11th Annual Cityview/Abound Livestock & Friends Bull Sale. This will take you to the sale site.
- Accept the Terms & Conditions (left side of screen) to get your bid button.
- Log in 1 hour before sale time to Practice Bidding.
- Let us make it even easier for you! Contact Sarah Buchanan at 306-681-5340 to get set up over the phone.
- DVAuction Tech Support 402-316-5460

TERMS AND CONDITIONS:

The terms of the sale are cash or cheque. All settlements must be made with the clerk following the sale before any cattle will be released.

Disputes: Bidding will be re-opened between the parties involved in the dispute. If no further bids are made, the buyer will be the person from whom the auctioneer accepted the last bid. The auctioneer's decision on all disputes will be final.

ANNOUNCEMENTS:

All announcements made from the auction block will take precedence over the printed material matter in the catalog. Buyers are therefore cautioned to pay attention to such disclosures.

ACCIDENTS:

Although every precaution will be taken to protect the safety and comfort of the buyers, neither the owner, the auctioneer of Association assumes any responsibility in this matter and disclaims any liability, legal or otherwise, in the event of accident or loss of property.

SALE DAY PHONES

Johnstone Auction Mart	306-693-4715
Blaine Barnett	306-631-6618
Brian Barnett	306-631-7539
Joe Barnett	403-465-2805
Tina Barnett	306-631-5183
Lisa Martin	306-684-5884
Tom Turnbull	306-527-6624
Aaron Birch	403-485-5518

SALE STAFF

Auctioneer, Scott Johnstone	306-693-4715 (business)
.....	306-631-0767 (cell)
Ringman, Nate Marin	306-869-7130 (cell)
Ringman, Don Oberg	780-678-6926 (cell)
DV Auction, Sarah Buchanan.....	306-681-5340 (cell)

FERTILITY

All bulls will be semen tested prior to the sale.

PHONE BIDS/SIGHT UNSEEN:

We hope you can visit the farm before the sale to make your selection or come early to Johnstones. If you can't make it, give us a call to discuss what you're looking for. If we have talked before, your satisfaction is guaranteed. Online bidding and videos will be available on dvauction.com

PRE-SALE MEAL:

Following government restrictions, a light lunch will be provided.

GUARANTEE:

All bulls sell under the terms and conditions of sale as recommended by the Canadian Simmental and Angus Associations.

INSURANCE:

We strongly recommend insuring your purchases sale day. See Larry Toner of Stockman's Insurance at the sale. 306-834-7652

ANGUS DELIVERY

Bring your trailer sale day and we'll deduct \$100.00 per bull from the purchase price. Bulls can return home with seller free of charge. We will begin arranging delivery following the sale and all bulls will be delivered by May 1. We do encourage you to insure your bull if he returns to the farm.

SIMMENTAL DELIVERY

Bring your trailer sale day and we'll deduct \$100.00 per bull from the purchase price or bulls can return to the farm until April 15. Bulls will be delivered free of charge up to 300 km from Moose Jaw at the seller's convenience as soon as possible following the sale. Other destinations can be arranged between the buyer and seller. Buyers are encouraged to insure their purchases.

Give us a call if you have any questions. We always do our best to work with you within reason.

Welcome to our 17th Annual Bull Sale! We're really proud to work as a family in the beef industry. We each have our own programs and different breeds but we work together often and share common goals to create the best possible product we can.

What a year we've all been through! The demand for a high quality food sources is higher than ever and that starts with cow/calf producers like you and us.

We want to thank the Mountenay Family of Ivanhoe Angus for partnering with us over the last 10 years. Ron and Marilyn have been great sale partners and friends. We wish them all the best as they work to 'slow down' a little bit! Brian and Lisa have been working hard at Abound Livestock and we're really proud to have them carry on the Angus division. Tom and Sharon from Sunnyside Simmentals are also back with four powerful bulls that have been developed at City View.

Now, more than ever, we hope to see you at the farm. The opportunity to visit with you one on one while we tour the cattle is something we look forward to. This is absolutely the greatest way to do your bull shopping! We want to know about your operation, what you're looking for in your new bull and we want to be sure you get exactly what you're after! We'd be happy to show you the bull's mother and the family behind him. It'd be an honour to have a cup of coffee with you. Then, on sale day, you can bid from the comfort of your home either online, over the phone or through one of our representatives. Please come see us!

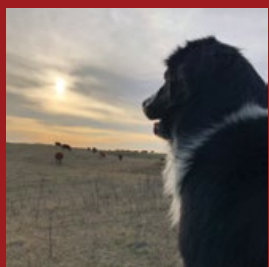
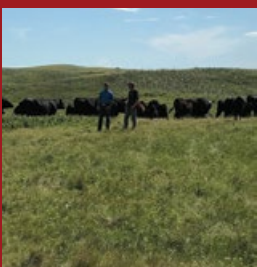
If you can't make it before the sale, give us a call and we'll see you sale day. The bulls will be at Johnstone's Sunday and you're of course welcome to tour there as well. Like you, we are doing our best to keep everyone safe and we appreciate you working with us.

The professional staff at Johnstone Auction are available as well if you have any questions or you'd like another opinion. We will have a restriction approved lunch on sale day so join us for that if you're in the area. We'll talk to you soon!

The Barnett Family



ABOUND IVESTOCK



Here we go again...welcome to our annual bull sale! It seems like yesterday we finished delivering the last group of bulls to their new homes. We want to thank all our buyers and bidders once again. Last year proved the strength of our industry and we are grateful that everyone adapted to the challenges we were handed. This year's offering is sired the same bulls as last year, but it is years like 2020 where tried and proven is not a terrible thing. We think there is a pile of good in this set to offer the cattle world. These bulls were developed on a 14% pelleted ration from Trouw Nutrition at 1.5% of body weight and grass hay from Oct. 5 weaning until sale day. Performance cattle are what we are building towards. Mother cows here are on the straight and narrow and they either do the job or leave...it is that simple. We know you need calves in the higher weight classes to get paid and we know it seems like margins are getting tighter and tighter. We feel these cattle will get you where you need to be. With that being said, you may notice that our 205's are a touch lower than last year, but it was due to grass and water conditions not genetics. Here is hoping for a pile more snow and some nice warm early spring rains to kick start 2021 growing season and start replenishing the pastures. It would be a relief to see the country green again!

As I sit and write this, we are just getting into the heart of calving our purebreds for the 5th time. The calf crop hitting the ground right now is exciting as we used two new sires this past breeding season. Border Butte Tannerite 350G was used on our heifers and some very high performing cows. We like what we are seeing so far, and these calves should have some added calving ease but lots of growth and power when you need it! The other bull is our very own Abound 923G, a Merger son that we retained the walking rights on from our 2020 sale. This bull caught our attention at a young age and we want to thank Mark and Diane Ferrara for allowing us to work with them this past season. Stay tuned for our 2022 sale as we offer new genetics

We would like to thank Ron and Marilyn at Ivanhoe Angus for giving us a chance to start this black venture and we wish them all the best in the future. Let's hope the world opens up and we can get back to having a good old fashioned bull sale on March 23. I am sure a lot of us could use an outing with some hospitality, good face to face conversations and handshake deals because that still means something here. In the meantime we welcome you to stop by the farm any time and view the bull pen.

Thank you and best of luck in 2021!

Brian & Lisa

At the Harvest Classic sale this past October, two females from the heart of our purebred program sold marking it as the first females to ever leave the Abound program. We would like to thank Storebo Farms for purchasing Abound Beauty 001H and Ivanhoe Angus for purchasing Abound Blackbird 008H. Two great females to two great homes!

4M ELEMENT 405

RS

1886671 / Purebred

POSS EASY IMPACT 0119
POSS ELEMENT 215
 POSS ERICA 004
 SITZ UPWARD 307R
4M BLACKBIRD 2004
 RIVERBEND BLACKBIRD 4301

Jan 3/14	IMP 405B
Act BW: 74	
Adj WW: 784	
Adj YW: 1460	

BW 0.3	WW 68	YW 115	Milk 20	CE 12	MCE 15
--------	-------	--------	---------	-------	--------



Son of Element



4M ELEMENT 405

4M Element 405, who walked the pastures of Peak Dot Ranch was selected for his length and depth as well as his tremendous EPD scores to breed our heifers by AI service. They come small with lots of vigour and get very stout in a short time. His shorter gestation helps keep birth weights down but they don't give up when it really matters. These sons are a great option for the heifer pen.

ABOUND ELEMENT 032H

1

2137246 / Purebred

POSS ELEMENT 215
4M ELEMENT 405
 4M BLACKBIRD 2004
 MERIT MERGER 6061D
ABOUND DNA PRIDE 819F
 IVANHOE DNA PRIDE 72B

Mar 4/20	BARN 032H
Act BW: 72	
Adj WW: 799	Adj YW: 1362
October 5/20 weight: 757	

BW 0.7	WW 63	YW 105	Milk 22	CE 8	MCE 13
--------	-------	--------	---------	------	--------



LOT 1

Abound 032H is one of our calving ease options this year. All the Elements we have raised have come with lower birth weights and rapid growth. At about 2 weeks of age, they really start to roll. Abound 032H's dam is 819F, one of our top Merger daughters that we have in production so far and is a full sister to lot 10. This cow family is growing fast simply because they do the job and do it well. Three generations, 18Z, 72B and 819F are all here in production and all have bulls in this offering. This guys maternal grand dam has a son working in our own commercial heifer pen with his 4th calf crop to hit the ground this spring.

ABOUND ELEMENT 011H

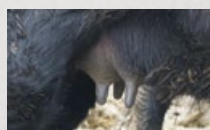
2

2137247 / Purebred

POSS ELEMENT 215
4M ELEMENT 405
 4M BLACKBIRD 2004
 MERIT MERGER 6061D
ABOUND QUEEN MOTHER 822F
 IVANHOE QUEEN MOTHER 1B

Jan 31/20	BARN 011H
Act BW: 75	
Adj WW: 700	Adj YW: 1168
October 5/20 weight: 741	

BW 1.3	WW 53	YW 95	Milk 21	CE 7	MCE 12
--------	-------	-------	---------	------	--------



Left: Dam of Lot 2
 Right: Dam of Lot 2 udder close up



LOT 2

One of our goals as producers is to raise animals that have the genetics and qualities behind them that they are able to get out and work. Boy oh boy did mother nature ever put this to the test this past year. With green grass blades few and far between, these young first calf heifers went out, fought the environment, and got the job done. This Abound 011H bull is proof of that. With just a 75lb birthweight, a below average birthweight EPD and an above average calving ease EPD, this is an ideal candidate for the heifer pen!



BLACK RIDGE HARVESTOR 66D

BLACK RIDGE HARVESTOR 66D

RS

1953049 / Purebred

SAV HERITAGE 6295
SAV HARVESTOR 0338
 SAV EMBLYNETTE 7749
 PEAK DOT PREDOMINANT 135S
BLACK RIDGE LEONA 22W
 BLACK RIDGE LEONA 22S

Feb 8/16	DUM 66D
Act BW: 95	
Adj WW: 755	
Adj YW: 1320	

BW 3	WW 53	YW 87	Milk 18	CE 2	MCE 7
------	-------	-------	---------	------	-------



Sire of Black Ridge Harvester

Black Ridge Harvester 66D is pure beef bull with incredible muscle shape. He is super correct with a beautiful, big foot and is one of the most easy keeping bulls you will find! In the spring of 2017, we were lucky to visit the Moleski's for a tour and then made the trip to Yorkton to be sure "John" came home to Abound. This is the third calf crop and he has continued to exceed our hopes! His daughters are milking and they're awesome mother cows. A bull that can leave you sound and attractive cattle in both the bull and heifer pens is very special!



LOT 3

ABOUND HARVESTOR 021H

3

2137236 / Purebred

S A V HARVESTOR 0338
BLACK RIDGE HARVESTOR 66D
 BLACK RIDGE LEONA 22W
 HF TIGER 98X
SUNNY GROVE ATLANTA 54B
 IVANHOE ATALANTA 41X

Feb 12/20	BARN 021H
Act BW: 89	
Adj WW: 727	Adj YW: 1285
October 5/20 weight: 824	

BW 1.5	WW 46	YW 76	Milk 22	CE 2.5	MCE 5.5
--------	-------	-------	---------	--------	---------



Dam of Lot 3

The presence of this Abound 021H bull makes him a standout in the bull pen. He truly demonstrates what this sire group has to offer. Small neat clean heads, a ton of bone and muscle pattern, lots of hair and a perfect foot. The disposition of these Harvester sons is second to none and this guy will never turn down the odd scratch or two!



LOT 4

ABOUND HARVESTOR 029H

4

2137233 / Purebred

S A V HARVESTOR 0338
BLACK RIDGE HARVESTOR 66D
 BLACK RIDGE LEONA 22W
 MERIT 2102
IVANHOE HEROINE A 37B
 IVANHOE HEROINE A 23Y

Feb 19/20	BARN 029H
Act BW: 79	
Adj WW: 678	Adj YW: 1143
October 5/20 weight: 748	

BW 0.2	WW 39	YW 68	Milk 20	CE 6	MCE 9
--------	-------	-------	---------	------	-------

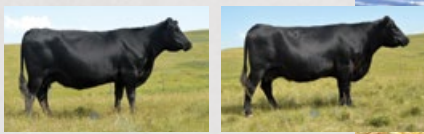


*Left: Dam of Lot 4
 Right: Brother to Lot 4*

This guys dam, 37B, has done some great things here at Abound. We sold a full brother last year to the Ruple family who weighed in at 1370 lbs sale day. We also have a full sister working in our herd right now and she is one of our top Harvester daughters in production. Unfortunately, 37B developed a respiratory problem that could not be treated this past spring. Given the times, she was known as Covid this summer. She did the best job she could to get this guy to the finish line but he was a touch light on his weaning weight. However, since weaning he hasn't skipped a beat.

Lot 5

We aren't really sure how this honest working Royal Pride cow does it every year, but we sure hope she never stops raising these big, long, powerful bulls. For the 3rd year in a row, this mamma's bull calf has tipped the scale coming weaning day. The length of spine and overall mass of Abound 015H is sure to catch your eye!



Left: Dam of Lot 5
Right: Granddam of Lot 5

ABOUND HARVESTOR 015H

5

2137235 / Purebred

S A V HARVESTOR 0338
BLACK RIDGE HARVESTOR 66D
BLACK RIDGE LEONA 22W
SANDY BAR IDEAL 185W 216Y
IVANHOE ROYAL PRIDE 52B
IVANHOE ROYAL PRIDE 3Z

Feb 7/20	BARN 015H
Act BW: 93	
Adj WW: 747	Adj YW: 1308
October 5/20 weight: 862	

BW 2.1	WW 46	YW 79	Milk 21	CE 2	MCE 7
--------	-------	-------	---------	------	-------

ABOUND HARVESTOR 035H

6

2137240 / Purebred

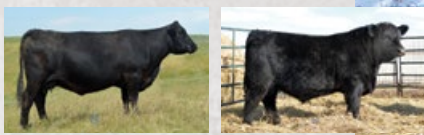
S A V HARVESTOR 0338
BLACK RIDGE HARVESTOR 66D
BLACK RIDGE LEONA 22W
R B TOUR OF DUTY 177
HI LOW QUEEN MOTHER 16D
HI LOW QUEEN MOTHER 67X

Mar 14/20	BARN 035H
Act BW: 82	
Adj WW: 753	Adj YW: 1273
October 5/20 weight: 737	

BW 0.7	WW 52	YW 89	Milk 24	CE 5	MCE 9
--------	-------	-------	---------	------	-------

Lot 6

Abound 035H is a middle of March calf making him the youngest bull in the pen. However, this young Harvestor calf doesn't give up any of the Harvestor qualities that his pen mates have to offer. In fact, he might just have the most overall mass in the entire pen. With his very consistent gains and backed by Queen Mother 16D who has done a tremendous job in our program, we are excited to keep watching as this bull matures!



Left: Dam of Lot 6
Right: Brother of Lot 6, sons will sell in 2022



LOT 7

ABOUND HARVESTOR 005H

7

2137234 / Purebred

S A V HARVESTOR 0338
BLACK RIDGE HARVESTOR 66D
 BLACK RIDGE LEONA 22W
 MERIT 2102
IVANHOE BLACK LUCY 41B
 IVANHOE BLACK LUCY 32Y

Jan 25/20	BARN 005H
Act BW: 94	
Adj WW: 689	Adj YW: 1319
October 5/20 weight: 831	

BW 2	WW 45	YW 79	Milk 17	CE 0	MCE 6
------	-------	-------	---------	------	-------

Incredible length, deep flanked and soggy are the best ways to describe 005H, just like Harvestor 66D himself. This is the first bull we have offered from the 41B cow as she has only produced heifers in the past. 41B is packed with the tools every ranch cow needs and simply goes about her work year after year. We think the best cattle are the ones you don't have to touch and she holds true to that statement!



LOT 8

ABOUND HARVESTOR 007H

8

2137229 / Purebred

S A V HARVESTOR 0338
BLACK RIDGE HARVESTOR 66D
 BLACK RIDGE LEONA 22W
 MERIT 8808
GLENDOR LASSIE 23A
 GLENDOR LASSIE 6U

Jan 26/20	BARN 007H
Act BW: 99	
Adj WW: 691	Adj YW: 1149
October 5/20 weight: 829	

BW 5.2	WW 46	YW 78	Milk 19	CE -7	MCE 3
--------	-------	-------	---------	-------	-------



Left: Dam of Lot 8
 Right: Maternal brother to Lot 8

The dam of this Abound 007H bull has become one of our favorites. Glendor 23A is that cow that proves herself year after year never missing a beat. We were excited last year when she had a heifer calf so we could grow this strong maternal family. However, this year she got back to doing what she does best...raising these powerful herd bulls. The only thing she left us to do is to find him some ladies!



MERIT MERGER 6061D

MERIT MERGER 6061D

RS

1923488 / Purebred

GDAR INSIGHT 7201
MERIT 77X
 MERIT SOCIALITE 5084
 BAR-E-L IRON WILL 32Y
MERIT M'BROOK LASS 3074
 MERIT M'BROOK LASS 9534

Feb 14/16	TJL 6061D
Act BW: 83	
Adj WW: 763	
Adj YW: 1344	

BW 6.6	WW 56	YW 104	Milk 22	CE -3	MCE 11
--------	-------	--------	---------	-------	--------

Merit Merger 6061D was selected to build a female base in our herd and his daughters are everything we had hoped they would be. If you raise your own replacement heifers then look no further than a 6061D son! His calves are long sided with a little bit of added stretch and have tremendous vigour and gain. These cattle are made to cover ground and do it with a lot of pride! This is the final group of Merger sons we will offer but his influence will continue for years to come.

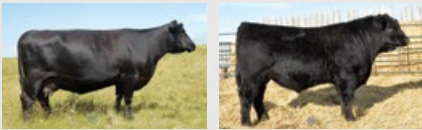
ABOUND MERGER 010H**9**

2137228 / Purebred

MERIT 77X
MERIT MERGER 6061D
 MERIT M'BROOK LASS 3074
 SANDY BAR IDEAL 185W 216Y
IVANHOE POLLYANNA 5A
 YOUNG DALE POLLYANNA 113Y

Jan 29/20	BARN 010H
Act BW: 81	
Adj WW: 697	Adj YW: 1277
October 5/20 weight: 832	

BW 1.7	WW 46	YW 80	Milk 24	CE 6	MCE 13
--------	-------	-------	---------	------	--------



Left: Dam of Lot 9
 Right: Brother to Lot 9

**LOT 9**

As we currently are in our 5th year of calving our purebred angus herd, there is some qualities about the angus breed that we admire more and more each year. The vigor of this breed is hard to describe until you experience it and there is no sire group that demonstrates this better than this Merger group and sons like Abound 010H. This bull is packed with strong maternal traits. We have retained two daughters from Abound 010H's dam, Pollyanna 5A. One daughter weaned an 800 lb heifer calf this past fall.

ABOUND MERGER 014H**10**

2137239 / Purebred

MERIT 77X
MERIT MERGER 6061D
 MERIT M'BROOK LASS 3074
 SANDY BAR IDEAL 185W 216Y
IVANHOE DNA PRIDE 72B
 IVANHOE DNA PRIDE 18Z

Feb 5/20	BARN 014H
Act BW: 101	
Adj WW: 688	Adj YW: 1404
October 5/20 weight: 797	

BW 6	WW 49	YW 89	Milk 21	CE -6	MCE 6
------	-------	-------	---------	-------	-------

**LOT 10**

Merit Merger 6061D was purchased to be the building base of our Abound replacement females and he did not disappoint. Abound 819F is a full sister to this 014H bull and has done a tremendous job raising lot 1. Just like 014H demonstrates, this group has that touch of added stretch and frame which will only add pounds to the scale come fall!

ABOUND MERGER 017H**11**

2137226 / Purebred

MERIT 77X
MERIT MERGER 6061D
 MERIT M'BROOK LASS 3074
 SANDY BAR INNOVATOR 46R
IVANHOE DNA PRIDE 18Z
 IVANHOE DNA PRIDE 38R

Feb 10/20	BARN 017H
Act BW: 95	
Adj WW: 760	Adj YW: 1442
October 5/20 weight: 867	

BW 5	WW 54	YW 96	Milk 20	CE -6	MCE 1
------	-------	-------	---------	-------	-------



Dam of Lot 11, Granddam of Lot 10

**LOT 11**

Big pastures? Want consistency in your calf crop? All three of these Merger sons would run together with great results and would cover ground like no other. These bulls are made to move. They have that touch of added frame, a big stride and are very athletic. If you raise your own replacement females or raise them to sell, these boys will basically print you money!

Welcome to the 2021 Bull Sale!! We are very grateful to again be a part of this great event. It is a pleasure to always be surrounded by such wonderful people and friends. Thank you to all past bidders and buyers as well as new customers attending for the first time. Your support of our program is much appreciated. Congratulations to the Barnett family for bringing an exceptional quality of bulls to present to you this year.



The goal of our program is to raise bulls which are structurally sound with moderate frame and birthweight to provide calving ease and convenience to the commercial cattle producer. We have developed cow families within our herd that we believe have the maternal traits to provide this level of productivity and consistency. Our bulls have been cared for by City View since being weaned last fall. Please feel free to call with any questions or contact City View if you are interested in viewing the bulls prior to the sale. All the best in the coming year!

Tom & Sharon Turnbull and family



SUNNYSIDE 4H **12**

CA-PG1319973 / Red / Homozygous Polled / Purebred

KWA ROCK 36B
CITY VIEW DAMASCUS 605D
 CITY VIEW 18T UNIQUE 428B
 ERIXON LAD 21C
TJT3F SUNNYSIDE 3F
 SUNNYSIDE HALEY 3Z

Jan 13/20	TJT 4H
Act BW: 85	
Adj WW: 854	
Adj YW: 1307	

CE 9.7	BW 2.3	WW 78.2	YW 107.6	Milk 29.4	MCE 4.8
--------	--------	---------	----------	-----------	---------

Sire of Lot 12, Brother of Lot 24



This is a bull we really should have kept, one of our last bulls sired by City View Damascus 605D. This bull resembles his sire with the attractive blaze face and exceptional growth and performance. We purchased City View Damascus 605D looking for calving ease and productivity. 605D did his job well siring calves consistent in their design and vigorous at birth. The dam of 4H is a dark red blaze face young cow with tremendous potential tracing back to our exceptionally productive Lazy Bar B Haley 3N cow family. 3F is developing into a great mother cow with loads of milk and she did a great job on this first calf. 4H also has the quiet disposition similar to his sire and dam.



SVS WALKER 719E **RS**

BPG1201376 / Black / Homozygous Polled / Purebred

NCB COBRA 47Y
MADER WALK THIS WAY 224B
 MADER P IRON SUGAR 7X
 SVS CAPTAIN MORGAN 11Z
SVS BLK ZOE 401B
 MRL MISS 405X

Jan 15/17	TLAS 719E
Act BW: 86	
Adj WW: 820	
Adj YW: 1449	

CE 10.5	BW 1	WW 73	YW 119.6	Milk 31.8	MCE 7.6
---------	------	-------	----------	-----------	---------

Sire of SVS Walker



SVS Walker 719E is our home polled, homo black walking herd sire. We have been more than impressed with the consistency he has produced siring calves with moderate frame, well balanced traits and an attractive muscle pattern. We are very excited to see the beautiful daughters we have in the replacement pen put into production.

SUNNYSIDE 73H

13

CA-BPG1319957 / Black / Homozygous Polled / Purebred

MADER WALK THIS WAY 224B	Mar 4/20	TJT 73H			
SVS WALKER 719E	Act BW: 101				
SVS BLK ZOEY 401B	Adj WW: 788				
DOUBLE BAR D TANKER 191Y	Adj YW: Not yet measured				
SUNNYSIDE 72C					
ERIXON LADY 72W					
CE 6.7	BW 3.2	WW 72.2	YW 116.1	Milk 28.5	MCE 4.4



Full sister to Dam of Lot 13



LOT 13

This deep and thick black bull sired by SVS Walker 719E has just a splash of white on his face. His dam 72C is a black blaze faced daughter of Double Bar D Tanker 191Y. She is a powerful, big volume cow with a width and depth that has a quiet disposition and a great hair coat. This bull is a little younger in our offering but he put up very respectable weights keeping up with the others in the fall.

SUNNYSIDE 3H

14

CA-BPG1319981 / Black / Polled / Purebred

MADER WALK THIS WAY 224B	Jan 3/20	TJT 3H			
SVS WALKER 719E	Act BW: 103				
SVS BLK ZOEY 401B	Adj WW: 720				
ERIXON RED RIOT 27U	Adj YW: 1254				
SUNNYSIDE HALEY 3Z					
LAZY BAR-B HALEY 3N					
CE 7.5	BW 2.8	WW 66.3	YW 101	Milk 28.7	MCE 6



LOT 14

This black bull with the attractive blaze face comes from a cow family with a tremendous history in our herd. His dam is a red blaze faced cow with excellent feet and a beautiful udder. She is one of those consistent producers that you are just proud to have in your herd. We purchased SVS Walker 719E looking for a black calving ease bull that would not compromise performance and growth. We are now into his third calf crop and are continuing to be impressed with his consistency. He is definitely leaving some beautiful daughters in the replacement pen. All his calves have been born unassisted in our herd.

SUNNYSIDE 33H

15

CA-BPG1319967 / Black / Homozygous Polled / Purebred

MADER WALK THIS WAY 224B	Jan 2/20	TJT 33H			
SVS WALKER 719E	Act BW: 88				
SVS BLK ZOEY 401B	Adj WW: 738				
CITY VIEW DAMASCUS 605D	Adj YW: 1295				
TJT32F SUNNYSIDE 32F					
SUNNYSIDE BAILEY 32D					
CE 9.8	BW 1.3	WW 72.6	YW 111.3	Milk 29.3	MCE 6.1



LOT 15

This stout made, deep and thick, solid black bull is also mothered by a young, blaze faced red cow that we feel has a tremendous future in front of her. There is super maternal power and longevity in this cow family. 33H dam is also sired by City View Damascus 605D who not only provided us with some great bulls but some productive females as well. 33H has a moderate 88lb birthweight and above breed average calving ease EPD like his sire, SVS Walker 719E.



Welcome to our 11th Annual Bull Sale! As 2020 furthers in the rearview mirror, we look forward to things maybe getting back to normal in the near future. Thank you to our past customers for their support of our program.

No doubt, this set of bull is our most exciting and consistent ever. We're proud to offer some exciting new genetic opportunities as well as some tried and tested ones. The bulls were weaned early September and turned out onto a 20 acre pasture where we started them onto the pelleted ration they're still on. The bulls stayed out until December and although you will find heavier Simmental bulls, we're really proud of the athletic condition we've maintained. We believe this is one of the most important factors to longevity. They've always got grass hay and we use a 14% protein pellet along with our own brown oats. We also utilize a whole herd health program from Zoetis.

One change we made this year was moving to Trouw Nutrition as our pellet provider. The pellet is the same as past years but the customer service and interest Jessica Hextall takes in what we're doing is second to none.

We really want to encourage everyone to stop by the farm before the sale and look through the bulls. We'll happily tour your through the cowherd with their new calves. We're proud of what we've built over the last 21 years! This will let us have a visit without worrying about all the restrictions we need to follow sale day.

Tina and I would like to thank Aaron for picturing the bulls on some cold days and also Joe for putting everything together for the catalog. We're excited to work with Pittman Print Media this year to design the book.

Follow our Facebook page for updates and videos as well as the Johnstone's page and DV Auction. The bulls are available for viewing here anytime between now and March 20 then they'll be at Johnstones. We're going to have pizza on Monday night at 5:00 if you'd like to join us as well.

In closing, we'd like to thank our past customers again and welcome anyone going through our bulls for the first time. We're confident we've got a bull that will work well for you and we look forward to visiting soon! Call anytime!

*The Barnetts
Blaine and Tina, Brody & Addison*

CITYVIEW HARLEY 42H

16

CA-P1308760 / Red / Polled / Purebred

VIRGINIA MAXIMUS
ANCHOR D RAPTOR 392C
 ANCHOR D ZILEY 392Z
 BEE VORTEX 12A
KEET'S CAMISHA 4C
 KEET'S YAMARA 32Y

Jan 18/20	CVBB 42H
Act BW: 96	
Adj WW: 695	
Adj YW: 1236	

CE 12.9	BW 3.2	WW 77.5	YW 114.9	Milk 40.1	MCE 8.6
---------	--------	---------	----------	-----------	---------



Left: Lot 16 and Dam
 Right: Sire of Lot 16



LOT 16

- Cherry red, polled, full fleck bull with a lot of character and look about him.
- He was impressive to watch all summer beside his moderate framed, beautiful mother.
- Impressive EPD profile including top 10% for calving ease. Maternal powerhouse!

CITYVIEW HARRY 28H

17

CA-1308693 / Red / Dehorned / Purebred

JNR STEELE 248Z
JNR'S TITANIUM
 MFI LOLITA 8050
 STARWEST POL BLUEPRINT
CITY VIEW ADDIE 58F
 KINDRED SPIRIT ADDIE 55A

Jan 15/20	CVBB 28H
Act BW: 85	
Adj WW: 635	
Adj YW: 1141	

CE 15.8	BW 0.7	WW 60.3	YW 82.1	Milk 35.1	MCE 9.4
---------	--------	---------	---------	-----------	---------



Left: Granddam of Lot 17
 Right: Sire of Lot 17



LOT 17

- Harry offers unparalleled calving ease in the top 1% of the breed, a pedigree to match.
- Dam's maternal brother was one of our feature bulls in 2018 to Trevor Benson and Bonnie Brandt
- Moderate frame for years of use in the heifer pen.

INNOVATIVE
PRODUCTS
 ENHANCING YOUR NUTRITION
PROGRAM
 MAKING YOU MORE
PROFITABLE

Contact your beef territory
 manager to learn more:

Jessica Hextall (204)901-3058

trouw nutrition
 a Nutreco company

Lot 18



LOTS 18-21
Full Flush
BROTHERS



Dam of Lot 18-21



Granddam of Lot 18-21



Sire of Lot 18-21

Lot 19



CITYVIEW HIGH CREEK 51H **18**

UNR1311517 / Red / Polled / Purebred

DOUBLE BAR D MAESTRO 100S
ANCHOR D VIPER 103W
PRL LOPEZ 147L
BLACK GOLD EPIC 14Z
ANCHOR D / CD KALISTA 263F
ANCHOR D KAEL 255C

Jan 20/20	CVBB 51H
Act BW: 104 (ET)	
Adj WW: 758	
Adj YW: 1374	

CE 7.1	BW 1.5	WW 60.6	YW 90.8	Milk 39.5	MCE 5.6
--------	--------	---------	---------	-----------	---------

CITYVIEW HIGH ROLLER 76H **19**

UNR1311525 / Red / Polled / Purebred

DOUBLE BAR D MAESTRO 100S
ANCHOR D VIPER 103W
PRL LOPEZ 147L
BLACK GOLD EPIC 14Z
ANCHOR D / CD KALISTA 263F
ANCHOR D KAEL 255C

Jan 25/20	CVBB 76H
Act BW: 105 (ET)	
Adj WW: 804	
Adj YW: 1436	

CE 8.8	BW 4.2	WW 78.8	YW 125.9	Milk 39.5	MCE 6.6
--------	--------	---------	----------	-----------	---------

It's really exciting for us to offer these four flush mate brothers. We've been working hard over the past few years to build our fullblood program after years of focusing on the red and black cattle. One of the first steps to building that was bringing in a foundation donor female. Enter Anchor D/CD Kalista 263F from the illustrious Friday Night Lights event. She was one of the feature fullbloods in that sale and we stepped up and got her bought. These first sons are the result of a flush to the prominent polled bull, Anchor D Viper. These bulls have two sisters at home who will direct the path of our fullblood division moving forward.

Lot 20



Lot 21



CITYVIEW HELL ON WHEELS 92H 20

UNR1311527 / Red / Scurred / Purebred

DOUBLE BAR D MAESTRO 100S
ANCHOR D VIPER 103W
 PRL LOPEZ 147L
 BLACK GOLD EPIC 14Z
ANCHOR D / CD KALISTA 263F
 ANCHOR D KAEL 255C

Jan 29/20	CVBB 92H
Act BW: 106 (ET)	
Adj WW: 846	
Adj YW: 1460	

CE 5.9	BW 1.2	WW 62.4	YW 97.3	Milk 39.5	MCE 4.9
--------	--------	---------	---------	-----------	---------

CITYVIEW HIKER 63H 21

UNR1311522 / Red / Dehorned / Purebred

DOUBLE BAR D MAESTRO 100S
ANCHOR D VIPER 103W
 PRL LOPEZ 147L
 BLACK GOLD EPIC 14Z
ANCHOR D / CD KALISTA 263F
 ANCHOR D KAEL 255C

Jan 23/20	CVBB 63H
Act BW: 94 (ET)	
Adj WW: 693	
Adj YW: 1229	

CE 5.4	BW 3.5	WW 69.5	YW 110.2	Milk 39.5	MCE 4.6
--------	--------	---------	----------	-----------	---------

These bulls are all very similar in their type and makeup with loads of dark pigment, tons of shape and muscle and a big time pedigree behind them. Lots 18 and 19 are smooth polled while lot 20 has a small scur and lot 21 has been dehorned. We go back and forth over which one we prefer and there's been a lot of family debate over it. We really believe you can't go wrong with any one of the four and we're excited to see these bulls work. They are the right kind and we're very proud they carry the City View name.



MADER THE NATIONAL 43E

MADER THE NATIONAL 43E

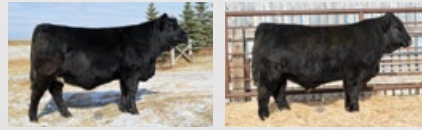
RS

BPTG1205672 / Black / Homozygous Polled / Purebred

LFE BS CHARO 23Y
LFE GOTHAM 819Y
 NCB COBRA 47Y
 LFE BS VIOLET 641A
LFE THE RIDDLER 323B
 LFE BS VIOLET 128Z

Jan 12/17	MDR 43E
Act BW: 80	
Adj WW: 959	
Adj YW:	

CE 10.1	BW 3	WW 100.4	YW 164.8	Milk 26.1	MCE 8.6
---------	------	----------	----------	-----------	---------



Left: Daughter of The National
 Right: Son of The National

This is the second group of calves we've had from The National and we can't get enough of them! Consistently, The National leaves stoutness, hair, sound structure and a soft, easy doing design in his calves. We've got 11 National daughters at home and we sold two more last fall that lead off the Red & Black sale in Red Deer. We've used him on select heifers and are impressed with how he combines calving ease and power.



LOT 22

CITYVIEW HUGO 47H

22

CA-PG1308782 / Red / Homozygous Polled / Purebred

LFE THE RIDDLER 323B
MADER THE NATIONAL 43E
 LFE BS VIOLET 641A
 CITY VIEW ASTEROID 333A
CITY VIEW SKYLAR 512C
 SUNNYSIDE SKYLAR 451Z

Jan 19/20	CVBB 47H
Act BW: 90	
Adj WW: 637	
Adj YW: 1151	

CE 10.4	BW 1.5	WW 73	YW 109.9	Milk 26.5	MCE 9.1
---------	--------	-------	----------	-----------	---------

- Hugo is a smaller framed bull with respectable calving ease and birth weight values.
- He is homo polled, good haired.
- His mother goes back to the Asteroid bull we sold to Sunnyside.



LOT 23

CITYVIEW HESSTON 45H

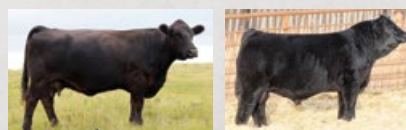
23

CA-BPG1308779 / Black / Homozygous Polled / Purebred

LFE THE RIDDLER 323B
MADER THE NATIONAL 43E
 LFE BS VIOLET 641A
 HARVIE BOONDOCK 12Z
CITY VIEW RAVEN 656D
 3D MISS BLK RAVEN 127T

Jan 18/20	CVBB 45H
Act BW: 95	
Adj WW: 629	
Adj YW: 1152	

CE 8.7	BW 2.8	WW 74.9	YW 111.1	Milk 29.4	MCE 5.1
--------	--------	---------	----------	-----------	---------



Left: Granddam of Lot 23 & 27
 Right: Grandsire of Lot 23, 24 & 27

- A homo polled and hetero black son of the National.
- Hesston is good footed, smooth shouldered and has a great skull shape.
- His mother is a Boondock back to the great Raven 127T whose influence is strong in our herd.

Lot 24

- Harrison is a son of the popular National who's worked so well for us. We love the National cattle!
- From the Unique cow family so tons of maternal in a homo polled, dark red, hairy package.
- He is smooth shouldered, balanced from the side profile and offers huge performance.



Left: Granddam of Lot 24
Right: Brother of Lot 24

CITYVIEW HARRISON 73H 24						CITYVIEW HOLDEM 86H 25																		
CA-PG1311373 / Red / Homozygous Polled / Purebred						CA-BPG1311388 / Homozygous Black / Homozygous Polled / Purebred																		
LFE THE RIDDLER 323B		MADER THE NATIONAL 43E		LFE BS VIOLET 641A		HARVIE BOONDOCK 12Z		CITY VIEW 18T UNIQUE 428B		CITY VIEW TEAR JERKER 18T		LFE THE RIDDLER 323B		MADER THE NATIONAL 43E		LFE BS VIOLET 641A		JF/AJE RENDITION 738T		CITY VIEW XTRAVAGANCE 12X		3D MISS RIGHT ON 131T		
Jan 25/20		CVJB		73H		Act BW: 106		Adj WW: 645		Adj YW: 1234		Jan 27/20		CVBB		86H		Act BW: 105		Adj WW: 699		Adj YW: 1249		
CE 7	BW 4.3	WW 87.8	YW 130.2	Milk 26.2	MCE 2.9	CE 8.2	BW 3.4	WW 84.1	YW 129.5	Milk 27.8	MCE 8.1													

Lot 25

- Holdem is a well put together, homo polled and homo black National son.
- He is smooth fronted, good hipped and sure to catch your eye!
- Mothered by our influential 12X cow with maternal brothers to McLaren Farms and Arguins. We also have maternal sisters working here.



Left: Dam of Lot 25
Right: Sister of Lot 25



LOT 26

CITYVIEW HECTOR 82H

26

CA-BPG1311384 / Homozygous Black / Homozygous Polled / Purebred

LFE THE RIDDLER 323B
MADER THE NATIONAL 43E
 LFE BS VIOLET 641A
 MRC BROKER 6Z
CITY VIEW RIGHT 6E
 CITY VIEW 12X RIGHT 408B

Jan 26/20	CVBB 82H
Act BW: 100	
Adj WW: 635	
Adj YW: 1225	

CE 7	BW 3.6	WW 83.3	YW 132	Milk 27.8	MCE 4.3
------	--------	---------	--------	-----------	---------



Left: Granddam of Lot 26
 Right: Grandsire of Lot 26 & 30

- Another National son who puts all the pieces together complete with the chrome money stripe.
- Homo polled and homo black with a tidy front end and attractive muscle pattern.
- Hector goes back to the Right cow family, we flushed his great grand dam.



R PLUS SWAYZEE 8083E

R PLUS SWAYZEE 8083E

RS

BPG1222118 / Black / Homozygous Polled / Purebred

IPU MS 56U LINER 15A
WFL ABSOLUTE 51Y
 LFE RICH RAY 369Z
 MISS R PLUS 4059B
R PLUS 5015C
 MISS R PLUS 3158N

Feb 3/17	LRPS 7083E
Act BW: 90	
Adj WW: 863	
Adj YW: 1490	

CE 3.8	BW 3.8	WW 91.2	YW 134.6	Milk 22	MCE -0.4
--------	--------	---------	----------	---------	----------



Daughter of Swayze

Swayze is a new addition to our sire line up through AI and we appreciate the consistency he left in putting some chrome onto his calves. He ranks at the top of the breed for performance values and we appreciate the foot and structure quality he has sired as well.



LOT 27

CITYVIEW HAWK 67H

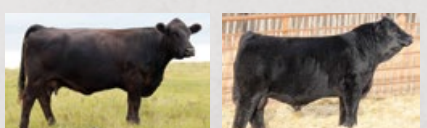
27

CA-BPG1311365 / Homozygous Black / Homozygous Polled / Purebred

R PLUS 5015C
R PLUS SWAYZE 7083E
 MISS R PLUS 4059B
 HARVIE BOONDOCK 12Z
CITY VIEW 127T RAVEN 477B
 3D MISS BLK RAVEN 127T

Jan 23/20	CVBB 67H
Act BW: 104	
Adj WW: 711	
Adj YW: 1258	

CE 4.7	BW 4.1	WW 82.1	YW 115	Milk 27.1	MCE -1.6
--------	--------	---------	--------	-----------	----------



Left: Granddam of Lot 23 & 27
 Right: Grandsire of Lot 23, 24 & 27

- Hawk is homo polled and homo black with that valuable baldie face.
- A long bodied and heavy muscled bull whose very sound on the move.
- His dam is from the prolific Raven cow family, a maternal sister at home and a maternal brother sold to Rafter C Ranch.

CITYVIEW HUNTER 46H

28

CA-BPG1308781 / Homozygous Black / Homozygous Polled / Purebred

R PLUS 5015C
R PLUS SWAYZE 7083E
 MISS R PLUS 4059B
 LFE THE RIDDLER 323B
KWA MS RIDDLER 34D
 BBN MS LADY DYNAMITE 16S

Jan 18/20	CVBB 46H
Act BW: 105	
Adj WW: 707	
Adj YW: 1344	

CE 2.2	BW 5.9	WW 100.1	YW 155.8	Milk 24.5	MCE 0.5
--------	--------	----------	----------	-----------	---------



Grandsire of Lot 28



LOT 28

- Homo polled and homo black with a great disposition and an attractive profile.
- Ranks in the top 1% for weaning and yearling EPD's.
- His dam also raised our new herdsire, Firestorm, and we also have a maternal sister.

CITYVIEW HOUSTON 81H

29

CA-BPG1311383 / Homozygous Black / Homozygous Polled / Purebred

R PLUS 5015C
R PLUS SWAYZE 7083E
 MISS R PLUS 4059B
 MRL STERLING BLACK 138Z
TRI-R MS DESIREE 13D
 REHORST STUBBY ZANA 407B

Jan 26/20	CVBB 81H
Act BW: 99	
Adj WW: 654	
Adj YW: 1334	

CE 6.3	BW 3.3	WW 82.1	YW 129.9	Milk 25	MCE 1.1
--------	--------	---------	----------	---------	---------



Grandsire of Lot 29



LOT 29

- Houston is homo polled and homo black, clean fronted, deep bodied.
- He's exploded since weaning and is really impressive on the move.
- We have a maternal sister in the herd at home.

CITYVIEW HARD ROCK 117H

30

CA-BPG1311425 / Homozygous Black / Homozygous Polled / Purebred

R PLUS 5015C
R PLUS SWAYZE 7083E
 MISS R PLUS 4059B
 MRC BROKER 6Z
CITY VIEW RAVEN 94E
 CITY VIEW 127T RAVEN 55Z

Feb 14/20	CVBB 117H
Act BW: 97	
Adj WW: 681	
Adj YW: 1260	

CE 3	BW 4.4	WW 82.9	YW 126.8	Milk 23.9	MCE -1.5
------	--------	---------	----------	-----------	----------



Left: Granddam of Lot 30
 Right: Brother of Lot 30



LOT 30

- Another bull from the Raven cow family that consistently outdoes themselves.
- Hard Rock is long bodied, good footed and blaze faced.
- A maternal brother sold to 2E Ranch Ltd.



SVS TYCOON 841F

SVS TYCOON 841F

RS

PG1235896 / Red / Homozygous Polled / Purebred

SVS RED SARA 92X
MRL RED WHISKEY 101B
 ACS EVERREADY 970W
 SVS RED ANNIE 411B
SVS BROOKS 669D
 3D MISS RED NOREMAC 211U

Jan 15/18	TLAS 841F
Act BW: 103	
Adj WW: 957	
Adj YW: 1594	

CE 4.5	BW 4.9	WW 103.4	YW 152	Milk 31.6	MCE 1.4
--------	--------	----------	--------	-----------	---------



Left: Daughter of Tycoon
 Right: Sire of Tycoon

Tycoon was one of the feature bulls to sell through the Sunny Valley sale for \$75,000 and we were quick to buy a semen pack. We are thrilled with the quality he has left for us! His calves are high performing, hairy and big middled. His daughters are also a pretty big deal for us with a dozen heifers in the replacement pen as well as one of the lead off heifer calves we offered last fall at Red & Black.



LOT 31

CITYVIEW HAYES 21H

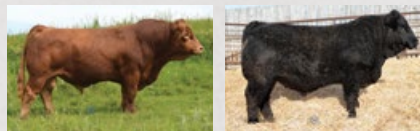
31

CA-PG1308701 / Red / Homozygous Polled / Purebred

SVS BROOKS 669D
SVS TYCOON 841F
 SVS RED ANNIE 411B
 BOUNDARY STUBBY 129A
CV 681D
 CITY VIEW XANTHEMIA 36X

Jan 11/20	CVJB 21H
Act BW: 100	
Adj WW: 690	
Adj YW: 1264	

CE 3.3	BW 5.9	WW 86.7	YW 125.2	Milk 28.2	MCE 0.7
--------	--------	---------	----------	-----------	---------



Left: Grandsire of Lot 31 & 38
 Right: Brother of Lot 31

- Hayes is deep red, deep ribbed, strong topped and homo polled.
- A big performance bull by Tycoon. We love our Tycoon daughters at home.
- His mother's pedigree includes Stubby and Ishee - female makers!



LOT 32

CITYVIEW HANK 23H

32

CA-PG1308696 / Red / Homozygous Polled / Purebred

SVS BROOKS 669D
SVS TYCOON 841F
 SVS RED ANNIE 411B
 LRX ROCKET 51B
CITY VIEW TAKALA 22E
 GREEN SPRUCE TAKALA 10T

Jan 12/20	CVBB 23H
Act BW: 98	
Adj WW: 672	
Adj YW: 1251	

CE 3.9	BW 5.5	WW 89.3	YW 136.2	Milk 32	MCE 2
--------	--------	---------	----------	---------	-------

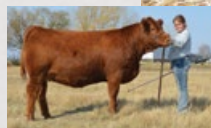


Left: Granddam of Lot 32
 Right: Grandsire of Lot 32

- Hank is long bodied, well muscled and backed by a ideal mother cow with a half fullblood pedigree.
- Above average milk numbers and top 10% EPD's for weaning and yearling.
- A maternal brother sold last year to Shiloh Cattle.

Lot 33

- A homo polled, stout, deep red stud that's a true feature in our offering!
- From the Boss Lady cow family, his dam's sister was Supreme Female in the Agribition Junior Spotlight for the kids last fall. Another sister to his dam sold to Sun Star Simmentals.
- Disposition, big time performance, exceptional EPD profile and all the bells and whistles!



Left: Maternal sister to Lot 33's Dam
Right: Maternal sister to Lot 33's Dam

CITYVIEW HOLDEN 11H **33**

CA-PG1308698 / Red / Homozygous Polled / Purebred

SVS BROOKS 669D	Jan 6/20	CVJB 11H
SVS TYCOON 841F	Act BW: 90	
SVS RED ANNIE 411B	Adj WW: 701	
LRX BLAZE 55Z	Adj YW: 1314	
CITY VIEW BOSS LADY 23E		
CITYVIEW 16U BOSSLADY309A		

CE 7.2	BW 3.5	WW 95.1	YW 141.6	Milk 28.4	MCE 4.1
--------	--------	---------	----------	-----------	---------

CITYVIEW HICKORY 89H **34**

CA-PG1311391 / Red / Homozygous Polled / Purebred

SVS BROOKS 669D	Jan 28/20	CVBB 89H
SVS TYCOON 841F	Act BW: 101	
SVS RED ANNIE 411B	Adj WW: 691	
BLACKGOLD MIND GAME 129C	Adj YW: 1227	
CITY VIEW NORDICA 63E		
CITY VIEW 29W NORDICA 13Z		

CE 4.6	BW 5.6	WW 88.2	YW 130.7	Milk 26.6	MCE 3
--------	--------	---------	----------	-----------	-------

Lot 34

- The first calf crop of the \$75,000 Tycoon is extremely impressive and high performing.
- Hickory is homo polled and was mothered by a former show heifer for the kids.
- A maternal brother sold to Spring Water Ranch.



Left: Granddam of Lot 34
Right: Brother of Lot 34



WHF LIMITLESS B011

WHF LIMITLESS B011

RS

PTG1199414 / Red / Homozygous Polled / Purebred

MS MAXIE LOU M112S
TNT TOP GUN R224
 CNS DREAM ON L186
 WHF SIERRA 245S
JF MILESTONE 999W
 WHF BLACK JASMINE 240J

Feb 10/14	FGN 011B
Act BW:	
Adj WW:	
Adj YW:	

CE 10.4	BW 0.5	WW 66.6	YW 99.3	Milk 15.2	MCE 6.7
---------	--------	---------	---------	-----------	---------

We've used Limitless through AI, primarily on heifers as he was widely throughout our breed. Limitless will moderate birthweight and his calves have proven to have a lot of vigour at birth which is such a desirable trait. He's also left us real character and presence which we appreciate in cattle. His sons here are moderate framed, heavy muscled and really offer a balance of traits.



LOT 35

CITYVIEW HENDRIX 26H

35

CA-PG1308690 / Red / Homozygous Polled / Purebred

JF MILESTONE 999W
WHF LIMITLESS B011
 WHF SIERRA 245S
 BGS/BM CAPTAIN SCREAM 63D
CITY VIEW YOLANDA 17F
 CITY VIEW YOLANDA 540C

Jan 14/20	CVBB 26H
Act BW: 91	
Adj WW: 766	
Adj YW: 1291	

CE 5.4	BW 3.4	WW 85.7	YW 125	Milk 21.3	MCE 2.6
--------	--------	---------	--------	-----------	---------



Grandsire of Lot 35 & 36

- Hendrix is deep, long bodied and homo polled
- A high performing son of Limitless with impressive weaning and yearling ratios.
- His two year old Captain Scream mother has a power pedigree and did a great job on him!



LOT 36

CITYVIEW HALO 31H

36

CA-PG1308718 / Red / Polled / Purebred

JF MILESTONE 999W
WHF LIMITLESS B011
 WHF SIERRA 245S
 BGS/BM CAPTAIN SCREAM 63D
CITY VIEW BOSS LADY 13F
 CITY VIEW WEDGEWOOD 9W

Jan 16/20	CVJB 31H
Act BW: 104	
Adj WW: 709	
Adj YW: 1154	

CE 3	BW 5.6	WW 79.4	YW 110.3	Milk 22.3	MCE 2.3
------	--------	---------	----------	-----------	---------



Granddam of Lot 36

- Halo is a hairy rascal with a pedigree filled with influential cattle.
- A really attractive son of Limitless who we've used very successfully on heifers.
- His mother is a direct Captain Scream daughter off one of our favourite Boss Lady cows.

BERTS DAKOTA 7D

RS

PG1161615 / Red / Homozygous Polled / Purebred

ERIXON LADY 10U	Jan 7/16	NRD 7D
HARVIE JDF WALBANGER 111X	Act BW: 94	
LFE BLACK LAKOTA 385W	Adj WW: 779	
SWAN LAKE NORMAC 75Y	Adj YW: 1355	
ERIXON REVELSTOCK 41A		
3D MISS RED NORMAC 41T		
CE 5.8	BW 5.4	WW 84.9
YW 133	Milk 32.1	MCE -1.4



Dam of Berts Dakota



BERTS DAKOTA 7D

Bert is our walking red power bull who offers major maternal capability and high performance. We really appreciate his foot structure and soundness. His dam is a beautiful cow who left her mark in terms of overall dimension, volume, and depth from end to end. This is his third calf crop and his daughters look great as they've come into production.

CITYVIEW HARVEY 71H

37

CA-PG1311370 / Red / Homozygous Polled / Purebred

ERIXON REVELSTOCK 41A	Jan 24/20	CVJB 71H
BERTS DAKOTA 7D	Act BW: 102	
SWAN LAKE NOREMAC 75Y	Adj WW: 763	
KWA ROCK 36B	Adj YW: 1385	
CITY VIEW TARA 663D		
CITY VIEW 15Y TARA 429B		
CE 7.2	BW 4.7	WW 92.7
YW 144.6	Milk 31.5	MCE 1.9



Grandsire of Lot 37



LOT 37

- Harvey is a big performance bull with a bit more frame and power.
- Homo polled and blaze faced, he ranks in the top 3% of the breed for weaning and yearling EPD's.
- A maternal brother sold to Todd Esmond.

CITYVIEW HIPPY 120H

38

CA-PG1311434 / Red / Homozygous Polled / Purebred

ERIXON REVELSTOCK 41A	Feb 17/20	CVJB 120H
BERTS DAKOTA 7D	Act BW: 99	
SWAN LAKE NOREMAC 75Y	Adj WW: 730	
BOUNDARY STUBBY 129A	Adj YW: 1231	
CITY VIEW TARA 88E		
CITY VIEW 33T TARA 468B		
CE 5.5	BW 4.7	WW 76.8
YW 110.5	Milk 31.9	MCE 0.4



Left: Brother of Lot 38
Right: Sister to Dam of Lot 38



LOT 38

- Sired by our Bert bull, Hippy is the youngest bull in our group with a highly maternal pedigree.
- His young dam already has a great production record with a maternal brother working for Beryl and Wendell Campbell.
- We sold a maternal sister to his dam at Red and Black to CL Farms in Alberta



CITYVIEW HOLT 25H 39

CA-SG1308714 / Red / Scurred / Purebred

CITY VIEW DAMASCUS 605D
TJT2F SUNNYSIDE 2F
 ERIXON LADY 2C
 LCHMN BODYBUILDER 7303F
CITY VIEW NORDICA 643D
 CITY VIEW XCELLENCE 18X

Jan 14/20	CVBB 25H
Act BW: 102	
Adj WW: 714	
Adj YW: 1316	

CE 6.9	BW 5.3	WW 76.2	YW 113.4	Milk 27.9	MCE 4.1
--------	--------	---------	----------	-----------	---------



Left: Dam of Lot 39
 Right: Sire of Lot 39

- The first son of our new blaze faced herd sire from the Sunnyside program who was a high seller through this sale two years ago.
- Holt is long bodied, has a great disposition and awesome feet.
- A maternal sister sold to Skyline Simmentals and they love her!



CITYVIEW HUDSON 87H 40

CA-PG1311389 / Red / Homozygous Polled / Purebred

KWA FLYF RED MOUNTAIN 16Z
HARVIE RED SUMMIT 54B
 HARVIE DAKOTA ROSE 11Z
 BERTS DAKOTA 7D
CITY VIEW MISCHESTER 37F
 SUNNYSIDE MISCHESTER 641W

Jan 27/20	CVBB 87H
Act BW: 104	
Adj WW: 799	
Adj YW: 1377	

CE 5.2	BW 3.8	WW 92.7	YW 144.9	Milk 29.9	MCE 0.2
--------	--------	---------	----------	-----------	---------



Sire of Lot 40

- Our only son of Summit in the offering this year with an impressive EPD profile.
- He's a larger framed bull who would be an ideal mating to moderate females to add power and growth.
- Hudson was mothered by a two year old Bert daughter with a great udder.



CITYVIEW HOWARD 17H 41

CA-PG1308697 / Red / Homozygous Polled / Purebred

DCR MR MOON SHINE X102
TNT 90 PROOF Z401
 TNT MISS S17
 LCHMN BODYBUILDER 7303F
CITY VIEW KORA 5E
 CITY VIEW XCEPTIONAL 17X

Jan 11/20	CVBB 17H
Act BW: 92	
Adj WW: 686	
Adj YW: 1299	

CE 6	BW 4.1	WW 83.3	YW 127.5	Milk 29.8	MCE 3
------	--------	---------	----------	-----------	-------



Left: Sire of Lot 41
 Right: Granddam of Lot 41

- Howard is homo polled, long bodied and dark red.
- Top 20% of the breed for weaning and yearling EPD's.
- From the Kora cow family, a maternal brother sold to Mark Lenz.

TLSS DJIMON 64D

RS

PTG1191587 / Red / Homozygous Polled / Purebred

PORTERS 234T
ERIXON DEALER 63Z
 TCF/RCC TEMPTATION GJ640
 CHUB'S FLIRT 6P
ERIXON WHY NOT 111B
 REICH TINA 45M

Jan 10/16	RYAN 64D
Act BW: 92	
Adj WW: 709	
Adj YW: 1373	

CE 3.9	BW 5.5	WW 77.6	YW 114.9	Milk 20.7	MCE 1.6
--------	--------	---------	----------	-----------	---------



TLSS DJIMON 64D



Dam of Djimon

This is the last sire group from 64D who spent his career in our pastures. We bought him largely because of his World Champion mother. We believe strongly in incorporating the best possible females into our herd and in the importance of cow families. Not only did he leave us some great females, his sons have been very well received here as well.

CITYVIEW HOCK 88H

42

CA-BPG1311390 / Black / Polled / Purebred

ERIXON WHY NOT 111B
TLSS DJIMON 64D
 CHUB'S FLIRT 6P
 DOUBLE BAR D TANKER 191Y
SUNNYSIDE 30C
 JHSN CLUB QUEEN 30Y

Jan 27/20	CVBB 88H
Act BW: 97	
Adj WW: 618	
Adj YW: 1138	

CE 4.8	BW 4.1	WW 72.4	YW 107.6	Milk 21.5	MCE 1
--------	--------	---------	----------	-----------	-------



LOT 42



Sister to Lot 42

- Hock is an impressive bull with that desired baldie face and muscle pattern.
- His sire walked our pastures for several years and left us an attractive set of daughters with great udders.
- His maternal sister sold to McIntosh Livestock last fall.

CITYVIEW SNIP 103H

43

CA-BPG1311404 / Black / Homozygous Polled / Purebred

ERIXON WHY NOT 111B
TLSS DJIMON 64D
 CHUB'S FLIRT 6P
 LFE THE RIDDLER 323B
KWA MS RIDDLER 126D
 MISS KBR BLACK LADY 943W

Feb 8/20	CVBB 103H
Act BW: 91	
Adj WW: 687	
Adj YW: 1282	

CE 5.4	BW 4	WW 78.3	YW 120.3	Milk 24	MCE 3.8
--------	------	---------	----------	---------	---------



LOT 43



Sister to Lot 43

- Snip 103H has been a pasture favourite all summer with his small white marking, moderate frame and good foot.
- He is not extreme in anyway and balances many of traits we value most.
- His mother is a Riddler daughter from the Ashworth program. A maternal sister sold to Beechinor Brothers Simmentals.



LOT 44

CITYVIEW HIPMYSTER 93H

44

CA-PG1311394 / Red / Homozygous Polled / Purebred

WINCHESTER HR P8315
CITY VIEW ENVISION 54E
 BLI CRANBERRY 508C
 OAKVIEW DOMINATOR 133D
CITY VIEW SO SEDUCTIVE 105F
 SUN STAR SO SEDUCTIVE 14D

Jan 30/20	CVBB 93H
Act BW: 98	
Adj WW: 726	
Adj YW: 1240	

CE 10.2	BW 5.1	WW 84.2	YW 117.8	Milk 29.2	MCE 6.8
---------	--------	---------	----------	-----------	---------



Sire of Lot 44

- A homo polled son of the Envision bull who we've been using to run clean up on heifers.
- This pedigree is outcross to any other in our offering. Growth, maternal and calving ease.
- 93H ranks above average for 11 of 13 traits measured by Canadian Simmental.



LOT 45

CITYVIEW HUNTLEY 68H

45

CA-BPRS1311367 / Homozygous Black / Homozygous Polled / 7/8

HOOK'S YELLOWSTONE 97Y
LRS ELEVATE 213B
 LRS MS DUAL FOCUS 213Z
 SVF ALLEGIANCE Y802
CITY VIEW RIGHT ON 21F
 CITY VIEW 12X RIGHT 408B

Jan 23/20	CVBB 68H
Act BW: 87	
Adj WW: 692	
Adj YW: 1198	

CE 14.8	BW 0	WW 78.8	YW 112.9	Milk 26.2	MCE 8.8
---------	------	---------	----------	-----------	---------



Left: Sire of Lot 45
 Right: Granddam of Lot 45

- Huntley is the only son of Elevate who has worked well for us on heifers.
- A great choice for the heifer pen. He's in the top 2% for calving ease and 4% for birthweight.
- Homo polled and black and goes back to the Xtravagance 12X cow, the dam of lot 25



What Do The Numbers Mean?

Calving Ease (CE) - The ease with which a bull's calves are born to first calf heifers. The larger EPD indicates a higher percentage of unassisted births for calves sired by that bull.

Birth Weight (BW) - Calf weight at birth adjusted to the dam's age. The larger EPD indicates a heavier average birth weight.

Weaning Weight (WW) - Weight taken between 160 and 250 days of age and adjusted to 205 days of age and to the dam's age. The larger EPD indicates a heavier average weaning weight for calves sired by that bull.

Yearling Weight (YW) - Weight taken between 330 and 440 days of age and adjusted to 365 days of age and to the dam's age. The larger EPD indicates a heavier average yearling weight for calves sired by that bull.

Maternal Calving Ease (MCE) - The ease a bull's daughters calve as first calf heifers. The larger EPD indicates a higher percentage of unassisted births for calves born to the sire's daughters.

Milk - The milk EPD is a predictor of a sire's genetic merit for milk as expressed in his daughters production, or in other words, the part of weaning weight attributed to milk genes. The larger EPD indicates heavier average weaning weights due to daughter's greater maternal ability.

Total Maternal (TM) - A bull's ability to pass on milk production and growth rate through his daughters. It predicts the total weaning (direct and maternal) that will be displayed in his daughter's offspring. It is calculated by adding half of the Weaning Weight EPD with the Milk EPD. The larger EPD indicates higher pounds at weaning.

2020 Simmental Breed Averages - CE 6.7 BW 3.4 WW 69.5 YW 102.4 Milk 25.2 MCE 3.9

2020 Angus Breed Averages - BW 3.5 WW 48 YW 86 Milk 22 CE 3.5 MCE 7

Win a \$2000 Sale Credit

Purchase a bull from any current Saskatchewan Simmental member and when the registration papers are transferred, you are entered to win a \$2000 sale credit! The draw will be made at the SSA Annual general meeting in July and the lucky winner will have one year to use the credit at public auction or private sale on bulls or females from any current Saskatchewan member.

Thank You! To our 2020 Buyers

Neil and Tammy Rumpel Ken Loos	Morhart Farms Ltd. Mark Ferrara Brad Fellner	Hillcrest Trucking Knox Land and Cattle Inc. High Rise Farms Ltd.
Kevin Jordison and Lacey McNutt Rafter C Ranch Ltd. Peardon Ranch Cypress Farms Ltd.	Hazeldean Farm Ltd. Jacob Carrobourg and Janelle Berg Jerrod Sholar	Springwater Ranch Ltd. Excel Grazing Corp. Wendell and Beryl Campbell
Coulee Crossing Cattle Co. Messner Farm Partnership	Twin View Livestock Brian Arguin KG McLaren Farms Bar Double M Angus Rick and Bonnie Clubbe Shiloh Cattle Co. Scott Sigfusson LF Johnstone Farm Ltd. Darrell and Steven Glovich	Trevor Benson and Bonnie Brandt Ken Nagel KZ Simmentals Sunny Valley Simmentals Beechinor Bros. Simmentals McIntosh Livestock Ivanhoe Angus Storebo Farms Randy Stevens T & P Anthony Farms

City View Simmentals
Box 1494
Moose Jaw, SK
S6H 7A8



CITY VIEW SIMMENTALS & ABOUND LIVESTOCK
11th Annual Bull Sale
