

CITY VIEW SIMMENTALS & IVANHOE ANGELS  
WITH SUNNYSIDE SEMMENTALS & ANGELS BREWSTER

# 9TH ANNUAL BULL SALE

— TUESDAY, MARCH 19, 2019  
JOHNSTONE AUCTION  
MOOSE JAW, SK



Welcome to our 9th Annual Sale! We've been selling bulls for almost 20 years and have learned a lot but one thing has remained the same; our commitment to producing cattle that are right for the times. We work hard to not chase the latest trends or fads offered by the purebred

industry. A few key beliefs we operate with on a daily basis are the value of time tested genetics and the foundation of our mother cows. Time and time again, this industry has proven that consistency is key. We are very proud of the consistency bulls purchased through our offering have provided to their new owners.

One of things that makes this sale work so well is the shared vision of our fellow consignors. You won't find better people to work with than Ron & Marilyn at Ivanhoe Angus and Tom & Sharon at Sunnyside Simmentals. Brian & Lisa continue to build a great cowherd at Abound Livestock and we have no doubt you will see steady improvement in their Angus bulls.



Top quality groups of replacement heifers from Rick & Bonnie Clubbe and the Abound program will also be available. These females are outstanding and we strongly believe they'd be a great addition to any program.

As always, we feed bulls with longevity in mind on a high forage diet and present them to you in their working gear. The hope is they remain able to develop and grow in the coming years. After weaning, our bulls have as much space to roam as you'll find in the purebred industry. This helps keep the bulls athletic and sound for breeding. They come to you ready to work rather than melt down.

In closing, we leave you with a thought we've shared many times. It says, 'The bulls you buy this year will give you their first calves in 2020. His first daughters will calve in 2022 and, if all goes well, you will continue to have calves from him until 2025 or longer. This means in 2035, your 10 year old cows could still be out of the bull you buy this year and many of your young and middle aged cows will be his descendants. Short term decisions do not exist in this business. Find the best bulls you can afford from a trusted, professional source who makes their living the same way you do.'



We hope to be that trusted, professional source for you and appreciate any opportunity to visit with you about your bull needs.

Our Facebook page will have updates and videos as we get closer to the sale. We look forward to seeing you at Johnstone's on March 19 at

11:30 for one of the best bull sale lunches in the country. We encourage you to get in touch beforehand if you have any questions or if you'd like to tour at the farm. The bulls will be at the mart starting March 17.

The Barnett Family

Blaine & Tina

306 691 3747 or 306 631 6618

Joe & Aaron 403 465 2805 or 403 485 5518

Brian & Lisa 306 631 7539

It is our pleasure to welcome everyone to the 9th Annual City View Simmentals & Ivanhoe Angus Bull Sale with Sunnyside Simmentals and Abound Livestock.

Nature sets the course for the livestock industry. This past spring and summer we truly saw and appreciated the value of our Angus cows. The spring calving season saw the strong mothering ability and the vigour of the Angus calves. The summer came with heat, water and grass problems and of course, the flies. In spite of all this, we were so pleased with the calves this fall that the cows brought home.



Our bulls are being developed on the same Masterfeeds ration. The three two-year old bulls were developed on pasture this summer. They will be semen tested before the sale. The yearling bulls will be vet inspected before the sale and can return to the farm where they will continue to be developed. The bulls will be semen tested and delivered in the spring.



Ivanhoe Angus has a new sire group this year, Young Dale Pan 149C. We are so pleased with this sire group. Young Dale Pan 149C stamps his bull calves with a great Angus presence. He has sired both a very strong group of bulls and females.

A sincere thank you to our customers. We appreciate your support and interest in our program. We would also like to thank all the people who are involved in the sale. We appreciate each and everyone who helps out. A special thank you to Bonnie for the wonderful sale day meal.



The bulls will be videoed on February 28 and those can be viewed at [livestockplus.ca](http://livestockplus.ca)

Please accept this as our invitation to join us on March 19 at Johnstone's. Plan to come early to view the cattle and join us for lunch.



Ron and Marilyn Moutenay

Ron & Marilyn

306 345 2560

Marilyn 306 631 4743

Ron 306 630 5871

# City View Simmentals and Ivanhoe Angus 9th Annual Bull Sale

with Sunnyside Simmentals & Abound Livestock

**Tuesday, March 19, 2019 - 1:00 pm**

On Offer:  
23 Angus and 37 Simmental bulls  
with Open Replacement Heifers

**Johnstone Auction Mart**  
**4 miles west of Moose Jaw on #1 Highway**

**Monday - 5:00 pm View the bulls, enjoy refreshments and pizza**  
**Tuesday - Lunch at 11:30am sponsored by Prairie Plains Agro.**  
**Sale at 1:00 p.m.**

**Auctioneer:**

Scott Johnstone .....306 693 4715 (business)  
306 631 0767 (cell)

**Sale Staff:**

Nate Marin .....306 869 7130 (cell)  
Don Oberg .....780 678 6926 (cell)  
Bridget Andrews.....306 631 9254 (cell)  
Shane Castle.....306 741 7485 (cell)

**Sale Day Phones:**

Blaine Barnett - 306 631 6618  
Tina Barnett - 306 631 5183  
Joe Barnett - 403 465 2805  
Brian Barnett - 306 631 7539  
Aaron Birch - 403 485 5518

Ron Mountenay - 306 630 5871  
Marilyn Mountenay - 306 631 4743  
Richard Rieder - 306 478 7766  
Colin Toner - 306 951 7502  
Tom Turnbull - 306 527 6624



You can watch and bid online at  
[www.livestockplus.ca](http://www.livestockplus.ca)  
Call Bridget at 306 631 9254 to register or  
get more information.

**Insurance**

We strongly recommend insuring your purchases sale day. See Larry Toner of Stockman's Insurance at the sale. 306 834 7652

**Delivery and Trucking Options**

Option A: Bring your trailer sale day and we'll deduct \$100.00 per bull from the purchase price.

Option B: Bulls will be delivered free of charge up to 300 Km from Moose Jaw at the seller's convenience as soon as possible following the sale. Other destinations can be arranged between the buyer and seller.

Option C: (Angus) Bulls return home with seller free of charge. Arrangements with Ivanhoe Angus and Abound Livestock can be made once bulls are semen tested. Buyers choosing this option are encouraged to insure their purchase.

Option C: (Simmental) Bulls can return to the farm until Apr. 15, 2019. It is the buyer's responsibility to pick the bull up from seller's farm on or before Apr. 15/19. Buyers choosing this option must insure their purchase.

Give us a call if you have any questions regarding our trucking options.

**Terms and Conditions**

All cattle sell according to the terms and conditions set out by the Canadian Angus and Simmental Associations.

# ABOUND IVESTOCK

Brian Barnett & Lisa Martin  
306 631 7539



Welcome to our 2<sup>nd</sup> Annual Sale! To say the least, 2018 was a hell of a ride between dealing with weather and the amount of progress we worked toward here at Abound. Our yard and cattle are very important to us and came first to anything else all year. We managed to scratch up what we hope is enough feed through the drought conditions and spent countless hours yet again fixing and rebuilding our yard's infrastructure. We are excited about the group of bulls that we have on offer and feel they represent the hard work we put in each day. The bulls this year are the first group that was Abound born and bred!

As commercial producers ourselves, we know that pounds in the fall are what are going to make you money. With this in mind, we are trying to raise real beef bulls that are going to add muscle, shape and structure to your calves. The bulls are developed on a 14% pelleted ration from Co-op Feeds along with free choice grass hay and mineral to ensure longevity. Bulls will be vet inspected prior to the sale but will return back to Abound to be semen tested prior to delivery.

We thank you in advance for your interest in our bulls and we hope to see you sale day! If you would like to tour the bulls or cows beforehand, we welcome you to be our guest!

Brian & Lisa

Reference  
Sire

## BLACK RIDGE HARVESTOR 66D

DUM 66D ~ February 8, 2016



SAV HERITAGE 6295  
**SIRE: SAV HARVESTOR 0338**  
SAV EMBLYNETTE 7749

PEAK DOT PREDOMINANT 135S  
**Dam: BLACK RIDGE LEONA 22W**  
BLACK EIDGE LEONA 22S

Act BW 95      Adj WW 755      Adj YW 1320

BW 3.1   WW 51   YW 84   MK 18   TM 44   CE 3.0   MCE 7.0



**SAV HARVESTOR 0338**  
Sire of Harvester 66D

Black Ridge Harvester 66D is pure beef bull with incredible muscle shape. He is super correct structurally with a beautiful, big foot and is one of the most easy keeping bulls you will find! In the spring of 2017, we were lucky enough to visit the Moleski's before their sale for a tour and later made the trip to Yorkton to make sure "John" came home to work at Abound. His first calf crop exceeded our hopes! We have tremendous bulls and heifers from his mating and, to us, a bull that can leave you sound and attractive cattle in both the bull and heifer pens is very important!

1

## ABOUND HARVESTOR 817F

BARN 817F ~ March 5, 2018



**SIRE: BLACK RIDGE HARVESTOR 66D**

MERIT 8808  
**Dam: GLENDOR ELLA MINA 5A**  
GLENDOR ELLA MINA 32T

Act BW 87      Adj WW 725      Feb 12 Act. 1187

BW 2.5   WW 43   YW 74   MK 14   TM 36   CE 2.0   MCE 9.0



**MERIT 8808**  
Grandsire of lot 1

817F has always been an eye catcher. The Harvester calves all have small neat clean heads with a ton of muscle pattern. His Merit 8808 mother is another no B.S kind of cow that never needs anything more than what is provided and gets the job done right! You'll appreciate his overall balance and smoothness when you see him.

**2**

**ABOUT HARVESTOR 818F**

BARN 818F ~ March 5, 2018

**SIRE: BLACK RIDGE HARVESTOR 66D**

BELL QUANTUM 26T

**Dam: GGA BLACK LUCY 1Z**

IVANHOE B BLACK LUCY 4T



Act BW 81    Adj WW 737    Feb 12 Act. 1183

**BW 1.2    WW 41    YW 67    MK 20    TM 41    CE 4.0    MCE 4.0**

If you need multiple bulls to run together and want consistency, you're looking at the right group of bulls. When we lined the Harvestor calves up at weaning, we couldn't help but admire how consistent they were. Without sounding like a broken record, you are going to get depth and thickness and overall well-balanced calves when you use a bull like 818F! He's impressive!

**3**

**ABOUT HARVESTOR 805F**

BARN 805F ~ February 12, 2018

**SIRE: BLACK RIDGE HARVESTOR 66D**

YOUNG DALE ZENKO 17Z

**Dam: IVANHOE HEROINE A 54B**

IVANHOE HEROINE A 2P



Act BW 98    Adj WW 750    Feb 12 Act. 1305

**BW 4.2    WW 53    YW 89    MK 18    TM 45    CE -2.0    MCE 3.0**



**IVANHOE HEROINE A 54B**  
Dam of lot 5

805F is following in his old man's foot steps. He reminds us so much of his sire that we call him Little John. If you like bulls that are super deep and soggy with length and disposition to boot then this is your bull! He is so strong in the top that you could feed an army on his back! Hair, muscle, foot, structure, and disposition are second to none with all these Harvestor sons. The Moleski's said it best when describing Harvestor 66D as a "dandy" and this bull here, ladies and gentlemen, well he is a "dandy" too!

**4**

**ABOUT HARVESTOR 816F**

BARN 816F ~ March 3, 2018

**SIRE: BLACK RIDGE HARVESTOR 66D**

ISLA BANK WIDESPREAD 67T

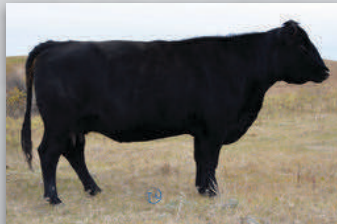
**Dam: IVANHOE WWF 64Z**

IVANHOE WWF 33M



Act BW 96    Adj WW 743    Feb 12 Act. 1238

**BW 3.2    WW 46    YW 79    MK 15    TM 38    CE -1.0    MCE 5.0**



**IVANHOE WWF 64Z**  
Dam of lot 8

If you want a complete package, this is your bull...super smooth, great moving and has the "look". His mother is a no-nonsense kind of cow that holds her condition very well and works very hard. He might just be Brian's pick of Harvestor 66D sons!

**5****ABOUT HARVESTOR 809F**

BARN 809F ~ February 14, 2018

**SIRE: BLACK RIDGE HARVESTOR 66D**

CRESCENT CREEK 07 EMBLAZON 62W

**Dam: IVANHOE BLACK LUCY 27B**

IVANHOE BLACK LUCY 11U

Act BW 89 Adj WW 668 Feb 12 Act. 1124

BW 2.2 WW 37 YW 62 MK 16 TM 35 CE 2.0 MCE 5.0

**IVANHOE BLACK LUCY 27B**  
Dam of lot 6

809F is a really neat, moderate framed bull that is built right. He is out of an excellent Emblazon daughter that earns her keep all year long. She raised a son a year ago that was our second high seller to Jacob Carroubourg. 809F will have many friends sale day.

**6****ABOUT HARVESTOR 810F**

BARN 810F ~ February 16, 2018

**SIRE: BLACK RIDGE HARVESTOR 66D**

SANDY BAR IDEAL 185W 216Y

**Dam: IVANHOE ROYAL PRIDE 52B**

IVANHOE ROYAL PRIDE 3Z

Act BW 89 Adj WW 771 Feb 12 Act. 1286

BW 1.8 WW 45 YW 75 MK 19 TM 42 CE 4.0 MCE 8.0

**ABOUT HARVESTOR 810F**  
with dam, early September

810F is a bull with a little more stretch compared to his brothers. However, he doesn't give up that shape and excellent foot quality that the Harvester sons demonstrate. Length of spine is the easiest way to add pounds but it's the hardest trait to breed in to cattle. We think this bull has some great things to offer!

We found this to be an interesting study of birth weight and calving ease and wanted to share it.

**Studies in Wyoming, Montana and Colorado came to the following conclusions:**

1. The birth weight itself influences calving ease by 65%.
2. The female has 60-70% influence on the birth weight of her calf.
3. The bull has 30-40% influence on the birth weight of his progeny.
4. Pelvic measurements and angle as well as the shape of the calf have 35-40% influence on calving ease.
5. Length of gestation greatly affects birth weight. A fetus can gain over one pound per day in the last days of gestation.
6. Weather and temperature during the last 30 days of pregnancy affect the length of gestation.
7. Size, maturity and body condition of the cow influence calving ease.

Most commercial producers do not weigh calves at birth. Guessing is as inaccurate as driving with a broken speedometer. What's thought to be 55 mph may actually be 65 or 70 mph. What is thought to be 70-80 lb. may actually be 80-90 lb.

Remember that everything is relevant. Increased growth, frame and performance will increase birth weight. A longer bodied calf will weigh more. If a calf is expected to have genetics for growth, it will display this prior to birth as well. As a rule of thumb, it takes a calf weighing 85 pounds at birth to finish at 1200-1250 pounds. A cow should easily give birth to a calf weighing 8% of her body weight. Therefore, a 1200 pound cow should give birth to a 96 lb. calf with ease.

Reference  
Sire

## MERIT MERGER 6061D

TJL 6061D ~ February 14, 2016



GDAR INSIGHT 7201  
**SIRE: MERIT 77X**  
MERIT SOCIALITE 5084

BAR-E-L IRON WILL 32Y  
**Dam: MERIT M'BROOK LASS 3074**  
MERIT M'BROOK LASS 9534

Act BW 83      Adj WW 763      Adj YW 1344

BW 5.1   WW 56   YW 102   MK 23   TM 51   CE -2.0   MCE 11



**MERIT 77X**  
Sire of Merger 6061D



**MERIT M'BROOK LASS 3074**  
Dam of Merger 6061D

Merit Merger 6061D was selected to build a female base in our herd. We saw the job a half brother did for Ivanhoe Angus and liked the results. If you raise your own replacement heifers then look no further than a 6061D son! His calves are long sided with a little bit of added stretch and have tremendous vigour and gain. We can't help but admire Merger as he gets out on the move. These cattle are made to cover ground and do it with a lot of pride!

**SIRE: MERIT MERGER 6061D**

YOUNG DALE TD 58R  
**Dam: BROOKE'S EDGE ROYAL 3X**  
BROOKE'S EDGE ROYAL 4T

Act BW 88      Adj WW 721      Feb 12 Act. 1267

BW 3.3   WW 49   YW 84   MK 19   TM 44   CE -1.0   MCE 6.0



**BROOKE'S EDGE ROYAL 3X**  
Dam of lot 1

The day 802F was born I am sure that I lost part of my extremities just like him! Of course, they do look better with a full set of ears but we think you will get passed that when you see this bull in person. He's as long as a freight train and moves like a cat! His mother is a tank whose son sold last year to the Toners at Fourth Spoke Ranch. The Merger heifer calves will all make your keeper pen! Just come take a look at ours. They are awesome!

**SIRE: MERIT MERGER 6061D**

MERIT 8808  
**Dam: GLENDOR LASSIE 23A**  
GLENDOR LASSIE 6U

Act BW 90      Adj WW 760      Feb 12 Act. 1301

BW 4.8   WW 51   YW 91   MK 22   TM 48   CE -4.0   MCE 7.0



**GLENDOR LASSIE 23A**  
Dam of lot 2

We knew quickly 804F's mother was going to become a cornerstone in our herd and she set out to prove her title again. For two years in a row she has brought home the highest weaning weight in fall. With a 90 lb birth weight and an actual 900 pound weaning weight, 804F is going to add you some pounds in the fall. These Merger sons are made to move. They have the frame, the foot, and have performed consistently well.

7

## ABOUT MERGER 802F

BARN 802F ~ February 2, 2018



8

## ABOUT MERGER 804F

BARN 804F ~ February 3, 2018



9

### ABOUND MERGER 825F

BARN 825F ~ March 23, 2018



**SIRE: MERIT MERGER 6061D**

HILOW TIGER 1X

**Dam: HILOW LASSIE 71A**

HAPPYVALE NP LASSIE 17K

Act BW 101 Adj WW 791 Feb 12 Act. 1208

BW 4.8 WW 51 YW 90 MK 25 TM 51 CE -4.0 MCE 4.0

It's hard to believe that 825F is a late March calf. If bull this age can wean off at 800 plus pounds in October, that is going to put money in your jeans every time and that is what these Merger genetics have the capability of doing. His dam is a tremendous female and we love what she is doing for our program. We retained a maternal sister of 825F in our herd and she expresses similar frame and depth as her mother. 825F has those true herd bull characteristics to him. He holds his head high with pride, shows a little spunk and has a big stride on a great foot. He would love nothing more than to be out with the ladies!

10

### ABOUND SOLUTION 806F

BARN 806F ~ February 2, 2018



MOGCK SURE SHOT

**SIRE: KG SOLUTION 0018**

KG RITO LADY 8724

R B TOUR OF DUTY 177

**Dam: HI LOW QUEEN MOTHER 16D**

HI LOW QUEEN MOTHER

Act BW 78 Adj WW 764 Feb 12 Act. 1247

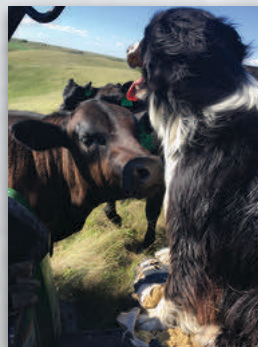
BW -0.1 WW 60 YW 107 MK 25 TM 55 CE 9.0 MCE 10



**KG SOLUTION 0018**  
Sire of lot 10

**HI LOW QUEEN MOTHER**  
16D

806F was an in dam purchase from HiLow Angus at the 2017 Frontline sale that turned out very well for us. Every year Lisa and Lexi always have a "pet" in the bull pen and KG is this year's favourite. Here at Abound even the pets have pets! All kidding aside, if you're looking for a calving ease specialist, Solution 806F is your man! His one of kind personality along with a smooth, complete look and a great set of EPD's make KG the perfect pick for your heifer pen!







# Ivanhoe Angus

The Mountenay Family

306 345 2560 or 306 630 5871

Videos and pictures of the Angus bulls will be available early March and can be viewed at [livestockplus.ca](http://livestockplus.ca)

Reference  
Sire

## SANDY BAR IDEAL 185W 216Y

IJP 216Y

February 12, 2011

SANDY BAR IDEAL 19S  
SIRE: SANDY BAR IDEAL 19S 185W  
SANDY BAR ANNIE K 62T

EARLEY GRID POWER 52P  
Dam: SANDY BAR NEONIA 54W  
SANDY BAR NEONIA 183P

Act BW 79      Adj WW 708      Adj YW 1217

BW 1.2   WW 41   YW 67   MK 20   TM 41   CE 4.0   MCE 4.0



Sandy Bar Ideal 185W 216Y has sired two yearling bulls for this year's sale. Like their sire these bulls have added stretch and a great foot. These yearling bulls have both their sire's breed character and great Angus character.

11

## IVANHOE IDEAL 12F

ASJ 12F ~ March 18, 2018

12

## IVANHOE IDEAL 24F

ASJ 24F ~ March 23, 2018



SIRE: SANDY BAR IDEAL 185W 216Y

CRESCENT CREEK IDEAL 28X  
Dam: HILLOW QUEEN MOTHER 43Z  
LODGE QUEEN MOTHER 92S

Act BW 95      Adj WW 695

BW 4.0   WW 42   YW 72   MK 20   TM 41   CE -3.0   MCE 5.0



SIRE: SANDY BAR IDEAL 185W 216Y

SILVER DOME DYNASTY 19T  
Dam: CRESCENT CREEK ROSEBUD 70X  
CRESCENT CREEK ROSEBUD 19T

Act BW 95      Adj WW 833

BW 4.1   WW 55   YW 86   MK 24   TM 52   CE -3.0   MCE 3.0

Reference  
Sire

# CRESCENT CREEK RITO 139C

WOS 139C

February 24, 2015

SINCLAIR ENTREPRENEUR 8R101  
**SIRE: MC CUMBER 8R101 RITO 1136**  
MISS WIX 7176 OF MC CUMBER

CRESCENT CREEK SCOTCHMAN 46W  
**Dam: CRESCENT CREEK LADY BATE 62Z**  
CRESCENT CREEK LADY BATE 6N

Act BW 98      Adj WW 812      Adj YW 1396

**BW 1.2   WW 41   YW 67   MK 20   TM 41   CE 4.0   MCE 4.0**



Crecent Creek Rito 139C has sired three yearling bulls for this year's sale. The Rito sire group have added size and scale. Crecent Creek Rito 139C has a ton of middle and correct leg with a great foot.

# 13

## IVANHOE RITO 9F

ASJ 9F ~ March 17, 2018

**SIRE: CRESCENT CREEK RITO 139C**

SANDY BAR INNOVATOR 46R  
**Dam: IVANHOE BLACK LUCY 22Y**  
IVANHOE BLACK LUCY 28N

Act BW 94      Adj WW 657

**BW 5.2   WW 38   YW 72   MK 14   TM 33   CE -9.0   MCE -4.0**

# 14

## IVANHOE RITO 58F

ASJ 58F ~ April 4, 2018

**SIRE: CRESCENT CREEK RITO 139C**

SANDY BAR INNOVATOR 46R  
**Dam: BROOKE'S EDGE S HEROINE 5Z**  
IVANHOE S HEROINE 3N

Act BW 95      Adj WW 721

**BW 5.8   WW 45   YW 80   MK 18   TM 40   CE -11   MCE -7.0**

# 15

## IVANHOE RITO 26F

ASJ 26F ~ March 24, 2018

**SIRE: CRESCENT CREEK RITO 139C**

SANDY BAR IDEAL 185W 216Y  
**Dam: IVANHOE EDGE PRIDE 4A**  
IVANHOE EDGE PRIDE 46Y

Act BW 90      Adj WW 725

**BW 4.5   WW 48   YW 84   MK 20   TM 44   CE -5.0   MCE -1.0**



2018 Angus Average EPD's

**BW 2.2   WW 45   YW 79   MK 21   TM 44   CE 3.2   MCE 7.0**

Reference  
Sire

## YOUNG DALE PAN 149C

YDF 149C      March 5, 2015

YOUNG DALE PANARAMA 66T  
**SIRE: YOUNG DALE PAN 96Z**  
YOUNG DALE JESTRESS 70P

GEIS BLACKMAN 88'08  
**Dam: GEIS GEORGINA 314'11**  
GEIS GEORGINA 984'09

Act BW 80      Adj WW 704

BW 1.2   WW 42   YW 72   MK 18   TM 39   CE 2.0   MCE 10.0



Young Dale Pan 149C has sired three yearling bulls for this year's sale. This sire group is new to the Ivanhoe sale program. Young Dale Pan 149C has sired bulls with strength, depth and a great rib shape. This sire group has a tremendous amount of eye appeal. Young Dale Pan 149C has a great presence and disposition.

# 16

## IVANHOE PAN 5F

ASJ 5F ~ March 13, 2018

# 17

## IVANHOE PAN 14F

ASJ 14F ~ March 19, 2018



**SIRE: YOUNG DALE PAN 149C**

**SIRE: YOUNG DALE PAN 149C**

WILMO SOLUTION 9Y  
**Dam: WILMO BLACK LUCY 8A**  
IVANHOE BLACK LUCY 34T

MERIT 2102  
**Dam: IVANHOE LINDA 53C**  
IVANHOE LINDA 31X

Act BW 95      Adj WW 721

Act BW 75      Adj WW 688

BW -0.2   WW 38   YW 65   MK 22   TM 41   CE 6.0   MCE 10

BW 1.2   WW 38   YW 65   MK 20   TM 39   CE 3.0   MCE 9.0

# 18

## IVANHOE PAN 48F

ASJ 48F ~ March 31, 2018

**SIRE: YOUNG DALE PAN 149C**

SANDY BAR AMBUSH 10Y 29A  
**Dam: IVANHOE BLACK LUCY 21C**  
IVANHOE BLACK LUCY 32Z

Act BW 89      Adj WW 683

BW 2.5   WW 39   YW 68   MK 19   TM 39   CE -1.0   MCE 0.0



Reference  
Sire

## SANDY BAR AMBUSH 10Y 29A

IJP 29A

February 21, 2013



DBRL AMBUSH 03M  
**SIRE: SANDY BAR AMBUSH 10Y**  
CFS LADY 8U

VDAR NEW TREND 315  
**Dam: MCS LARK 9N**  
HOLLBROOK MISS LARK 27G

Act BW 81      Adj WW 712      Adj YW 1198

BW 1.3   WW 29   YW 52   MK 22   TM 37   CE 5.0   MCE 2.0

Sandy Bar Ambush 10Y 29A has sired two yearling bulls for this year's sale. Sandy Bar Ambush sires bulls and females that are strong topped, long sided with great muscle shape. Sandy Bar Ambush 10Y 29A sires calves that are born extremely easy but grow afterwards.

# 19

## IVANHOE AMBUSH 49F

ASJ 49F ~ March 31, 2018



**SIRE: SANDY BAR AMBUSH 10Y 29A**

YOUNG DALE T D 58R  
**Dam: IVANHOE LINDA 23W**  
IVANHOE T LINDA 15J

Act BW 94      Adj WW 739

BW 2.7   WW 39   YW 64   MK 21   TM 41   CE -1.0   MCE -1.0

# 20

## IVANHOE AMBUSH 17F

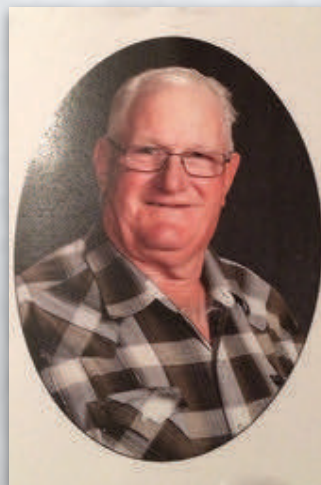
ASJ 17F ~ March 20, 2018

**SIRE: SANDY BAR AMBUSH 10Y 29A**

ISLA BANK WIDESPREAD 67T  
**Dam: IVANHOE HEROINE A 39W**  
IVANHOE HEROINE A 17H

Act BW 80      Adj WW 652

BW 2.5   WW 39   YW 68   MK 19   TM 39   CE -1.0   MCE 0.0



*In fond memory of  
Glen Reider*

1936-2018

Glen was a wonderful Grandpa  
and a great 4-H supporter.



Reference  
Sire

## CRESCENT CREEK 07 EMBLAZON 62W

WOS 62W

February 3, 2009

BCC-JCL EMBLAZON 038-287  
**SIRE: CRESCENT CREEK EMBLAZON 07T**  
CRESCENT CREEK ROSEBUD 10R

MINBURN MAIN EVENT 82R  
**Dam: CRESCENT CREEK ROSEBUD 150T**  
CRESCENT CREEK ROSEBUD 6R

Act BW 80      Adj WW 780      Adj YW 1192

BW 1.3   WW 29   YW 52   MK 22   TM 37   CE 5.0   MCE 2.0



Ivanhoe Angus is so pleased to consign three two-year old sons of Crescent Creek 07 Emblazon 62W. Like their sire, these bulls are smooth made, deep sided and have great ease of movement.

# 21

## IVANHOE EMBLAZON 29E

ASJ 29E ~ March 24, 2018

**SIRE: CRESCENT CREEK 07 EMBLAZON 62W**

YOUNG DALE T D 58R  
**Dam: IVANHOE DNA PRIDE 6W**  
TFA DNA PRIDE 145L

Act BW 94      Adj WW 646

BW 3.8   WW 33   YW 53   MK 13   TM 30   CE -6.0   MCE 0.0



IVANHOE EMBLAZON 41E  
Lot 22

# 22

## IVANHOE EMBLAZON 41E

ASJ 41E ~ March 30, 2018



**SIRE: CRESCENT CREEK 07 EMBLAZON 62W**

ISLA BANK WIDESPREAD 107N  
**Dam: IVANHOE LUCY 52T**  
IVANHOE LUCY 46M

Act BW 77      Adj WW 650

BW -0.2   WW 27   YW 44   MK 14   TM 28   CE 5.0   MCE 7.0

# 23

## BROOKE'S EDGE EMBLAZON 2E

BEBS 2E ~ April 25, 2017



**SIRE: CRESCENT CREEK 07 EMBLAZON 62W**

YOUNG DALE CHALLENGER 4K  
**Dam: IVANHOE ATALANTA 48N**  
TAF ATALANTA 126K

Act BW 87      Adj WW 719

BW 1.8   WW 33   YW 54   MK 13   TM 30   CE -1.0   MCE 4.0



# Sunnyside Simmentals

## The Turnbull Family

### 306 731 2703

Welcome to the 2019 Bull Sale! We would like to thank the Barnett and Mounenay families for again allowing us to be part of such a great event. The support, laughter and fun is much appreciated. Thanks also to Johnstone Auction Mart & staff. It is always a pleasure to work with such great people.

We strive to raise bulls that will give the commercial breeder the extra pounds in the fall and money in your pocket. Good bone structure and feet are required as our bulls walk the hills of the beautiful Qu'Appelle Valley. Our bulls have been fed at home on a high protein ration and hay until mid December when they went to City View to be cared for until sale time. Please call with any questions or contact City View to view the bulls prior to the sale.

A big thank you to all our past customers and friends. Your support is much appreciated. And welcome to new customers joining us for the first time. Don't forget to join us for lunch prior to the sale. I guarantee you have never been to a bull sale where you are fed as well as this one.

Tom & Sharon Turnbull and family

# 24

## TJT30F SUNNYSIDE 30F

TJT 30F ~ January 21, 2018 ~ Polled ~ Hetero Black



ERIXON DEALER 63Z  
**SIRE: ERIXON LAD 21C**  
 PORTERS 234T

RC CLUB KING 040R  
**Dam: JHSN CLUB QUEEN 30Y**  
 BDS MISS BLACK DIAMOND 30T

Act BW 98      Adj WW 873      Adj YW 1327

CE 8.1    BW 2.3    WW 77.1    YW 117    MK 19.2    MCE 2.8



**ERIXON LAD 21C**  
 Sire of lots 24 and 25

30F is a black bull with a moderate frame and the sought after white face. The dam of this bull is a solid black RC Club King daughter with tremendous milking ability. She is a big hipped powerful momma cow that has consistently raised a functional, quality calf with length, muscle and growth.

# 25

## TJT31F SUNNYSIDE 31F

TJT 31F ~ January 11, 2018 ~ Polled



**SIRE: ERIXON LAD 21C**

DOUBLE BAR D TANKER 161Y  
**Dam: SUNNYSIDE JEWEL 31B**  
 SUNNYSIDE HALEY 3Z

Act BW 105      Adj WW 855      Adj YW 1370

CE 8.1    BW 2.3    WW 77.1    YW 117    MK 19.2    MCE 2.8



**SUNNYSIDE HALEY 3Z**  
 Granddam of lot 39

31F is red, white faced bull that is wide topped and deep with a great hair coat. The dam of this bull, Sunnyside Jewel 31B, traces back to our Lazy Bar B Haley 3N cow family. The 3N cow had a tremendous impact on our herd. Given that our herd is small, we rely on consistent productive cow families and you will find traces of 3N in many of our cows. A full brother sold in last years sale to Delbert Schmidt.

Reference  
Sire

## CITY VIEW DAMASCUS 605D

CVJB 605D ~ January 2, 2016 ~ Homo Polled



KWA RED ROCK 5T  
**SIRE: KWA ROCK 36B**  
KWA MS WESTERN 34Z

HARVIE BOONDOCK 12Z  
**Dam: CITY VIEW 18T UNIQUE 428B**  
CITY VIEW TEAR JERKER 18T

Act BW 94      Adj WW 704      Adj YW 1175  
CE 11.6   BW 1.5   WW 64.1   YW 92.4   MK 32   MCE 5.1



**CITY VIEW TEAR JERKER 18T**  
Granddam of Damascus

When we purchased 605D from City View Simmentals, we were looking for a calving ease bull that would still sire productive calves with performance and growth and this bull has more than exceeded our expectation. 605D is sired by the \$21,000 KWA Rock 36B bull from Ashworth Farms. 605D calves are consistent in their design and vigorous at birth with a quiet disposition.

**SIRE: CITY VIEW DAMASCUS 605D**

LFE RED CASINO 3036X  
**Dam: ERIXON LADY 2C**  
ERIXON LADY 13A

Act BW 96      Adj WW 813      Adj YW 1344  
CE 10.3   BW 2.1   WW 63.5   YW 86.3   MK 23.5   MCE 5.4



**ERIXON LADY 2C**  
Dam of lot 38

2F is a red blazed face bull sired by City View Damascus 605D. This calf reminds us a lot of his sire when he was a yearling. We value a quiet disposition in our cattle and the 605D bull is one of the easiest animals to work with that we have ever had. Like his sire, 2F ranks well above breed average for calving ease. His dam is a solid red LFE Red Casino daughter we purchased from Erixon Simmentals. She is a young cow that has developed into a very sound tremendous female with great maternal ability. Her first calf sold through this sale last year to Jacob Carrobourg.

26

## TJT2F SUNNYSIDE 2F

TJT 2F ~ January 14, 2018 ~ Homo Polled



**SIRE: CITY VIEW DAMASCUS 605D**

CITY VIEW ASTEROID 333A  
**Dam: SUNNYSIDE ABBY 331D**  
SUNNYSIDE 33B

Act BW 95      Adj WW 870      Adj YW 1403  
CE 8.7   BW 2.6   WW 67.5   YW 99.6   MK 24.8   MCE 5.7



**CITY VIEW ASTEROID 333A**  
Grandsire of lot 27

If you like a bull with lots of length to add those extra pounds in the fall, then this is the bull for you. 331F has lots of length and width across the top. He is also sired by the City View Damascus 605D bull.

27

## TJT331F SUNNYSIDE 331F

TJT 331F ~ January 5, 2018 ~ Polled





# City View Simmentals

The Barnett Family

306 691 3747

**Reference  
Sire**

## BGS/BM CAPTAIN SCREAM 63D

CLNO 63D ~ January 27, 2016 ~ Homo Polled



HARVIE JDF WALLBANGER 111X  
**SIRE: SVS CAPTAIN MORGAN 11Z**  
SUNNYVALLEY BLK JENNA 88U

MR HOC BROKER  
**Dam: RF SCREAM 215Z**  
RF SCREAM 39X

Act BW 106      Adj WW 948      Adj YW 1500

CE 1.4    BW 6.7    WW 94.4    YW 140.5    MK 14    MCE 1.4



**RF SCREAM 215Z**  
Dam of Captain Scream



**CITY VIEW MOSIE 6F**  
Daughter of Captain Scream

The Simmental breed moves quickly and new bulls come and go often but if a bull in recent times has set the industry on fire and united us, it would be Captain Scream. We first saw him in Lloydminster as a calf when the Noble family campaigned him. Although we already had the Broker influence in our herd, we knew he was one we could not pass up and are proud to be among the original group of breeders to purchase a semen pack. His show results may never be matched again as he became a 5 time qualifier for the Beef Supreme Challenge. His untimely passing has made his genetics a hot commodity with semen trading for upwards of \$500 a dose. His calves are exciting to say the least. These sons along with an elite group of daughters certainly make us very glad we made the initial investment on Captain Scream. We campaigned a daughter last fall who was a class winner at the National show and then sold to the great people at Bert's NR in Manitoba. Take a close look at this sire group ~ they are outstanding!

**28**

## CITY VIEW THE FLASH 3F

CVBB 3F ~ January 2, 2018 ~ Homo Polled ~ Twin



**SIRE: BGS/BM CAPTAIN SCREAM 63D**

WHEATLAND BULL 680S  
**Dam: CITY VIEW WHIRLWIND 21W**  
3D MISS RIGHT ON 131T

Act BW 81      Adj WW 849      Adj YW 1375

CE 2.8    BW 5.8    WW 83.1    YW 124    MK 18.9    MCE 1.8



**CITY VIEW WHIRLWIND 21W**  
Dam of lot 28

The Flash is a very exciting individual who was a part of our show string last fall where he was widely admired as one of the biggest hipped bulls in the barn! No matter where he went, people would stop in their tracks as they past by to admire his expansive muscle shape and massive top. His dam is the definition of production. She is big bodied, beautifully footed and heavy milking. The Flash is the seventh son from 21W to sell through this sale. Others have worked for Al Shooter, Cam & Colleen Campbell, Matthew Stevens, Robert Peteck, and the Yuke Family. We have no doubt The Flash will be a changer for his new owner, passing all his desirable traits to his offspring.



**29****CITY VIEW FORTITUDE 43F**

CVBB 43F ~ January 13, 2018 ~ Polled

**SIRE: BGS/BM CAPTAIN SCREAM 63D**

ERIXON JETRUN 62Y

**Dam: CITY VIEW 45Z MOSIE 436B**

CITY VIEW 29T MOSIE 45Z

Act BW 104      Adj WW 819      Adj YW 1326

CE 2.2    BW 5.8    WW 89.9    YW 132.8    MK 19.7    MCE 0.3

**CITY VIEW 45Z MOSIE 436B**  
Dam of lot 29

Fortitude is another member of our 2018 show team. He represents many of the traits we strive for in our program; hair, hip, performance and function. His young Jet Run mother is liver red and milks from an ideally designed udder. Fortitude is extremely high performing and early maturing. From an early age, he displayed great muscle shape deep into his quarter. He ranks in the top 3% of the breed for weaning and yearling EPD's. Fortitude is sure to sire high quality sons and daughters alike!

**30****CITY VIEW FERRIS 36F**

CVJB 36F ~ January 11, 2018 ~ Homo Polled

**SIRE: BGS/BM CAPTAIN SCREAM 63D**

KNK/CRSR RED BULL 53T

**Dam: CITY VIEW MISS UNION 571C**

CITY VIEW MISS UNION

Act BW 99      Adj WW 728      Adj YW 1174

CE -0.2    BW 6.5    WW 83.5    YW 121.8    MK 17    MCE -0.1

**KNK/CRSR RED BULL 53T**  
Grandsire of Lots 30 and 31

Ferris is a homo polled son of Captain Scream who goes back to our great 817B cow family. He's another bull who ranks at the top of the breed for weaning and yearling EPD values. His dam is an embryo daughter of the great old Miss Union cow and Red Bull. Performance is definitely bred into Ferris and he is sure to pass that on!

**31****CITY VIEW FRONTIER 65F**

CVBB 65F ~ January 21, 2018 ~ Homo Polled



MR ISHEE UNIQUE 634

**SIRE: CITY VIEW UNBEATEN 46U**

CITY VIEW SPRING FLING 9S

KNK/CRSR RED BULL 53T

**Dam: CITY VIEW YOKO ONO 26Y**

CITY VIEW MS TESSA 12T

Act BW 107      Adj WW 754      Adj YW 1254

CE 2.0    BW 6.4    WW 79.8    YW 117.2    MK 19.6    MCE 2.3

**CITY VIEW YOKO ONO 26Y**  
Dam of lot 31**CITY VIEW UNBEATEN 46U**  
Sire of lot 31

Frontier is the only Unbeaten son in our offering this year. Unbeaten was Champion Bull our last year in Regina selling to Les & Linda Johnston. Frontier's pedigree combines two maternal cow families with Boss Lady and Kora. He ranks as one of the most sure fire female makers in the sale with a pedigree like this. A maternal brother sold to Lloyd & Sylvia Fox. Moderate framed, dark red and lots of presence here!

**Reference  
Sire**

**CDI HOMETOWN 246A**

FGN 246A ~ March 24, 2013 ~ 7/8 ~ Homo Polled



GW PREDESTINED 701  
**SIRE: GW REDESTINED 642X**  
GW MISS ORLANDO 453N

NF TRUMP S582  
**Dam: CDI MS TRUMP 86U**  
CDI MISS SHEAR FORCE 10N

Act BW 104      Adj WW 868      Adj YW 1634  
CE 4.3   BW 3.9   WW 93.9   YW 147.5   MK 22.8   MCE 1.8



**CDI MS TRUMP 86U**  
Dam of Hometown

We are always on the lookout for new breeding options to improve our own herd and to offer variety in bloodlines to our repeat buyers. Hometown is a bull out of the US with unbelievable performance data and liver red colour. We used him through AI with great results. They are great options for producers who sell by the pound.

**32**

**CITY VIEW FAME 26F**

CVBB 26F ~ January 8, 2018 ~ 7/8 ~ Polled ~ Twin



**SIRE: CDI HOMETOWN 246A**

JF/AJE RENDITION 738T  
**Dam: CITY VIEW BLK YUMA 12Y**  
3D MS BLK REFLECTION 132T

Act BW 78      Adj WW 748      Adj YW 1345  
CE 7.0   BW 2.7   WW 82.2   YW 125.2   MK 21.3   MCE 4.3



**CITY VIEW BLK YUMA 12Y**  
Dam of lot 32

Fame is quite a bull who is wider than a truck and massively big middled. He was born a twin to another bull calf resulting in the smaller birthweight. His dam is a big bodied, highly productive female who has sons working for Kress Livestock and Twin Curves Ranch. If you sell by the pound, Fame is the bull for you!

**33**

**CITY VIEW FALCON 32F**

CVBB 32F ~ January 10, 2018 ~ 7/8 ~ Homo Polled



**SIRE: CDI HOMETOWN 246A**

CMS UNIVERSE 838U  
**Dam: CITY VIEW MISS 33Y**  
CITY VIEW WENDY 29W

Act BW 100      Adj WW 711      Adj YW 1281  
CE 4.2   BW 4.3   WW 83.3   YW 124.6   MK 20.1   MCE 2.0



**CITY VIEW WENDY 33Y**  
Dam of lot 33

Falcon 32F will have many admirers by sale time. The maternal side of this pedigree has some our favourite cows over the years. His dam and granddam are carbon copies of each other and each has done a great job for us. We showed a maternal brother who was Reserve Supreme bull in Billings before selling to Twin Curves Ranch, another brother sold to Knox Land & Cattle and we have a maternal sister at home.

**34****CITY VIEW FIRST RATE 8F**

CVJB 8F ~ January 2, 2018 ~ 7/8 ~ Homo Polled

**SIRE: CDI HOMETOWN 246A**

ERIXON JETRUN 62Y

**Dam: CITY VIEW 16U BOSS LADY 453B**  
CITY VIEW XYLETIC 16X

Act BW 88      Adj WW 762      Adj YW 1184

CE 8.0    BW 1.9    WW 78.1    YW 109.5    MK 25.3    MCE 5.6

**CITY VIEW 16U BOSS LADY 453B**  
Dam of lot 34**CITY VIEW ENCORE 77E**  
Maternal brother to lot 33

First Rate is an extremely interesting package, a bull that we've watched very closely from a young age and displayed at Medicine Hat Pen Show. He is liver red, longer than a well rope and has an outstanding EPD profile. His dam is an absolute beauty who has done an exceptional job including one of last year's high sellers to Hicks Simmentals and another son to Trevor Benson & Bonnie Brandt. First Rate combines the raw power of Hometown and the calving and maternal strength of Jet Run.

**35****CITY VIEW FIRED UP 55F**

CVJB 55F ~ January 17, 2018 ~ 7/8 ~ Homo Polled

**SIRE: CDI HOMETOWN 246A**

MRC BROKER 6Z

**Dam: CITY VIEW BOSS LADY 514C**  
CITY VIEW UMA 16U

Act BW 92      Adj WW 602      Adj YW 1140

CE 5.0    BW 3.2    WW 74.6    YW 114.7    MK 24    MCE 2.1

**MRC BROKER 6Z**  
Grandsire of lot 35

Fired Up is another interesting power bull by Hometown who is really soft made and big middled. With Broker in the pedigree, performance is a sure bet! He is backed by a big volumed mother cow from the Boss Lady cow family.

**36****CITY VIEW FREEDOM 12F**

CVBB 12F ~ January 4, 2018 ~ Homo Polled

TOP FUEL U250 HR

**SIRE: CITY VIEW BREWHOUSE 410B**

CITY VIEW WEDGEWOOD 9W

MRL 91Y

**Dam: MORE'S MS AVA 309A**

MORE'S SPLISH SPLASH 610S

Act BW 99      Adj WW 607      Adj YW 1079

CE 8.8    BW 3.5    WW 59.5    YW 84.1    MK 32.1    MCE 9.1

**CITY VIEW BREWHOUSE 410B**  
Sire of lot 36**MORE'S MS AVA 309A**  
Dam of lot 36

Freedom is long bodied, clean sheathed and very sound. He is the only son of Brewhouse this year, a bull you may remember as he topped this sale at \$15,000 four years ago to Twin Curves Ranch. We can say it about many of the bulls but Freedom has a highly maternal pedigree sure to sire elite daughters! A maternal brother sold to David McKay and we have a sister at home.

**Reference  
Sire**

**BERTS DAKOTA 7D**

NRD 7D ~ January 7, 2016 ~ Homo Polled



HARVIE JDF WALLBANGER 111X  
**SIRE: ERIXON REVELSTOCK 41A**  
ERIXON LADY 10U

LFE BLACK LAKOTA 385W  
**Dam: SWAN LAKE NOREMAC 75Y**  
3D MISS RED NOREMAC 16M

Act BW 94	Adj WW 779	Adj YW 1355
CE 8.8	BW 3.3	WW 79.5
YW 130.2	MK 27.8	MCE 4.4



**SWAN LAKE NOREMAC 75Y**  
Dam of Dakota

This is the first group of sons to sell by Dakota. We purchased him from the folks at Berts NR Simmentals as a red power option without compromising maternal capability. His dam is a beautiful cow who left her mark in terms of overall dimension, volume, and depth from end to end. This first group of sons pattern quite similarly in terms of their muscle mass and shape. We are very excited for the future of this sire in our program!

**SIRE: BERTS DAKOTA 7D**

KNK/CRSR RED BULL 53T  
**Dam: CITY VIEW ET 6J UNIQUE 38Z**  
CITY VIEW MISS UNION

Act BW 106	Adj WW 676	Adj YW 1169
CE 1.5	BW 5.4	WW 74.3
YW 114.1	MK 20.5	MCE -0.4



**KNK/CRSR RED BULL 53T**  
Grandsire of Lot 37

Ferdinand is a very complete, well rounded bull who really covers all the bases. Many are going to have him marked very highly come sale time. We certainly appreciate the job Bert did in adding sheer mass to his offspring. Ferdinand combines the best character with his very correct and feminine mother cow with the beef bull value of Bert.

**SIRE: BERTS DAKOTA 7D**

CMS UNIVERSE 838U  
**Dam: CITY VIEW 24N MOSIE 3Z**  
CITY VIEW LUCKY YOU 24N

Act BW 99	Adj WW 716	Adj YW 1254
CE 7.9	BW 2.7	WW 75.9
YW 119.1	MK 25.4	MCE 4.0



**CITY VIEW 24N MOSIE 3Z**  
Dam of lot 38

Flame is a very impressive bull to analyze in the flesh. He is big bodied, soggy and has lots of bone under him right down to his black hoof. His dam is about as hardworking as you can make a mother cow. Maternal brothers sold to David McKay and the Blackwells in addition to two maternal sisters we have at home.

**37**

**CITY VIEW FERDINAND 68F**

CVJB 68F ~ January 22, 2018 ~ Polled



**38**

**CITY VIEW FLAME 80F**

CVBB 80F ~ January 25, 2018 ~ Polled



# 39

## CITY VIEW FLINT 72F

CVBB 72F ~ January 23, 2018 ~ Polled



**SIRE: BERTS DAKOTA 7D**

ERIXON RINGER 93Y

**Dam: PRAIRIE WIND MISS 10A**  
PRAIRIE WIND 81X

Act BW 106      Adj WW 672      Adj YW 1237  
CE 5.0    BW 4.3    WW 71.9    YW 114.6    MK 27.8    MCE 4.1



**CITY VIEW MISS 70E**  
Maternal Sister to lot 39

**PRAIRIE WIND MISS 10A**  
Dam of lot 39

Flint is an impressive beast who is really stout made and full of character. His dam was purchased from Prairie Wind Simmentals and has done a great job for us. She also produced the high selling female at Red & Black last fall to Ashworth Farm & Ranch and another daughter we've kept for ourselves. He's an ideal candidate for a cross breeding program to add mass and growth our breed is known for.

# 40

## CITY VIEW FOXHOLE 79F

CVBB 79F ~ January 25, 2018 ~ Homo Polled



**SIRE: BERTS DAKOTA 7D**

MR ISHEE UNIQUE 634

**Dam: CITY VIEW WIFE YLANG YLANG 34Y**  
CITY VIEW'S PRETTY GIRL 17R

Act BW 107      Adj WW 683      Adj YW 1264  
CE 4.6    BW 4.9    WW 73.5    YW 111.9    MK 25.5    MCE -0.3



**CITY VIEW YLANG YLANG 34Y**  
Dam of lot 40

Foxhole is a bull many will notice for his dark colour and smooth makeup. His dam is a beautiful Ishee female who has a daughter at Swan Lake Farms and is also the granddam of lot 51. Foxhole is a great choice if you're in the market for a well balanced herd sire to cover many bases.

# 41

## CITY VIEW FEARLESS 96F

CVBB 96F ~ February 3, 2018 ~ Homo Polled



**SIRE: BERTS DAKOTA 7D**

MR ISHEE UNIQUE 634

**Dam: CITY VIEW WIFE MATERIAL 1W**  
CITY VIEW'S PRINCESS 3M

Act BW 91      Adj WW 749      Adj YW 1274  
CE 8.2    BW 3.3    WW 74.5    YW 112.6    MK 27    MCE 4.1



**MR ISHEE UNIQUE 634**  
Grandsire of lot 40 & 41

Fearless is a deep bodied, long sided individual backed by the Kora cow family that comes up more and more often in pedigrees. They are absolutely workhorse females who never seem to miss. Fearless' maternal sister is our donor cow, 7Y, who you'll see a group of sons from next year. Soft middled and sound with a money strip, how can you go wrong?

Reference  
Sire

## KWA ROCK 36B

KWA 36B ~ January 15, 2014 ~ Homo Polled

DAY RED PEPPER DOC 984R  
Sire: **KWA RED ROCK 5T**  
KWA MS ROCK 7P

IPU RED WESTERN 49X  
Dam: **KWA MS WESTERN 34Z**  
KWA MS BARON 67X

Act BW 80      Adj WW 720      Adj YW 1230

CE 14   BW 0.5   WW 74   YW 113.9   MK 32.4   MCE 9.5



Rock has become a standby for us over the past several years. We get more calls each spring on Rock sons than any other bull. Our customers have appreciated the usefulness in his sons who offer breed leading calving ease without compromising growth. For the first time, you'll find the work of his daughters in our offering. They are further proving Rock's worth in our program. Rock is an extremely impressive mature bull who, at 5, is as sound and good footed as he was at a year.

42

## CITY VIEW FIZZ 109F

CVBB 109F ~ February 9, 2018 ~ Homo Polled

**SIRE: KWA ROCK 36B**

BMR EXPLORER  
Dam: **CITY VIEW 6Z ZELDA 423B**  
ACADEMY HILL ZELDA 6Z

Act BW 99      Adj WW 687      Adj YW 1290

CE 12.2   BW 0.5   WW 72.9   YW 113.9   MK 20.2   MCE 7.6



**CITY VIEW 6Z ZELDA 423B**  
Dam of lot 42



**ACADEMY HILL ZELDA 6Z**  
Granddam of lot 42

Fizz belongs to Brody and Addison who are a huge part of the farm. They're building quite a cowherd with Fizz's grandmother, 6Z, as the anchor. There's lots of calving ease in this pedigree. One of the things we love about the Rock cattle is the way they are designed. They aren't always tiny at birth but they are built with easy calving in mind with their smaller skull, smooth shoulder, and length of body.

43

## CITY VIEW FABIO 89F

CVBB 89F ~ January 30, 2018 ~ Polled

**SIRE: KWA ROCK 36B**

REMINGTON GENERALLEE 106T  
Dam: **CITY VIEW 3M KORA 414B**  
CITY VIEW'S PRINCESS 3M

Act BW 104      Adj WW 722      Adj YW 1260

CE 8.1   BW 3.5   WW 74.9   YW 111.4   MK 26.6   MCE 4.8



**CITY VIEW 3M KORA 414B**  
Dam of lot 43

Fabio is another Rock son, this time going back to the Kora cow family who continues to produce high quality bulls and females. His mother is a tremendously sound female with a great udder. You can expect Fabio to add length of spine and power to your calf crop without compromising calving ease. His sons will be great and you'll want to keep every daughter.

# 44

## CITY VIEW FIDGET 88F

CVBB 88F ~ January 29, 2018 ~ Homo Polled



**SIRE: KWA ROCK 36B**

DOUBLE BAR D TANKER 161Y

**Dam: CITY VIEW MISCHESTER 502C**

SUNNYSIDE BERETTA 64T

Act BW 90      Adj WW 654      Adj YW 1284

CE 11.6   BW 1.3   WW 68.8   YW 104.7   MK 24.8   MCE 8.5

As we always have, we use Rock to moderate birthweight on mature cows and he always does a great job in that department. Fidget is very typical of the Rock progeny is his overall length of body and smoothness from end to end. His mother traces back to the high performing cows from Tom & Sharon at Sunnyside. You could expect Fidget to darken colour, add stretch and style.

# 45

## CITY VIEW FIREBALL 60F

CVBB 60F ~ January 20, 2018 ~ Homo Polled



GW-CPL RED ALERT

**SIRE: ER RED DASH 649D**

ER MISS REDLINE 40B

MR ISHEE UNIQUE 634

**Dam: CITY VIEW XCELLENCE 18X**

CITY VIEW SAVVY LADY 22S

Act BW 105      Adj WW 700      Adj YW 1143

CE 1.4   BW 5.4   WW 63.6   YW 88.3   MK 21   MCE 1.2



**CITY VIEW XCELLENCE 18X**  
Dam of lot 45

Fireball is a real blast from the past! One of the first bulls we ever sold by public auction was a Red Dash son over 20 years ago at Regina Bull Sale. We dipped into the tank and used him on a farm favourite cow, 18X or Sally as she's better known, and Fireball is the result. We feel he's an ideal candidate for use on British based cows to add frame, stretch and, ultimately, big pounds come fall!

# 46

## CITY VIEW FESTUS 48F

CVBB 48F ~ January 15, 2018 ~ Homo Polled



WELSH'S WARSAW 312Z

**SIRE: HART STATE OF WAR 056C**

HART MISS 102A

KWA ROCK 36B

**Dam: CITY VIEW SUNNY 670D**

SUNNYSIDE 141B

Act BW 87      Adj WW 754      Adj YW 1250

CE 14.2   BW 0.6   WW 86.7   YW 134.7   MK 24.3   MCE 9.3



**CITY VIEW SUNNY 670D**  
Dam of lot 46



**HART STATE OF WAR 056C**  
Sire of lot 46

Festus is a different pedigree from State of War, a bull we used with great results on heifers. Festus is super hairy, mega stout and stylish and check out his EPD profile! We don't often picture cows until they're 3 or 4 but we wanted to show you a Rock daughter. Festus' dam is the type of female we strive to produce with her elite udder quality, maternal character and soundness. With calving ease on both sides of the pedigree and EPD's to match, we believe Festus is a candidate for the heifer pen.

Reference  
Sire

## TLSS DJIMON 64D

RYAN 64D ~ January 10, 2016 ~ Homo Polled



ERIXON DEALER 63Z  
**SIRE: ERIXON WHY NOT 111B**  
PORTERS 234T

TCF/RCC TEMPTATION GJ640  
**Dam: CHUB'S FLIRT 6P**  
REICH TINA 45M

Act BW 92	Adj WW 709	Adj YW 1373			
CE 2.9	BW 3.8	WW 72.8	YW 111.3	MK 13.9	MCE 1.2



**CHUB'S FLIRT 6P**  
Dam of Djimon

Our search for a highly maternal pedigree ended with Djimon, a strange name that actually means 'powerful blood'. Few cows can claim the title of WORLD CHAMPION but 64D's dam can! She was selected as champion female during the World Forum in Calgary in 2006. She was an absolutely stunning individual and we felt adding her influence was a great idea. Djimon's first calf crop is an indication of all he has to offer!

47

## CITY VIEW FOREIGN AFFAIR 30F

CVJB 30F ~ January 9, 2018 ~ Homo Polled



**SIRE: TLSS DJIMON 64D**

CMS UNIVERSE 838U  
**Dam: CITY VIEW 28U BOSSLADY 301A**  
CITY VIEW UMBER 28U

Act BW 95	Adj WW 649	Adj YW 1164			
CE 6.1	BW 2.5	WW 66.9	YW 98.7	MK 22	MCE 3.1



**CITY VIEW 28U BOSSLADY 301A**  
Dam of lot 47

Foreign Affair is a good haired, great tempered bull with large volume. His dam is a blood red, beautifully uddered female from the Boss Lady family. With Boss Lady and 64D in the pedigree, Foreign Affair ranks as a maternal powerhouse. You can count on his daughters being an absolute slam dunk!

48

## CITY VIEW FREE FOR ALL 23F

CVBB 23F ~ January 8, 2018 ~ Polled



**SIRE: TLSS DJIMON 64D**

CMS UNIVERSE 838U  
**Dam: CITY VIEW 29T MOSIE 45Z**  
CITY VIEW TRUDY 29T

Act BW 95	Adj WW 649	Adj YW 1164			
CE 5.7	BW 2.0	WW 66.7	YW 103.6	MK 22.2	MCE 2.3



**CMS UNIVERSE 838U**  
Grandsire of many lots

Free for All is a very solid, meaty bull and a 3/4 brother to lot 47 and 50. These bulls are very similar in many ways. We can't say enough good things about the many 838 daughters we have. They are perfectly uddered, good footed, ideal mother cows and Free For All's mother is no different. A pen of steers by Free For All would be sure to pay a lot of bills!



# 49

## CITY VIEW FANDANGO 52F

CVBB 52F ~ January 16, 2018 ~ Homo Polled



**SIRE:** TLSS DJIMON 64D

JF/AJE RENDITION 738T

**Dam:** CITY VIEW XTRAVAGANCE 12X  
3D MISS RIGHT ON 131T

Act BW 98      Adj WW 699      Adj YW 1225  
CE 6.5    BW 3.4    WW 71.7    YW 107.6    MK 21.2    MCE 5.3



**CITY VIEW MISS RIGHT 518C**  
Maternal Sister to lot 49



**CITY VIEW XTRAVAGANCE 12X**  
Dam of lot 49

Fandango is the natural calf out of donor cow, 12X. We have a couple embryo daughters at home who are absolute beauties and another maternal sister sold to Percyview Farms. Maternal brothers have sold to Matthew Hauberg, Shiloh Cattle Co, and Brian Arguin. Fandango is a very functional individual with chrome on the face, extra length of body and big quarter.

# 50

## CITY VIEW FINAL COUNTDOWN 67F

CVBB 67F ~ January 22, 2018 ~ Polled



**SIRE:** TLSS DJIMON 64D

CMS UNIVERSE 838U

**Dam:** CITY VIEW 100N SENSE 52Z  
CITY VIEW RED SENSATION

Act BW 92      Adj WW 623      Adj YW 1165  
CE 5.3    BW 2.6    WW 64.2    YW 98.9    MK 21.1    MCE 4.0

Final Countdown is dark, dark red and heavy haired. He's extremely well balanced from end to end and we really like his overall shape. Final Countdown is another Djimon x 838 combination making him another 3/4 brother to lots 47 and 48. A maternal brother sold to Hillcrest Charolais.

# 51

## CITY VIEW FOREST GUMP 91F

CVBB 116F ~ January 31, 2018 ~ Homo Polled

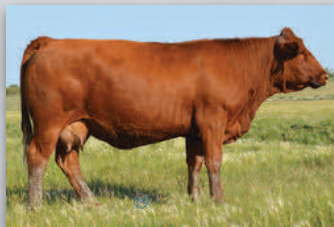


**SIRE:** TLSS DJIMON 64D

WINCHESTER HR P8315

**Dam:** CITY VIEW 34Y KORA 336A  
CITY VIEW YLANG YLANG 34Y

Act BW 97      Adj WW 659      Adj YW 1206  
CE 7.7    BW 3.0    WW 66.6    YW 99.2    MK 22.7    MCE 2.3



**CITY VIEW 34Y KORA 336A**  
Dam of lot 51



**CITY VIEW KORA 41E**  
Maternal Sister to lot 51

Forest Gump is a really cool guy! He's ultra hairy, really well muscled and stout made. We love our cows but we maybe love a few more than others and 336A is among the most loved. From the Kora family, she's a maternal sister to lot 40 and is always the first to greet the side by side in the pasture. She's also the dam of the second high selling red bred heifer we sold last fall to HarvieCrest and KT Ranches.

# 52

## CITY VIEW FLEETWOOD 116F

CVJB 116F ~ February 18, 2018 ~ Homo Polled



**SIRE:** TLSS DJIMON 64D

TOP FUEL U250 HR

**Dam:** CITY VIEW 16U BOSSLADY 309A

CITY VIEW UMA 16U

Act BW 104      Adj WW 797      Adj YW 1197

CE 6.2    BW 4.1    WW 70.8    YW 100.2    MK 22.7    MCE 4.8



**CITY VIEW BOSS LADY 610D**  
Maternal Sister to lot 52

Fleetwood is an exceptional, liver red individual backed by a Boss Lady cow. His maternal sister was very popular two years ago at Red & Black to Sun Star Simmentals and a maternal brother sold to the Chitwood Family. Fleetwood is very easy to like and we have no doubt he's going to mature into a very impressive mature bull with his big hip and ample muscle.

# 53

## CITY VIEW FORTUNE 39F

CVBB 39F ~ January 13, 2018 ~ Homo Polled ~ Homo Black



JS SURE BET 4T

**SIRE:** DRAKE POKER FACE 2X

DRAKE TULA 1R

MRL STERLING BLACK 138Z

**Dam:** TRI-R DESIREE 13D

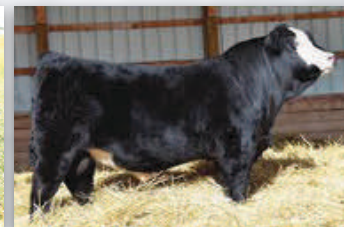
REHORST STUBBY ZANA 407B

Act BW 94      Adj WW 808      Adj YW 1323

CE 8.3    BW 1.8    WW 75.8    YW 118    MK 26.6    MCE 4.4



**MRL STERLING BLACK 138Z**  
Maternal Grand sire of lot 53



**DRAKE POKER FACE 2X**  
Sire of lot 53

Fortune was purchased in dam and she has certainly not disappointed. His sire is the widely used Poker Face who provided a great balance of calving ease and growth traits. Fortune is very long bodied and stylish and has a real herd bull character about him.



Reference  
Sire

### LRS ELEVATE 213B

FGN 213B ~ March 5, 2014 ~ 3/4 ~ Homo Polled



HOOKS TAURUS 24T  
**SIRE: HOOKS YELLOWSTONE 97Y**  
HOOKS SHEYENNE 77S

TNT DUAL FOCUS T249  
**Dam: LRS MS DUAL FOCUS 213Z**  
LRS MS DEW TIME 971W

Act BW 72      Adj WW 743      Adj YW 1491  
CE 14.9    BW -0.4    WW 75.8    YW 116.3    MK 17.7    MCE 9.5

Elevate is another bull we came across in efforts to continue broadening our gene pool. Coming out of the US, his pedigree was evaluated slightly different in Canada so he is considered a 3/4 blood making these sons 7/8. Elevate is a perfect option for breeding first calf heifers, His calves are small headed, smooth made with very moderate birth weights. They're also very stylish and the daughters in our replacement pen look very promising.

54

### CITY VIEW FEATURE 47F

CVJB 47F ~ January 15, 2018 ~ 7/8 ~ Homo Polled



**SIRE: LRS ELEVATE 213B**

MRC BROKER 6Z  
**Dam: CITY VIEW BOSS LADY 668D**  
CITY VIEW YAFFINGALE 8Y

Act BW 84      Adj WW 703      Adj YW 1229  
CE 8.0    BW 2.5    WW 74.8    YW 112.5    MK 22.6    MCE 4.4



**MRC BROKER 6Z**  
Grandsire of lot 54 and 55

Feature is out of a really attractive Broker two year old. She comes from the Boss Lady cow family and did a great job in her first effort. When you analyze Feature, you'll appreciate his balance of easy calving design and performance attributes. He is a 3/4 brother to lot 55 and the two of them would be ideal candidates to run together.

55

### CITY VIEW FLIGHT PLAN 57F

CVBB 57F ~ January 19, 2018 ~ 7/8 ~ Homo Polled



**SIRE: LRS ELEVATE 213B**

MRC BROKER 6Z  
**Dam: CITY VIEW RAVEN 629D**  
CITY VIEW 127T RAVEN 55Z

Act BW 83      Adj WW 725      Adj YW 1207  
CE 6.5    BW 1.0    WW 72.2    YW 109.9    MK 23.3    MCE 1.2



**CITY VIEW 127T RAVEN 55Z**  
Granddam of lot 55

Flight Plan is a 3/4 brother to lot 54 and is extremely similar. His two-year old Broker mother is a really promising young female. The Raven cows are among our most attractive and hard working females who we consistently rely on for high quality products. With just an 83 pound birthweight, we have no doubt Flight Plan will calve well without compromising performance. As an added bonus, he comes with a spot of chrome to add to your bottom line with added breed character.

Reference  
Sire

## ANCHOR D GUNNER 60Z

ZDS 60Z ~ December 24, 2012 ~ Fullblood ~ Polled



PROSTOCK HUGO 7052T  
**SIRE: FGAF BARBOSSA 707X**  
FGAF BARBELLA 839L

DOUBLE BAR D MAESTRO 100S  
**Dam: ANCHOR D JENNIFER 60X**  
PRL LOPEZ 147L

Act BW 85      Adj WW 819      Adj YW 1401

CE 11.8   BW 1.2   WW 80.7   YW 125   MK 34.9   MCE 12.9



**FGAF BARBOSSA 707X**  
Sire of Gunner 60Z

We've been working to rebuild the fullblood portion of our herd over the last number of years and were really excited to have a beautiful group of heifers to breed. That led us to Gunner who is proven heifer safe sire. We're really impressed with this sire group and are confident you will be too.

**SIRE: ANCHOR D GUNNER 60Z**

LRX ROCKET 51B  
**Dam: CITY VIEW TANESHA 648D**  
CITY VIEW 25X TANESHA 317A

Act BW 70      Adj WW 698      Adj YW 1221

CE 11.8   BW -1.1   WW 64.5   YW 100.2   MK 36.6   MCE 8.9



**LRX ROCKET 51B**  
Maternal Grandsire to lot 56

Fresco is a very exciting individual in many ways who's going to have a lot of admirers come sale time. He is DNA tested homozygous polled which is a very cool thing on the fullblood side. His dam is a Rocket daughter, a bull who did a great job for us. With just a 70 pound birthweight and perfect EPD's for calving ease, we'd sure be comfortable using him on heifers and cows alike. He comes from the same cow family as lots 59 and 60.

56

## CITY VIEW FRESCO 7F

CVJB 7F ~ January 2, 2018 ~ Fullblood ~ Homo Polled



57

## CITY VIEW FINE TUNE 44F

CVJB 44F ~ January 13, 2018 ~ Fullblood ~ Horned



**SIRE: ANCHOR D GUNNER 60Z**

DOUBLE BAR D SPITFIRE 20X  
**Dam: CITY VIEW TARA 510C**  
RIVERBEND OF TARA 33T

Act BW 93      Adj WW 663      Adj YW 1233

CE 8.9   BW 1.8   WW 63.6   YW 102.6   MK 33.6   MCE 8.5



**DOUBLE BAR D SPITFIRE 20X**  
Maternal Grandsire to lot 57

Fine Tune is as dark red as they come, really long bodied and combines calving ease and performance in a very useful package. He goes back to 33T, a cow that always did a really awesome job of producing a high quality product. Fine Tune's dam has a bright future and a beautiful udder. Her sire, Spitfire, was a widely used bull on the fullblood side of our breed for a number of years.

# 58

## CITY VIEW FULL FORCE 45F

CVBB 45F ~ January 13, 2018 ~ Fullblood ~ Polled



**SIRE: ANCHOR D GUNNER 60Z**

LRX ROCKET 51B  
**Dam: CITY VIEW ADDIE 636D**  
KINDRED SPIRIT ADDIE 55A

Act BW 91      Adj WW 708      Adj YW 1278

CE 10.2    BW 1.7    WW 67.4    YW 105    MK 37.6    MCE 9.3



**KINDRED SPIRIT ADDIE 55A**  
Maternal Granddam of lot 58

Full Force is a high performing, polled Fullblood bull we're very proud of. His granddam also produced our high selling fullblood bull last year to Trevor Benson & Bonnie Brandt. These fullblood bulls are great options for producers who breed British based cows to add chrome that has proven to pay big dividends at the auction.

# 59

## CITY VIEW FLAT OUT 66F

CVJB 66F ~ January 23, 2018 ~ Fullblood ~ Horned



**SIRE: ANCHOR D GUNNER 60Z**

SUNNY VALLEY SARGENT 24S  
**Dam: CITY VIEW WIFE TANESHA 508C**  
CITY VIEW 25X TANESHA 317A

Act BW 78      Adj WW 654      Adj YW 1104

CE 14.2    BW -1.2    WW 57.4    YW 80.9    MK 26    MCE 11



**SUNNY VALLEY SARGENT 24S**  
Maternal Grandsire of lot 59

Flat Out is a very complete Gunner son out of a Sargent cow. Take a look at the calving ease bred into this pedigree! A 14.2 CE, a negative BW and an actual birthweight of 78 pounds make Flat Out a home run for calving heifers. To further sweeten the deal, he is good haired, ideally pigmented and very attractive. He comes from the same cow family as lots 56 and 60.

# 60

## CITY VIEW FOOTLOOSE 62F

CVJB 62F ~ January 21, 2018 ~ Fullblood ~ Polled



ANCHOR T RUSTY 59G  
**SIRE: STARWEST POL BLUEPRINT**  
PHS HOMOZYGOUS EXCEPTIONAL

GIBBY'S ULTIMATE 29S  
**Dam: CITY VIEW XENOPUS 25X**  
VIRGINIA MS TANESHA 115T

Act BW 103      Adj WW 693      Adj YW 1219

CE 9.3    BW 4.5    WW 74.8    YW 106.1    MK 29.6    MCE 7.5



**STARWEST POL BLUEPRINT**  
Sire of lot 60

Footloose is a direct son of Blueprint, a bull whose name has become commonplace in Simmental circles. He comes from the same cow family as lots 56 and 59. This dark red, nicely marked power bull will create an exceptional pen of high performing, consistently marked, highly marketable steers.

# Commercial Replacement Heifers

Sourced from Simmental and Angus Genetics offered through this sale

**61**

15 Simmental heifers - sired by City View Simmentals bulls and out of straight bred Simmental and Simmental cross cows. These heifers will sell in groups of 3-5.

Rick & Bonnie Clubbe - Moose Jaw, Sk - 306 756 2211 or 306 690 6563



**62**

Pen of 3 straight Angus heifers from the heart of the replacement pen at Abound. They are sisters to the Angus bulls in the sale and sell only because of a very full replacement pen.

Abound Livestock - Moose Jaw, Sk - 306 631 7539



**63**

6 Angus Simmental cross heifers from Abound Livestock. They are out of straight bred Simmental cows in the Abound commercial program and Angus bulls.

Abound Livestock - Moose Jaw, Sk - 306 631 7539



**Join us for pizza Monday night at 5:00  
and lunch at 11:30 on Sale Day  
sponsored by Prairie Plains Agro.**

## *Thank you to our 2018 Buyers!*

Regina View Farms	Malcolm & Sandra Campbell	About Livestock	Hicks Simmentals
High Rise Farms Ltd	T L Farms Ltd	Bar KM Cattle Co.	Raymond & Darby Wild
Scott Sigfusson	Hillcrest Trucking	Morhart Farms Ltd.	Clinton Bjolverud
Cypress Farms	Knox Land & Livestock	Trevor Benson & Bonnie Brandt	Brian Arguin
Coteau Hills Land & Cattle	Rick & Bonnie Clubbe	Danny & Irene Hicks	Mark & Bobie Dean
Dave McKay	Ken Nagel	Jacob & Kiel Carrobourg	Wild Rose Farms
Fourth Spoke Ranch	Johnny Eberts	Rafter C Ranch Ltd.	Ken Loos
Roy & Pam Kirby	Richard & Kathy Rieder	Laurier Grazing Inc.	Allan Fahlman
Hazeldean Farm Ltd	Linthicum Ranch Ltd.	Yuke Family Farms	Castlerock Marketing
Sandy Bar Ranch Ltd.	Russell Dean Livestock	Allan Traversa Ag. Ltd.	Ashworth Farm & Ranch
Harvie Crest & KT Ranches	Bert's NR Simmentals	Rosehill Simmentals	

**Calving Ease (CE)** - The ease with which a bull's calves are born to first calf heifers. The larger EPD indicates a higher percentage of unassisted births for calves sired by that bull.

**Birth Weight (BW)** - Calf weight at birth adjusted to the dam's age. The larger EPD indicates a heavier average birth weight.

**Weaning Weight (WW)** - Weight taken between 160 and 250 days of age and adjusted to 205 days of age and to the dam's age. The larger EPD indicates a heavier average weaning weight for calves sired by that bull.

**Yearling Weight (YW)** - Weight taken between 330 and 440 days of age and adjusted to 365 days of age and to the dam's age. The larger EPD indicates a heavier average yearling weight for calves sired by that bull.

**Maternal Calving Ease (MCE)** - The ease a bull's daughters calve as first calf heifers. The larger EPD indicates a higher percentage of unassisted births for calves born to the sire's daughters.

**Milk** - The milk EPD is a predictor of a sire's genetic merit for milk as expressed in his daughters production, or in other words, the part of weaning weight attributed to milk genes. The larger EPD indicates heavier average weaning weights due to daughter's greater maternal ability.

**Total Maternal (TM)** - A bull's ability to pass on milk production and growth rate through his daughters. It predicts the total weaning (direct and maternal) that will be displayed in his daughter's offspring. It is calculated by adding half of the Weaning Weight EPD with the Milk EPD. The larger EPD indicates higher pounds at weaning.



