

Glen Gabel Angus
COMPLETE DISPERSAL

WITH ANGUS HARVEST CLASSIC GUESTS



OCTOBER 22, 2021

7:00 PM - JOHNSTONE AUCTION MART, MOOSE JAW, SK

Welcome to the Glen Gabel Complete Dispersal



"Just a Cow"

From time to time people tell me, "Lighten up, it's just a cow" or "That's a lot of money for 'just a cow'." Some of my proudest moments have come with "just a cow".

Many hours have passed and my only company was "just a cow", but I did not once feel slighted. Some of my saddest moments have been brought about by "just a cow" and in those days of darkness, the gentle touch of "just a cow" gave me the comfort and reason to overcome the day.

If you too think it's "just a cow", then you will probably understand phrases like "just a friend", "just a sunrise", "just a promise". Just a cow brings into my life the very essence of friendship, trust and pure unbridled joy. "Just a cow", brings out the compassion and patience that makes me a better person. Because of "just a cow", I will rise early, stay in the barn for hours and look longingly into the future. So for me, and folks like me, it's not "just a cow" but an embodiment of all the hopes and dreams of the future, the fond memories of the past and the pure enjoyment of the moment. "Just a cow" brings out what's good in me and diverts my thoughts away from myself and the worries of the day.

I hope that someday they can understand that it's not "just a cow", but the thing that gives me humanity and keeps me from being "just a human".

So next time you hear the phrase "just a cow", just smile... because they "just don't understand".

Glen Gabel



GLEN GABEL ANGUS

Glen Gabel
Box 3726, Regina, SK S4P 3N8
C: 306-536-1927 | glengabel@sasktel.net

Tattoo Index...

JLMB 130Z 20									
GGA 5A 25		CCCJ 1F 49		GGA 15H 23		GGA 24J 47A			
GGA 29A 1		GGA 2F 21		GGA 16H 24		GGA 25J 35A			
SANE 112A 35		GGA 3F 11		GGA 18H 12		GGA 26J 37A			
AFA 472A 9		GGA 13F 18		GGA 21H 26		GGA 27J 31A			
JLMB 154B 13		GGA 17F 16		GGA 24H 51					
		CCCJ 96F 47		GGA 27H 48					
GFA 11C 38		JSTN 163F 52		GGA 26H 46		MALES			
GGA 16C 3				GGA 28H 4		GGA 1J 32A			
		GGA 12G 7		JLMB 95H 41		GGA 2J 29A			
CCCC 1D 6		GGA 16G 37		SIXM 468H 43		GGA 4J 38A			
AHPC 13D 39		GGA 20G 19		BBC 527H 42		GGA 7J 22A			
ARY 614D 22		DMM 22G 33		JLMB 574H 28		GGA 10J 36A			
SIXM 618D 17		SIXM 482G 31				GGA 12J 10A			
		SIXM 651G 30		GGA 3J 8A		GGA 13J 6A			
GGA 1E 8		WJD 714G 29		GGA 5J 34A		GGA 14J 13A			
VOS 3E 36		PLS 910G 32		GGA 6J 1A		GGA 15J 18A			
GGA 13E 10				GGA 8J 33A		GGA 16J 21A			
GGA 23E 15		FLA 7H 44		GGA 9J 3A		GGA 17J 15A			
JLMB 105E 27		RAVE 10H 45		GGA 20J 25A		GGA 18J 39A			
AFA 389E 34		GGA 12H 40		GGA 21J 11A		GGA 19J 52A			
		GGA 13H 14		GGA 22J 30A		GGA 28J 16A			
		GGA 14H 2		GGA 23J 7A					
						JSTN 160H 53			

From The Desk At T Bar...

Welcome to the Glen Gabels Angus Complete Dispersal with Angus Harvest Classic Guests, October 22, 2021, at 7:00 P.M. at the Johnstone Auction Mart, Moose Jaw, Saskatchewan.

Health issues have forced the decision to disperse this highly productive herd. Although mobility was a factor, it has not dampened Glen's enthusiasm for the livestock industry and the great Angus breed. Over the past several years, Glen Gabel Angus has developed and grown into a herd of predictability. Glen is a motivator and the driving force for the Annual Angus Harvest Classic each fall and has again invited those members to offer their select female offering at his dispersal.

Although dispersals always offer a hint of sadness in the fact that the industry is losing a top breeder, dispersals are windows of opportunity to acquire the fruits of a cattleman's lifetime efforts and labor. Only in a dispersal, can one select from the heart of a breeding program whether it be a foundation female or her progeny as nothing is held back.

Only a few breeders can state that they are walking a Supreme Champion or an Agribition Champion in their pastures... DMM International 54D walks the Glen Gabels pastures and his service and progeny are a feature. The GGA A.I. program was highly successful despite the hot, dry conditions this past summer and the services of Final Answer, Resource, Renown, Rainfall, Insight, Deer Valley Growth Fund and Renovation will add value to your selections and purchases.

In building this herd, Glen keyed his program on volume and depth... but not overlooking, soundness, quiet disposition, fertility, and milk. You will find these females deep and broody, yet moderate in frame size and have exciting coupons at side. Ranchers, this is your last chance to acquire a GGA bull or two for the 2022 breeding season... repeat customers will tell you they work and add value to a breeding program. This is a young cow herd with endless opportunities... and well worth the trip!

Touring this fall, plan to visit the Angus Harvest Classic breeders as they are nearby and view their select offering of heifer calf prospects and bred heifers.

Feel free to stop by Glen Gabels Angus anytime prior the sale and preview the offering... or give Glen a call to discuss the herd and the selections that will fulfil your breeding needs... Glen loves talking Angus.

Plan to be with us in person, online or on the phone the evening of October 22nd for opportunity day in Moose Jaw. During these times, feel free to give any of the T Bar C Team a call and we will be pleased to assist you in a professional and confidential manner with your selections.

Chris Poley



CHRIS POLEY
306-220-5006



SHANE MICHELSON
403-363-9973



BEN WRIGHT
519-374-3335



Sale Management
T Bar C Cattle Co. Ltd.
Box 2330, Warman, SK S0K 4S0
Office: 306-933-4200 • Fax: 306-934-0744
info@tbarc.com • www.tbarc.com

Table of Contents...

TATTOO INDEX	IFC		
FROM THE DESK AT T BAR	1	ABOUND LIVESTOCK	44
SALE DAY INFO	2	TRIPLE H CATTLE CO.	45
GLEN GABEL DISPERSAL	3	EDWARDS ANGUS	46
SEMEN PACKAGES AND REFERENCE SIRES	35	TERMS	IBC
RAVENWORTH CATTLE	43		

GLEN GABEL COMPLETE ANGUS DISPERSAL

WITH GUESTS ANGUS HARVEST CLASSIC SALE

OCTOBER 22, 2021 | 7:00 PM | MOOSE JAW, SK

AUCTIONEER

Chris Poley, *T Bar C Cattle Co. Ltd.* 306-220-5006

SALE DAY PHONES

Shane Michelson, *T Bar C Cattle Co. Ltd.* 403-363-9973

Ben Wright, *T Bar C Cattle Co. Ltd.* 519-374-3335

Glen Gabel 306-536-1927

HOST HOTEL

Days Inn & Suites Moose Jaw 306-691-5777
1720 Main Street North, Moose Jaw, SK

TRUCKING

H.S. Knill Transport 877-442-3106
No cattle will be loaded out until the conclusion of the sale.

INSURANCE REPRESENTATIVE

Alameda Agencies
Bonnie Thompson 306-489-2258

ONLINE BROADCASTING



VIEW THE CATALOGUE ONLINE AT
WWW.BUYAGRO.COM

CATALOGUE CREATED BY:
TODAY'S PUBLISHING





1 GGA Blackberry 29A

Female GGA 29A 1718544 10/03/2013

EXAR MASTER 253	WK GUNSMOKE
JUSTAMERE 253 BADA BING 406S 1332684	B J BRIDE 909
REMITALL KEEPSAKE 143L	SITZ ALLIANCE 6595
	REMITALL KEEPSAKE 103J
BC 7022 RAVEN 7965	B C MARATHON 7022
JUSTAMERE 7965 BLACKBERRY 423U 1472967	O C C BLACKBIRD 796F
ERICA LASSIE OF RR 0751	GDAR SVF ROYCE 176G
	ERICA LASSIE OF RR 6451

BW	EPDS	CE	BW	WW	YW	MILK
82 lbs.		1.0	2.3	44	84	23

Two daughters sell – GGA Blackberry 14H as lot 2 and GGA Blackberry 16C as lot 3

A daughter, GGA Blackberry 8E by EXAR Declaration 1686B, was selected by Michael Koshel, Rocking K Angus, Oxdrift, Ontario

A son, GGA Legend 14G by DMM International 54D, was selected by Jacob Carrobourg, Coderre, Saskatchewan

A.I. bred to S A V Resource 1441 on April 17, 2021, then exposed to DMM International 54D from April 27 to August 17, 2021 Favorable to the A.I. date

1A GGA Blackberry 6J

Female GGA 6J 2209400 04/01/2021

S A V FINAL ANSWER 0035	SITZ TRAVELER 8180
S A V PIONEER 7301 1481377	S A V EMULOUS 8145
S A V BLACKBIRD 5297	BOYD NEW DAY 8005
	S A V BLACKBIRD 1082

BW	EPDS	CE	BW	WW	YW	MILK
91 lbs.		3.0	2.4	50	93	24



GLEN GABEL COMPLETE ANGUS DISPERSAL



2

GGA Blackberry 14H

Female GGA 14H 2143518 13/01/2020

D H D TRAVELER 6807
CONNELLY DATELINE 894782
 EILA EILA OF CONANGA

JUSTAMERE 253 BADA BING 406S
GGA BLACKBERRY 29A 1718544
 JUSTAMERE 7965 BLACKBERRY 423U

Q A S TRAVELER 23-4
 BEMINDFUL MAID D H D 0807
 SCOTCH CAP
 ELLA EILA OF CONANGA
 EXAR MASTER 253
 REMITALL KEEPSAKE 143L
 BC 7022 RAVEN 7965
 ERICA LASSIE OF RR 0751

BW	EPDS	CE	BW	WW	YW	MILK
82 lbs.		8.0	0.7	44	79	19

She ranks in the top 15% of the breed for calving ease and the top 20% for birth weight

Her mother, GGA Blackberry 29A, sells as lot 1

A.I. bred to S A V Final Answer 0035 on April 17, 2021, then exposed to Brooking Renovation 0160 from April 27 to July 28, 2021 Observed bred on May 9, 2021



GGA Legend 14G by DMM International 54D
 Selected by Jacob Carrobourg, Coderre, SK

GLEN GABEL COMPLETE ANGUS DISPERSAL



Her mother, GGA Blackberry 29A, sells as lot 1

Sons have been selected by Darrell & Shelley Morvik, Riverbend Farm, Conrad Schauenberg and Glen Berner

A.I. bred to PVF Insight 0129 on April 17, 2021, then exposed to DMM International 54D from April 27 to May 28, 2021, then exposed to GGA Maverick 8F from May 25 to June 26 Favorable to the A.I. date

3 GGA Blackberry 16C

Female GGA 16C 1835324 26/01/2015

S A V FINAL ANSWER 0035
JL ALL ANSWERS 1009 1610609
 ROYAL PERSEPHONE DRCC 8078U
 JUSTAMERE 253 BADA BING 406S
GGA BLACKBERRY 29A 1718544
 JUSTAMERE 7965 BLACKBERRY 423U

SITZ TRAVELER 8180
 S A V EMULOUS 8145
 LEACHMAN RIGHT TIME
 CANE RIDGE PERSEPHONE 6531F
 EXAR MASTER 253
 REMITALL KEEPSAKE 143L
 BC 7022 RAVEN 7965
 ERICA LASSIE OF RR 0751

BW	EPDS	CE	BW	WW	YW	MILK
78 lbs.		5.0	1.2	46	81	21

3A GGA Blackberry 9J

Female GGA 9J 2209403 04/01/2021

S A V BRILLIANCE 8077
PVF INSIGHT 0129 1703597
 PVF MISSIE 790

S A V BISMARCK 5682
 S A V BLACKCAP MAY 5270
 P V F NEW HORIZON 001
 P V F MISS RAPTOR 024

BW	EPDS	CE	BW	WW	YW	MILK
85 lbs.		5.0	1.5	53	94	23

She ranks in the top 5% of the breed for rib-eye



GLEN GABEL COMPLETE ANGUS DISPERSAL



4 **GGA Blackberry ET 28H**
 Female GGA 28H 2148420 01/03/2020

S A V BRILLIANCE 8077 S A V BISMARCK 5682
PVF INSIGHT 0129 1703597 S A V BLACKCAP MAY 5270
 PVF MISSIE 790 P V F NEW HORIZON 001
 P V F MISS RAPTOR 024
 B C MARATHON 7022
 BC 7022 RAVEN 7965 O C C BLACKBIRD 796F
JUSTAMERE 7965 BLACKBERRY 423U 1472967 GDAR SVF ROYCE 176G
 ERICA LASSIE OF RR 0751 ERICA LASSIE OF RR 6451

BW	EPDS	CE	BW	WW	YW	MILK
82 lbs.	4.5	2.0	49	89	21	

She ranks in the top 2% of the breed for rib-eye
 Her mother, Justamere 7965 Blackberry 423U, is a donor female and a dam to lot 1

A.I. bred to S A V Final Answer 0035 on April 17, 2021, then exposed to Brooking Renovation 0160 from April 27 to July 28, 2021 Favorable to the A.I. breeding

5 **FOUR (4) Embryos**
 PVF INSIGHT 0129 x JUSTAMERE 7965 BLACKBERRY 423U

S A V BRILLIANCE 8077 S A V BISMARCK 5682
PVF INSIGHT 0129 1703597 S A V BLACKCAP MAY 5270
 PVF MISSIE 790 P V F NEW HORIZON 001
 P V F MISS RAPTOR 024
 B C MARATHON 7022
 BC 7022 RAVEN 7965 O C C BLACKBIRD 796F
JUSTAMERE 7965 BLACKBERRY 423U 1472967 GDAR SVF ROYCE 176G
 ERICA LASSIE OF RR 0751 ERICA LASSIE OF RR 6451

PE	EPDS	CE	BW	WW	YW	MILK
	4.5	2.0	49	89	21	

Frozen embryos – full siblings to lot 4
 Stored at Bow Valley Genetics, Brooks, Alberta
 All associated costs are those of the purchaser



GLEN GABEL COMPLETE ANGUS DISPERSAL



She ranks in the top 8% of the breed for yearling weight and the top 15% for weaning weight

Her daughter, GGA Patricia 12G, sells as lot 7

Sons, GGA Ice Man 11F by PVF Insight 0129, was selected by Kyle and Brenda Abday and GGA Homeland 11H by S A V Final Answer 0035, was selected by Morhart Farms Ltd., Spring Valley, Saskatchewan

A.I. bred to S A V Final Answer 0035 on April 17, 2021, then exposed to DMM International 54D from April 27 to June 6, 2021 Favorable to the A.I. date

6 CURRAGHDALE Patricia 1D

Female CCCC 1D 1899935 01/01/2016

RITO 707 OF IDEAL 3407 7075
S A V RESOURCE 1441 1707295
 S A V BLACKCAP MAY 4136

S A V PROVIDENCE 6922
CURRAGHDALE PATRICIA 8Z 1696901
 CURRAGHDALE PATRICIA 34R

R R RITO 707
 IDEAL 3407 OF 1418 076
 S A V 8180 TRAVELER 004
 S A V MAY 2397
 S A V 004 PREDOMINANT 4438
 S A V MAY 7238
 MAR PRECISION PAVING THE WAY
 CURRAGHDALE PATRICIA 15K

BW	EPDS	CE	BW	WW	YW	MILK
		2.0	4.1	61	114	23

6A GGA Compass 13J

Male GGA 13J 2209406 09/01/2021

STEVENSON TURNING POINT
CONLEY SOUTH POINT 8362 2099027
 P R LADY 909 4200-587

PLATTEMERE WEIGH UP K360
 STEVENSON PRIDE I167X
 S A V NET WORTH 4200
 P R 587 205-537

BW	EPDS	CE	BW	WW	YW	MILK
84 lbs.		9.0	1.7	59	104	24



He ranks in the top 10% of the breed for calving ease and the top 15% for weaning and yearling weight

A performance son with calving ease by the North American National Champion, South Point

GLEN GABEL COMPLETE ANGUS DISPERSAL



7 **GGA Patricia 12G**
 Female GGA 12G 2094369 03/02/2019

S A V INTERNATIONAL 2020	S A V HARVESTOR 0338
DMM INTERNATIONAL 54D 1922656	S A V EMBLYNETTE 5483
DMM BLACKBIRD 105A	GUMBO GULCH CREED 94S
S A V RESOURCE 1441	SOUTHERN OX BLACKBIRD 12J
CURRAGHDALE PATRICIA 1D 1899935	RITO 707 OF IDEAL 3407 7075
CURRAGHDALE PATRICIA 8Z	S A V BLACKCAP MAY 4136
	S A V PROVIDENCE 6922
	CURRAGHDALE PATRICIA 34R

BW	EPDS	CE	BW	WW	YW	MILK
88 lbs.		-1.0	5.1	61	102	28

She ranks in the top 10% of the breed for milk, the top 15% for weaning weight and the top 20% for yearling weight

Her mother, Curraghdale Patricia 1D, sells as lot 6

A.I. bred to S A V Final Answer 0035 on April 17, 2021, then exposed to Brooking Renovation 0160 from April 27 to May 28, 2021, then exposed to GGA Maverick 8F from May 25 to June 26, 2021 – Observed bred on May 5, 2021

7A **GGA Patricia 23J**
 Female GGA 23J 2209418 23/01/2021

S A V BRAND NAME 9115	S A V BISMARCK 5682
CCCJ FREE STYLE 16B 1800857	S A V BLACKCAP MAY 5530
MVF BARANDA 50X	HF TIGER 5T
	MVF BARANDA 154U

BW	EPDS	CE	BW	WW	YW	MILK
74 lbs.		6.0	1.3	56	95	23

She ranks in the top 25% of the breed for weaning weight





8 GGA *Bardetta* 1E

Female GGA 1E 1975826 01/01/2017

SITZ TRAVELER 8180
S A V FINAL ANSWER 0035 1061938
 S A V EMULOUS 8145
 B C LOOKOUT 7024
PFLC BARDETTA 38C 1874898
 PRIME TIME'S 31H BARDETTA 549
 G D A R TRAVELER 71
 SITZ EVERELDA ENTENSE 1137
 BON VIEW BANDO 598
 S A V SKY EMULOUS 2124
 O C C LEGEND 616L
 GIBBET HILL MIGNONNE E37
 4DJ NUFF SAID 9N
 THOMASON BARDETTA 31H

BW	EPDS	CE	BW	WW	YW	MILK
70 lbs.		9.0	0.5	55	89	24

She ranks in the top 10% of the breed for calving ease and the top 15% for birth weight

A.I. bred to S A V Renown 3439 on April 17, 2021, then exposed to Brooking Renovation 0160 from April 27 to June 6, 2021 – Favorable to the A.I. date

8A GGA *Bardetta* 3J

Female GGA 3J 2210147 03/01/2021

HF KODIAK 5R
SOO LINE MOTIVE 9016 1504907
 TLA BEAUTY 5R
 SANDY BAR ADVANTAGE 43M
 WILBAR RUBY 955N
 RR 7407 RAINMAKER 2154
 TERRLENE BEAUTY 35F

BW	EPDS	CE	BW	WW	YW	MILK
81 lbs.		7.0	0.5	51	87	23

She ranks in the top 15% of the breed for birth weight and the top 25% for calving ease



GLEN GABEL COMPLETE ANGUS DISPERSAL



Lot
9

9 JUSTAMERE 1422B **Blackbird** 472A

Female AFA 472A 1762519 08/03/2013

DAMERON FIRST CLASS
EXAR CLASSEN 1422B 1702370
EXAR PRINCESS 2006

JUSTAMERE TIMELESS 234R
JUSTAMERE 234R BLACKBIRD 169X 1568505
EXAR BLACKBIRD 4083

EXG RS FIRST RATE S903 R3
DAMERON NORTHERN MISS 3114
EXAR LUTTON 1831
GREENS PRINCESS 1012
LEACHMAN RIGHT TIME
JUSTA SOURCE ANDEE 687X
SITZ ALLIANCE 8119
RR BLACKBIRD 1955

BW	EPDS	CE	BW	WW	YW	MILK
80 lbs.		1.0	3.1	47	81	19

Elite/Premier Dam

Two daughters sell – GGA Blackbird 13E as lot 10 and GGA Blackbird 3F as lot 11

A daughter, GGA Blackbird 15D by JL Upward 4058 was selected by Blairs.Ag Cattle Co., Lanigan, Saskatchewan and GGA Blackbird 13G by DMM International 54D was selected by Michael Burgess, Circle Y Angus, Big Beaver, Saskatchewan

A son, GGA Game MVP 7C by GDAR Game Day 449 was used briefly in our program and a S A V Resource 1441 son was selected by Morhart Farms Ltd., Spring Valley, Saskatchewan

2021 Calf Died

A.I. bred to S A V Renown 3439 on April 17, 2021, then exposed to DMM International 54D from April 27 to August 17, 2021 – Favorable to the A.I. date



GGA Blackbird 15D by JL Upward 4058 was selected by Blairs.Ag Cattle Co., Lanigan, Saskatchewan

10





10 **GGA Blackbird 13E**

Female GGA 13E 1975838 12/01/2017

S A V BRILLIANCE 8077
PVF INSIGHT 0129 1703597
 PVF MISSIE 790

EXAR CLASSEN 1422B
JUSTAMERE 1422B BLACKBIRD 472A 1762519
 JUSTAMERE 234R BLACKBIRD 169X
 S A V BISMARCK 5682
 S A V BLACKCAP MAY 5270
 P V F NEW HORIZON 001
 P V F MISS RAPTOR 024
 DAMERON FIRST CLASS
 EXAR PRINCESS 2006
 JUSTAMERE TIMELESS 234R
 EXAR BLACKBIRD 4083

BW	EPDS	CE	BW	WW	YW	MILK
84 lbs.		1.0	3.4	58	102	22

She ranks in the top 3% of the breed for rib-eye, the top 20% for weaning and yearling weight and the top 25% for fat

Her mother, Justamere 1422B Blackbird 472A, sells as lot 9

A son, GGA Gunslinger 2G by Justamere 1023 Doc Holiday 344E, was selected by Dave Marsh, Cupar Saskatchewan and GGA Raven 8H by S A V Resource 1441, was selected by Schropp Farm, Bengough, Saskatchewan

A.I. bred to S A V Resource 1441 on April 17, 2021, then exposed to DMM International 54D from April 27 to June 6, 2021 – Favorable to the A.I. date

10A **GGA West Pointe 12J**

Male GGA 12J 2209405 08/01/2021

STEVENSON TURNING POINT
CONLEY SOUTH POINT 8362 2099027
 P R LADY 909 4200-587

PLATTEMERE WEIGH UP K360
 STEVENSON PRIDE I167X
 S A V NET WORTH 4200
 P R 587 205-537

BW	EPDS	CE	BW	WW	YW	MILK
82 lbs.		8.0	1.7	58	99	23

He ranks in the top 15% of the breed for calving ease, the top 20% for weaning weight and the top 25% for yearling weight



GGA Raven 8H by S A V Resource 1441, was selected by Schropp Farm, Bengough, Saskatchewan

GLEN GABEL COMPLETE ANGUS DISPERSAL



Lot
11

11

GGA Blackbird 3F

Female GGA 3F 2037539 03/01/2018

S A V REGISTRY 2831
S A V SEEDSTOCK 4838 1890621
 S A V BLACKCAP MAY 4136
 EXAR CLASSEN 1422B
JUSTAMERE 1422B BLACKBIRD 472A 1762519
 JUSTAMERE 234R BLACKBIRD 169X
 RITO 707 OF IDEAL 3407 7075
 S A V MADAME PRIDE 0075
 S A V 8180 TRAVELER 004
 S A V MAY 2397
 DAMERON FIRST CLASS
 EXAR PRINCESS 2006
 JUSTAMERE TIMELESS 234R
 EXAR BLACKBIRD 4083

BW	EPDS	CE	BW	WW	YW	MILK
		0.0	3.4	56	96	20

She ranks in the top 25% of the breed for weaning weight and fat

Her daughter, GGA Blackbird 18H, sells as lot 12

Her mother, Justamere 1422B Blackbird 472A, sells as lot 9

A.I. bred to S A V Brilliance 8077 on April 17, 2021, then exposed to DMM International 54D from April 27 to August 17, 2021 – Favorable to the A.I. date

11A

GGA Blackbird 21J

Female GGA 21J 2209414 31/01/2021

S A V BRAND NAME 9115
CCCJ FREE STYLE 16B 1800857
 MVF BARANDA 50X
 S A V BISMARCK 5682
 S A V BLACKCAP MAY 5530
 HF TIGER 5T
 MVF BARANDA 154U

BW	EPDS	CE	BW	WW	YW	MILK
80 lbs.		5.0	0.8	54	93	19

She ranks in the top 20% of the breed for birth weight



GLEN GABEL COMPLETE ANGUS DISPERSAL



12

GGA Blackbird 18H

Female GGA 18H 2143525 20/01/2020

SITZ TRAVELER 8180
S A V FINAL ANSWER 0035 1061938
 S A V EMULOUS 8145
 S A V SEEDSTOCK 4838
GGA BLACKBIRD 3F 2037539
 JUSTAMERE 1422B BLACKBIRD 472A

G D A R TRAVELER 71
 SITZ EVERELDA ENTENSE 1137
 BON VIEW BANDO 598
 S A V SKY EMULOUS 2124
 S A V REGISTRY 2831
 S A V BLACKCAP MAY 4136
 EXAR CLASSEN 1422B
 JUSTAMERE 234R BLACKBIRD 169X

BW	EPDS	CE	BW	WW	YW	MILK
82 lbs.		5.0	2.0	62	104	21

She ranks in the top 10% of the breed for weaning weight and the top 15% for yearling weight
 Her mother, GGA Blackbird 3F, sells as lot 11

Exposed to Brooking Renovation 0160 from April 20 to July 28, 2021 – Observed bred on April 22, 2021



13A

GGA Prime Time 14J

Female GGA 14J 2209407 09/01/2021

S A V PIONEER 7301
S A V POTENTIAL 0205 1690278
 S A V ELBA 7021
 S A V BISMARCK 5682
JL Q MOTHER 1047 1610643
 BAILEY'S Q MOTHER 70'03

S A V FINAL ANSWER 0035
 S A V BLACKBIRD 5297
 S A V 004 DENSITY 4336
 S A V ELBA 2425
 G A R GRID MAKER
 S A V ABIGALE 0451
 R R 9440 SCOTCH CAP 1483
 EASTONDALE QUEEN MOTHER 58'00

S A V HARVESTOR 0338
 S A V EMBLYNETTE 5483
 GUMBO GULCH CREED 94S
 SOUTHERN OX BLACKBIRD 12J

BW	EPDS	CE	BW	WW	YW	MILK
93 lbs.		0.0	4.6	52	86	30

He ranks in the top 4% of the breed for milk and the top 20% for rib-eye



GGA Duval 9G selected by Donna Cross, Kipling, Saskatchewan

13 JL Q Mother 4154

Female JLMB 154B 1783932 13/02/2014

S A V PIONEER 7301
S A V POTENTIAL 0205 1690278
 S A V ELBA 7021

S A V BISMARCK 5682
JL Q MOTHER 1047 1610643
 BAILEY'S Q MOTHER 70'03

BW	EPDS	CE	BW	WW	YW	MILK
		6.0	1.9	37	72	28

She ranks in the top 10% of the breed for milk

Two daughters sell – GGA Q Mother 13H as lot 14 and GGA Q Mother 23E as lot 15

She produced two DMM International 54D sons, GGA Wind Talker 15F selected by David & Carolyn Message, Ormiston, Saskatchewan and GGA Duval 9G selected by Donna Cross, Kipling, Saskatchewan

A.I. bred to Basin Payweight 1682 on April 17, 2021, then exposed to DMM International 54D from April 27 to June 6, 2021 – Favorable to the A.I. date

GLEN GABEL COMPLETE ANGUS DISPERSAL

14

GGA Q Mother 13H

Female GGA 13H 2143515 12/01/2020

RITO 707 OF IDEAL 3407 7075
S A V ELIMINATOR 9105 1545531
 S A V ABIGALE 5646
 S A V POTENTIAL 0205
JL Q MOTHER 4154 1783932
 JL Q MOTHER 1047

R R RITO 707
 IDEAL 3407 OF 1418 076
 S A F 598 BANDO 5175
 S A V ABIGALE 6062
 S A V PIONEER 7301
 S A V ELBA 7021
 S A V BISMARCK 5682
 BAILEY'S Q MOTHER 70'03

BW	EPDS	CE	BW	WW	YW	MILK
90 lbs.		0.0	2.8	47	91	27

She ranks in the top 10% of the breed for milk
 Her mother, JL Q Mother 4154, sells as lot 13



15

GGA Q Mother 23E

Female GGA 23E 1975846 04/02/2017

SITZ UPWARD 307R
JL UPWARD 4058 1783834
 JL JUNE 06 40
 S A V POTENTIAL 0205
JL Q MOTHER 4154 1783932
 JL Q MOTHER 1047

CONNELLY ONWARD
 SITZ HENRIETTA PRIDE 81M
 BOYD NEW DAY 8005
 JUNE OF PEAK DOT 813P
 S A V PIONEER 7301
 S A V ELBA 7021
 S A V BISMARCK 5682
 BAILEY'S Q MOTHER 70'03

BW	EPDS	CE	BW	WW	YW	MILK
82 lbs.		4.0	2.6	44	78	30

She ranks in the top 4% of the breed for milk, the top 15% for fat and the top 25% for rib-eye

Her mother, JL Q Mother 4154, sells as lot 13

A son, GGA Two Guns 4G by Justamere 1023 Doc Holiday 344E, was selected by Bar Heart Ranch, Irma, AB

A.I. bred to S A V President 6847 on April 17, 2021, then exposed to DMM International 54D from April 27 to June 6, 2021, then exposed to GGA Maverick 8F from May 25 to June 26, 2021 – Favorable to the A.I. date

15A

GGA Colonel 17J

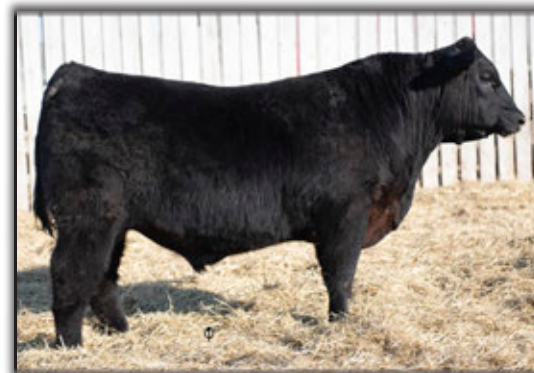
Male GGA 17J 2209410 12/01/2021

COLEMAN CHARLO 0256
S A V PRESIDENT 6847 2022643
 S A V BLACKCAP MAY 4136

O C C PAXTON 730P
 BOHI ABIGALE 6014
 S A V 8180 TRAVELER 004
 S A V MAY 2397

BW	EPDS	CE	BW	WW	YW	MILK
72 lbs.		3.0	3.4	61	102	25

He ranks in the top 15% of the breed for weaning weight, the top 20% for yearling weight and the top 25% for milk



GGA Two Guns 4G selected by Bar Heart Ranch, Irma, AB

GLEN GABEL COMPLETE ANGUS DISPERSAL



16

GGA Q Mother 17F

Female GGA 17F 2035423 15/01/2018

BUSHES EASY DECISION 98
PEAK DOT EASY DECISION 114C 1848237
 PEAK DOT LADY 810A

PVF INSIGHT 0129
GGA Q MOTHER 8D 1903493
 JL Q MOTHER 4154

VIN-MAR O'REILLY FACTOR
 BUSHES BIG BLACKBIRD 7885
 S A V BULLET 0473
 LADY OF PEAK DOT 631U
 S A V BRILLIANCE 8077
 PVF MISSIE 790
 S A V POTENTIAL 0205
 JL Q MOTHER 1047

BW	EPDS	CE	BW	WW	YW	MILK
.		3.0	3.2	60	105	26

She ranks in the top 15% of the breed for weaning and yearling weight and the top 20% for milk

Her grand dam, JL Q Mother 4154, sells as lot 13

A son was selected by Muirhead Cattle Company, Shellbrook, Saskatchewan

A.I. bred to S A V Brilliance 8077 on April 17, 2021, then exposed to DMM International 54D from April 27 to June 6, 2021 – Observed bred on May 5, 2021

16A **GGA Stylin 28J**

Male GGA 28J 2209423 29/01/2021

S A V BRAND NAME 9115
CCCJ FREE STYLE 16B 1800857
 MVF BARANDA 50X

S A V BISMARCK 5682
 S A V BLACKCAP MAY 5530
 HF TIGER 5T
 MVF BARANDA 154U

BW	EPDS	CE	BW	WW	YW	MILK
79 lbs.		6.0	0.8	56	98	22

He ranks in the top 20% of the breed for birth weight and the top 25% for weaning and yearling weight

17

SIX MILE Beyond Beauty 618D

Female SIXM 618D 1943569 09/04/2016

S TITLEST 1145
BAR-H CROSSFIRE 63A 1746814
 HF TIBBIE 93U

VIN-MAR FOCUS IN 8847
SIX MILE BEYOND BEAUTY 124Y 1606736
 SIX MILE REAL BEAUTY 803U

RA LINCOLN W144
 S CORA 572
 S A V 004 PREDOMINANT 4438
 HF TIBBIE 35K
 MYTTY IN FOCUS
 BALDRIDGE ERROLINE S216
 S A V NET WORTH 4200
 WAT-CHA STUNNING BEAUTY 5S

BW	EPDS	CE	BW	WW	YW	MILK
		4.0	2.0	65	116	23

She ranks in the top 7% of the breed for yearling weight and the top 8% for weaning weight

Two daughters sell – GGA Beyond Beauty 13F, sells as lot 18 and GGA Beyond Beauty 20G as lot 19

A son, GGA Bourbon 22H by GGA Maverick 8F, was selected by Michael Koshel, Rocking K Angus, Oxdrift, Ontario

A.I. bred to S A V Renown 3439 on April 17, 2021, then exposed to DMM International 54D from April 27 to August 17, 2021 Favorable to the A.I. date



GLEN GABEL COMPLETE ANGUS DISPERSAL



18 GGA *Beyond Beauty* 13F

Female GGA 13F 2035419 11/01/2018

SITZ TRAVELER 8180
S A V FINAL ANSWER 0035 1061938
 S A V EMULOUS 8145
 BAR-H CROSSFIRE 63A
SIX MILE BEYOND BEAUTY 618D 1943569
 SIX MILE BEYOND BEAUTY 124Y

G D A R TRAVELER 71
 SITZ EVERELDA ENTENSE 1137
 BON VIEW BANDO 598
 S A V SKY EMULOUS 2124
 S TITLEST 1145
 HF TIBBIE 93U
 VIN-MAR FOCUS IN 8847
 SIX MILE REAL BEAUTY 803U

BW	EPDS	CE	BW	WW	YW	MILK
		8.0	0.3	60	103	24

She ranks in the top 15% of the breed for calving ease, birth weight and weaning weight and the top 20% for yearling weight

Her mother, Six Mile Beyond Beauty 618D, sells as lot 17

A son, GGA Gibson's Finest 19H, was selected by Aitken Acres, Allan & Sherry Aitken, Eyebrow, Saskatchewan

**A.I. bred to S A V Renown 3439 on April 17, 2021, then exposed to DMM International 54D from April 27 to June 6, 2021
 Favorable to the A.I. service**

18A GGA *Gibson's Finest* 15J

Male GGA 15J 2209408 09/01/2021

HF KODIAK 5R
SOO LINE MOTIVE 9016 1504907
 TLA BEAUTY 5R

SANDY BAR ADVANTAGE 43M
 WILBAR RUBY 955N
 RR 7407 RAINMAKER 2154
 TERRLENE BEAUTY 35F

BW	EPDS	CE	BW	WW	YW	MILK
82 lbs.		6.0	0.7	54	95	23

He ranks in the top 20% of the breed for birth weight



GGA Gibson's Finest 19H, was selected by Aitken Acres, Allan & Sherry Aitken, Eyebrow, Saskatchewan

GLEN GABEL COMPLETE ANGUS DISPERSAL



19 GGA *Beyond Beauty* 20G

Female GGA 20G 2095914 22/02/2019

EXAR BLUE CHIP 1877B	DAMERON FIRST CLASS
JUSTAMERE 1877 BLUE PRINT 352E 1994527	GREENS PRINCESS 1012
JUSTAMERE 253 BESSIE 937T	EXAR MASTER 253
	SAR BESSIE 416
	S TITLEST 1145
BAR-H CROSSFIRE 63A	HF TIBBIE 93U
SIX MILE BEYOND BEAUTY 618D 1943569	VIN-MAR FOCUS IN 8847
SIX MILE BEYOND BEAUTY 124Y	SIX MILE REAL BEAUTY 803U

BW	EPDS	CE	BW	WW	YW	MILK
		5.0	2.0	61	104	24

She ranks in the top 15% of the breed for weaning weight and yearling weight and the top 20% for maternal calving ease

Her mother, Six Mile Beyond Beauty 618D, sells as lot 17

**A.I. bred to PVF Insight 0129 on April 17, 2021, then exposed to Brooking Renovation 0160 from April 27 to August 17, 2021
Observed bred on May 7, 2021**



20 JL *Katinka* 2130

Female JLMB 130Z 1668033 25/01/2012

RITO 707 OF IDEAL 3407 7075	R R RITO 707
S A V ELIMINATOR 9105 1545531	IDEAL 3407 OF 1418 076
S A V ABIGALE 5646	S A F 598 BANDO 5175
	S A V ABIGALE 6062
	EMULATION N BAR 5522
N BAR EMULATION EXT	N BAR PRIMROSE 2424
BROCKHILL KATINKA 6R 1286889	B/R NEW FRONTIER 095
BROCKHILL NEW KATINKA 5N	JWK KATINKA 9285

BW	EPDS	CE	BW	WW	YW	MILK
		3.0	0.6	41	65	26

She ranks in the top 15% of the breed for birth weight and the top 20% for milk

Her daughter, GGA Katinka 2F, sells as lot 21

A daughter, GGA Katinka 20C by SCC Baloo 31A, was selected by Graham & Patricia Alexander, Eastend, Saskatchewan

A son, GGA Steelers 14D by JL Upward 4058, was selected by Fairhill Ranch and GGA Canada 150 4E by EXAR Declaration 1686B was selected by Slippery Slope Ranch Ltd.

**Exposed to DMM International 54D from April 14 to August 17, 2021
Observed bred on April 29, 2021**

GLEN GABEL COMPLETE ANGUS DISPERSAL



21 GGA *Katinka* 2F

Female GGA 2F 2035409 02/01/2018

CONNEALY CONSENSUS
CONNEALY EARNAN 076E 1767036
 BRAZILA OF CONANGA 3991 839A

S A V ELIMINATOR 9105
JL KATINKA 2130 1668033
 BROCKHILL KATINKA 6R

KMK ALLIANCE 6595 187
 BLINDA OF CONANGA 004
 CONNEALY TOBIN
 BRESHA OF CONANGA 1251
 RITO 707 OF IDEAL 3407 7075
 S A V ABIGALE 5646
 N BAR EMULATION EXT
 BROCKHILL NEW KATINKA 5N

BW	EPDS	CE	BW	WW	YW	MILK
		-1.0	2.3	56	91	23

She ranks in the top 25% of the breed for weaning weight
 Her mother, JL Katinka 2130, sells as lot 20

A.I. bred to S A V Renown 3439 on April 17, 2021, then exposed to DMM International 54D from April 27 to June 6, 2021
 Observed bred on May 9, 2021

21A GGA *Valley* 16J

Male GGA 16J 2209409 09/01/2021

S A V IRON MOUNTAIN 8066
S A V ANGUS VALLEY 1867 1719214
 S A V MAY 2397

TC GRIDIRON 258
 S A V MADAME PRIDE 3249
 S A F 598 BANDO 5175
 S A V MAY 7238

BW	EPDS	CE	BW	WW	YW	MILK
84 lbs.		0.0	2.1	55	98	22

He ranks in the top 25% of the breed for yearling weight



DMM International 54D - 2016 & 2018 Supreme Champion

GLEN GABEL COMPLETE ANGUS DISPERSAL



She ranks in the top 15% of the breed for weaning weight and the top 20% for yearling weight and milk

Two daughters sell – GGA Heroine 15H as lot 23 and GGA Heroine 16H as lot 24

A daughter, GGA Heroine 16F by PA Fortitude 2500, was selected by Sunny Grove Angus, Radville, Saskatchewan

A son, GGA Lonesome Dove 6G by DMM International 54D, was selected by Muirhead Cattle Company, Shellbrook, Saskatchewan

A.I. bred to S A V Renown 3439 on April 17, 2021, then exposed to DMM International 54D from April 27 to August 17, 2021 Favorable to the A.I. service

22 ARY Heroine 614D

Female ARY 614D 1909860 16/01/2016

BASIN EXCITEMENT
LAZY E EXCITEMENT 439A 1752352
 RANCHERS CHOICE ERICA 35Y

MCATL PURE PRODUCT 903-55
ARY HEROINE 5A 1731947
 N7'S HEROINE 37Y

BASIN EXPEDITION R156
 BASIN LADY S532 AK
 DOUBLE AA BARDOLIER 217'06
 SASKALTA ERICA 292L
 CONNEALY FINAL PRODUCT
 M A ESTA 55-252
 S A V NET WORTH 4200
 N7'S HEROINE 65R

BW	EPDS	CE	BW	WW	YW	MILK
		0.0	3.2	59	103	26

22A GGA Over Draft 7J

Male GGA 7J 2209401 04/01/2021

CONNEALY EARNAN 076E
BROOKING BANK NOTE 4040 1776488
 E A ROSE 918

CONNEALY CONSENSUS
 BRAZILA OF CONANGA 3991 839A
 S A V FINAL ANSWER 0035
 E A ROSE 738

BW	EPDS	CE	BW	WW	YW	MILK
95 lbs.		1.0	2.9	64	109	18

He ranks in the top 9% of the breed for weaning weight and the top 10% for yearling weight



23 GGA Heroine 15H

Female GGA 15H 2143522 14/01/2020

PVF INSIGHT 0129
GGA MAVERICK 8F 2035414
 GRIST NANCY IN FOCUS 127B

LAZY E EXCITEMENT 439A
ARY HEROINE 614D 1909860
 ARY HEROINE 5A

S A V BRILLIANCE 8077
 PVF MISSIE 790
 CONNEALY IN FOCUS 4925
 BLACK BAR 5 NOTION 3205U
 BASIN EXCITEMENT
 RANCHERS CHOICE ERICA 35Y
 MCATL PURE PRODUCT 903-55
 N7'S HEROINE 37Y

BW	EPDS	CE	BW	WW	YW	MILK
75 lbs.		1.0	3.4	71	124	23

She ranks in the top 3% of the breed for weaning and yearling weight

Her mother, ARY Heroine 614D, sells as lot 22

Her twin sister, GGA Heroine 16H, sells as lot 24

**Exposed to Brooking Renovation 0160 from April 20 to July 28, 2021
 Observed bred on May 6, 2021**

GLEN GABEL COMPLETE ANGUS DISPERSAL

24

GGA Heroine 16H

Female GGA 16H 2143523 14/01/2020

PVF INSIGHT 0129
GGA MAVERICK 8F 2035414
 GRIST NANCY IN FOCUS 127B

LAZY E EXCITEMENT 439A
ARY HEROINE 614D 1909860
 ARY HEROINE 5A

S A V BRILLIANCE 8077
 PVF MISSIE 790
 CONNEALY IN FOCUS 4925
 BLACK BAR 5 NOTION 3205U
 BASIN EXCITEMENT
 RANCHERS CHOICE ERICA 35Y
 MCATL PURE PRODUCT 903-55
 N7'S HEROINE 37Y

BW	EPDS	CE	BW	WW	YW	MILK
77 lbs.		1.0	3.4	71	124	23

She ranks in the top 3% of the breed for weaning and yearling weight

Her mother, ARY Heroine 614D, sells as lot 22

Her twin sister, GGA Heroine 15H, sells as lot 23

A.I. bred to Deer Valley Growth Fund on April 17, 2021 then exposed to Brooding Renovation 0160 from April 27 to July 28, 2021 Favorable to the A.I. service



Lot 24

25

GGA Buxom Fancy 5A

Female GGA 5A 1718524 05/01/2013

SITZ UPWARD 307R
NORTHERN VIEW UPWARD 93Y 1623550
 SOO LINE DUCHESS 7266

WOODHILL FORESIGHT
LOOKOUT BUXOM FANCY 11U 1457186
 LOOKOUT BUXOM FANCY 232M

CONNEALY ONWARD
 SITZ HENRIETTA PRIDE 81M
 CUDLOBE YELLOWSTONE 80M
 SANDY BAR DUCHESS 96J
 PAPA FORTE 1921
 BON VIEW GAMMER 85
 PRIME TIME'S DIRECT DEPOSIT
 LOOKOUT BUXOM FANCY 5K

BW	EPDS	CE	BW	WW	YW	MILK
		1.0	3.0	50	92	28

She ranks in the top 10% of the breed for milk and the top 20% for carcass weight

Her daughter, GGA Buxom Fancy 21H, sells as lot 26

A son, GGA Its Game Day 3C by GDAR Game Day 449, was selected by Calibre Livestock Ltd., Cupar, Saskatchewan and GGA Fancy My Answer 9D by JL All Answers 1009, was selected by Slippery Slope Ranch, Ltd.

Exposed to DMM International 54D from April 14 to August 17, 2021 Observed bred on April 16, 2021

25A

GGA Buxom Fancy 20J

Female GGA 20J 2209413 19/01/2021

S A V INTERNATIONAL 2020
DMM INTERNATIONAL 54D 1922656
 DMM BLACKBIRD 105A

S A V HARVESTOR 0338
 S A V EMBLYNETTE 5483
 GUMBO GULCH CREED 94S
 SOUTHERN OX BLACKBIRD 12J

BW	EPDS	CE	BW	WW	YW	MILK
92 lbs.		-2.0	4.8	58	94	4.0

She ranks in the top 2% of the breed for milk, the top 10% for carcass weight and the top 20% for weaning weight and rib-eye



Lot 25

GLEN GABEL COMPLETE ANGUS DISPERSAL



She ranks in the top 3% of the breed for carcass weight, the top 6% for rib-eye, the top 10% for yearling weight and the top 15% for weaning weight

Her mother, GGA Buxom Fancy 5A, sells as lot 25

Exposed to Brooking Renovation 0160 from April 20 to July 28, 2021
Observed bred on April 28, 2021

26 GGA Buxom Fancy 21H
 Female GGA 21H 2143528 26/01/2020

PVF INSIGHT 0129	SA V BRILLIANCE 8077
GGA MAVERICK 8F 2035414	PVF MISSIE 790
GRIST NANCY IN FOCUS 127B	CONNELY IN FOCUS 4925
	BLACK BAR 5 NOTION 3205U
NORTHERN VIEW UPWARD 93Y	SITZ UPWARD 307R
GGA BUXOM FANCY 5A 1718524	SOO LINE DUCHESS 7266
LOOKOUT BUXOM FANCY 11U	WOODHILL FORESIGHT
	LOOKOUT BUXOM FANCY 232M

BW	EPDS	CE	BW	WW	YW	MILK
84 lbs.		3.0	2.8	60	109	24

27 JL Ballot 7105
 Female JLMB 105E 1967594 24/01/2017

RITO 707 OF IDEAL 3407 7075	R R RITO 707
SA V RENOWN 3439 1887276	IDEAL 3407 OF 1418 076
SA V BLACKCAP MAY 4136	SA V 8180 TRAVELER 004
	SA V MAY 2397
SA V BISMARCK 5682	G A R GRID MAKER
JL BALLOT 2173 1668064	SA V ABIGALE 0451
JL BALLOT 0204	SA V FOUR SEASONS 5231
	GREENBUSH BALLOT 21R

BW	EPDS	CE	BW	WW	YW	MILK
.		3.0	1.2	65	118	24



She ranks in the top 5% of the breed for yearling weight and the top 8% for weaning weight

Her daughter, JL Ballot 0574, sells as lot 28

A daughter, JL Ballot 9491 by S A V President 6847, was selected by Yarrow Creek Farm, Pincher Creek, Alberta

A.I. bred to S A V Rainfall 6846 on April 17, 2021, then exposed to Brooking Renovation 0160 from April 20 to July 28, 2021
Favorable to the A.I. service

GLEN GABEL COMPLETE ANGUS DISPERSAL

She ranks in the top 7% of the breed for yearling weight, the top 10% for weaning weight, the top 20% for birth weight and milk

Her mother, JL Ballot 7105, sells as lot 27



28 JL Ballot 0574

Female JLMB 574H 2173909 24/08/2020

COLEMAN CHARLO 0256
SA V RAINFALL 6846 2013656
 SA V BLACKCAP MAY 4136

SA V RENOWN 3439
JL BALLOT 7105 1967594
 JL BALLOT 2173

O C C PAXTON 730P
 BOHI ABIGALE 6014
 SA V 8180 TRAVELER 004
 SA V MAY 2397
 RITO 707 OF IDEAL 3407 7075
 SA V BLACKCAP MAY 4136
 SA V BISMARCK 5682
 JL BALLOT 0204

BW	EPDS	CE	BW	WW	YW	MILK
81 lbs.		5.0	0.9	63	116	26

29 WILBAR Mayflower 714G

Female WJD 714G 2121862 24/01/2019

BROOKING BANK NOTE 4040
BROOKING REWIND 6023 1906212
 BROOKING MAUREEN EMILIE 350

SA V NET WORTH 4200
WILBAR MAYFLOWER 48Z 1701304
 WILBAR MAYFLOWER 634T

CONNEALY EARNAN 076E
 E A ROSE 918
 SITZ RIGHT ANSWER 506
 SOO LINE MAUREEN EMILIE 0144
 SA V 8180 TRAVELER 004
 SA V MAY 2410
 SANDY BAR ADVANTAGE 43M
 WILBAR MAYFLOWER 70H

BW	EPDS	CE	BW	WW	YW	MILK
		4.0	0.9	45	70	20

She ranks in the top 20% of the breed for birth weight
 Donor qualified

A.I. bred to S A V Resource 1441 on April 17, 2021, then exposed to DMM International 54D from April 27 to June 6, 2021
 Observed bred on May 8, 2021

29A GGA Due South 2J

Male GGA 2J 2210146 02/01/2021

STEVENSON TURNING POINT
CONLEY SOUTH POINT 8362 2099027
 P R LADY 909 4200-587

PLATTEMERE WEIGH UP K360
 STEVENSON PRIDE I167X
 SA V NET WORTH 4200
 P R 587 205-537

BW	EPDS	CE	BW	WW	YW	MILK
78 lbs.		8.0	1.3	53	86	22

He ranks in the top 15% of the breed for calving ease



GLEN GABEL COMPLETE ANGUS DISPERSAL

30 SIX MILE *Erica* 651G

Female SIXM 651G 2115357 30/03/2019

REMITALL F BRIGADIER 86B
REMITALL F DIESEL 76D 1909643
 REMITALL F JET 74Y

HF PREDOMINANT 213U
DIAMOND T ERICA 1109 - 213U 1608798
 DIAMOND T ERICA - N.H. 9927

SAV RESOURCE 1441
 JUSTAMERE 5289 SAHARA 543U
 HF TIGER 5T
 REMINGTON JET 67U
 SA V 004 PREDOMINANT 4438
 HF ERICA 176P
 BELVIN NIGHTHAWK 32'03
 DIAMOND BIG GUN'S GINGER 87'03

BW	EPDS	CE	BW	WW	YW	MILK
.		3.0	3.1	69	133	23

She ranks in the top 1% of the breed for yearling weight and the top 4% for weaning weight

A.I. bred to S A V Resource 1441 on April 17, 2021, then exposed to DMM International 54D from April 27 to June 6, 2021, then exposed to GGA Maverick 8F from May 25 to June 26, 2021
 Observed bred on May 23, 2021



30A GGA *Big Show* 22J

Male GGA 22J 2209416 22/01/2021

SCHIEFELBEIN ATTRACTIVE 4565
SCHIEFELBEIN SHOWMAN 338 2133416
 FROSTY ELBA 3745

JMB TRACTION 292
 FROSTY ANSWER 3979
 SA V RENOWN 3439
 FROSTY UPWARD 1100

BW	EPDS	CE	BW	WW	YW	MILK
82 lbs.		5.5	1.7	78	148	25

He ranks in the top 1% of the breed for weaning weight and yearling weight and the top 25% for milk



31 SIX MILE *Enchantress* 482G

Female SIXM 482G 2103915 10/03/2019

REMITALL F BRIGADIER 86B
REMITALL F DIESEL 76D 1909643
 REMITALL F JET 74Y

SA V FINAL ANSWER 0035
JL ENCHANTRESS 4087 1783865
 JL ENCHANTRESS 2018

SAV RESOURCE 1441
 JUSTAMERE 5289 SAHARA 543U
 HF TIGER 5T
 REMINGTON JET 67U
 SITZ TRAVELER 8180
 SA V EMULOUS 8145
 SA V BULLET 0473
 JL ENCHANTRESS 0185

BW	EPDS	CE	BW	WW	YW	MILK
.		5.0	1.6	57	117	17

She ranks in the top 6% of the breed for yearling weight and the top 20% for weaning weight

A.I. bred to S A V Resource 1441 on April 17, 2021, then exposed to Brooking Renovation 0160 from April 27 to May 28, 2021
 Observed bred on May 23, 2021

31A GGA *Enchantress* 27J

Female GGA 27J Applied For 28/01/2021

LT TERRITORY 5824 OF EA
ELLINGSON DOMINANCE 2079 1779562
 SAV BLACKCLASS 374

SITZ TRADITION RLS 8702
 EA LUCY 141
 BASIN MAX 602C
 G A R BLACKCLASS 1485

BW	EPDS	CE	BW	WW	YW	MILK
88 lbs.		7.0	1.3	56	113	23

She ranks in the top 8% of the breed for yearling weight and the top 25% for calving ease and weaning weight

GLEN GABEL COMPLETE ANGUS DISPERSAL

32 PREMIER HASSON *Empress* 910

Female PLS 910G 2094976 13/01/2019

PLAINVIEW LUTTON E102
S&R ROUNDTABLE J328 1930958
 PVF PROVEN QUEEN 786

DAMERON FIRST IMPRESSION
OSU EMPRESS 3100 1821260
 OSU EMPRESS 0135

EXAR LUTTON 1831
 PLAINVIEW PRIDE C123
 BR MIDLAND
 PVF PROVEN QUEEN 419
 SA V BRILLIANCE 8077
 DAMERON NORTHERN MISS 3114
 EXAR SPARTAN 6225
 OSU EMPRESS 7165

BW	EPDS	CE	BW	WW	YW	MILK
		6.0	2.5	53	89	26

She ranks in the top 20% of the breed for milk and rib-eye

A.I. bred to S A V Final Answer 0035 on April 17, 2021, then exposed to DMM International 54D from April 27 to June 6, 2021
 Favorable to the A.I. Service

32A GGA *Table Top* 1J

Male GGA 1J 2210145 02/01/2021

WERNER FLAT TOP 4136
NEILCAIRN FLAT TOP 4252F 2078906
 NEILCAIRN HEADLINER 252B

CONNEALY BLACK GRANITE
 WERNER LADY 030
 SA V FINAL ANSWER 0035
 NEILCAIRN MISS HEADLINER 52Z

BW	EPDS	CE	BW	WW	YW	MILK
72 lbs.		11.0	0.9	56	100	29

He ranks in the top 6% of the breed for calving ease and milk, the top 10% for maternal calving ease, the top 20% for birth weight and the top 25% for weaning and yearling weight



Lot 32



Lot 33

33 DMM *Miss Essence* 22G

Female DMM 22G 2081749 05/01/2019

74-51 SUDDEN LOOK 1023
DMM STACK 8D 1938311
 DMM MISS ESSENCE 14Y

NORTHERN VIEW SMW GUSTOV 3Z
DMM MISS ESSENCE 48E 1965729
 DMM MISS ESSENCE 25B

B C LOOKOUT 7024
 EXG LUCY P061 R3
 GUMBO GULCH CREED 94S
 DMM MISS ESSENCE 37T
 REMITALL H RACHIS 21R
 ISLA BANK NEONIA 27S
 GUMBO GULCH CREED 94S
 DMM MISS DYNA ESSENCE 7M

BW	EPDS	CE	BW	WW	YW	MILK
		8.0	1.6	55	94	24

She ranks in the top 15% of the breed for calving ease and the top 20% for maternal calving ease

A.I. bred to SA V Final Answer 0035 on April 17, 2021, then exposed to Brooking Renovation 0160 from April 27 to May 28, 2021, then exposed to GGA Maverick 8F from May 25 to June 26, 2021
 Observed bred on May 6, 2021

33A GGA *Miss Essence* 8J

Female GGA 8J 2209402 04/01/2021

DAINES HEAVY SI 57Z
NORTHLINE COOL CAT 76B 1817110
 NORTHLINE SAVING GRACE 776T

DAINES BLACK STOCKMAN 14X
 DAINES MISS ANCHOR 34T
 GAMBLES HOT ROD
 NORTHLINE SAVING GRACE 76L

BW	EPDS	CE	BW	WW	YW	MILK
72 lbs.		6.0	1.1	50	81	23

She ranks in the top 20% of the breed for maternal calving ease and the top 25% for birth weight



34 JUSTAMERE 1877 *Evergreen* 389E
 Female AFA 389E 1994653 23/02/2017

CONNEALY RIGHT ANSWER 746
EXAR REPUTATION 3508B 1818655
 EXAR ERICA 9299

RITO 6EM3 OF 4L1 EMBLAZON
EXAR EVERGREEN 0048 1804782
 SOUTHERN EVERGREEN 3123

BW	EPDS	CE	BW	WW	YW	MILK
	9.0	1.2	62	104	24	

She ranks in the top 10% of the breed for calving ease and weaning weight and the top 15% for yearling weight

A son, GGA Two Feathers 1G by K Bar D Native Joe 32D, was selected by Excel Grazing, Ormiston, Saskatchewan and Reid Goodwin selected GGA Tracker 10H sired by S A V Eliminator 9105

**A.I. bred to S A V Renown 3439 on April 17, 2021, then exposed to DMM International 54D from April 27 to August 17, 2021
 Observed bred on May 5, 2021**

34A GGA *Evergreen* 5J
 Female GGA 5J 2209398 04/01/2021

S A V FINAL ANSWER 0035
S A V PIONEER 7301 1481377
 S A V BLACKBIRD 5297

SITZ TRAVELER 8180
 S A V EMULOUS 8145
 BOYD NEW DAY 8005
 S A V BLACKBIRD 1082

BW	EPDS	CE	BW	WW	YW	MILK
90 lbs.		6.0	2.3	60	104	25

She ranks in the top 15% of the breed for weaning and yearling weight and the top 25% for milk



GGA Two Feathers 1G was selected by Excel Grazing, Ormiston, SK

GLEN GABEL COMPLETE ANGUS DISPERSAL

She ranks in the top 1% of the breed for milk, the top 10% for calving ease and the top 20% for birth weight

Daughters have been selected by Wendelin Farm, Chapeau, Quebec and Yarrow Creek Farm, Pincher Creek, Alberta

A son by S A V 654X Rainmaster 6849 is herd bull for CMT Farms, Meota, Saskatchewan and Murray Lake Colony selected a son by S A V 707 Rito 1439

A.I. bred to S A V Renown 3439 on April 17, 2021, then exposed to Brooking Renovation 0160 from April 27 to May 28, 2021, then exposed to GGA Maverick 8F from May 25 to June 26, 2021 Favorable to the A.I. service



35 SANE UPG Barbie 112A
Female SANE 112A 1718761 12/01/2013

SITZ UPWARD 307R
STYLES UPGRADE J59 1582386
PLAINVIEW LASSIE 71B

GDAR GAME DAY 449
SANE G.D. BARBIE 112Y 1601240
SANE ADM BARBIE 122W

CONNEALY ONWARD
SITZ HENRIETTA PRIDE 81M
BON VIEW NEW DESIGN 1407
PLAINVIEW LASSIE 92X
BOYD NEW DAY 8005
G D A R MISS WIX 474
WOODHILL ADMIRAL 77K
SANE 110K BARBIE 324M

BW	EPDS	CE	BW	WW	YW	MILK
	9.0	0.7	46	87	32	

35A GGA Barbie 25J
Female GGA 25J 2209420 28/01/2021

R R RITO 707
IDEAL 3407 OF 1418 076
S A V RESOURCE 1441 1707295
S A V BLACKCAP MAY 4136
S A V MAY 2397

BW	EPDS	CE	BW	WW	YW	MILK
88 lbs.	5.0	2.6	58	110	24	

She ranks in the top 10% of the breed for yearling weight and rib-eye and the top 20% for weaning weight



JL Rainmaker 0112, a son of SANE UPG Barbie 112A was selected by CMT Farms, Meota, Saskatchewan



GLEN GABEL COMPLETE ANGUS DISPERSAL

36 VOS VEGAS *Annie K* ET 3E
Female VOS 3E 1994667 03/01/2017

SILVEIRAS STYLE 9303
GREENE POKERFACE 1304 1976614
GOHR COVERGIRL 1124

CUDLOBE YELLOWSTONE 80M
SOO LINE ANNIE K 1094 1651100
SOO LINE ANNIE K 3012

GAMBLES HOT ROD
SILVEIRAS ELBA 2520
GOHR MAXIMUS 0901
GOHR COVERGIRL 0972
VERMILION YELLOWSTONE
STEVENS ON ENCHANTRESS 425F
GEIS MAXIMUM 26'95
GEIS ANNIE K 230'97

BW	EPDS	CE	BW	WW	YW	MILK
		4.0	1.9	45	86	20

Her daughter, GGA Annie K 16G, sells as lot 37

Her son was selected by Poplar Meadow Angus, Houston, BC
Second calf sold to Poplar Meadows, BC

**A.I. bred to S A V Renown 3439 on April 17, 2021, then exposed to Brooking Renovation 0160 from April 27 to May 28, 2021
Favorable to the A.I. service**



36A GGA *Currency* 10J
Female GGA 10J 2209404 06/01/2021

CONNEALY EARNAN 076E
BROOKING BANK NOTE 4040 1776488
E A ROSE 918

CONNEALY CONSENSUS
BRAZILA OF CONANGA 3991 839A
S A V FINAL ANSWER 0035
E A ROSE 738

BW	EPDS	CE	BW	WW	YW	MILK
74 lbs.		6.0	0.9	55	95	15

He ranks in the top 20% of the breed for birth weight and maternal calving ease



37 GGA *Annie K* 16G
Female GGA 16G 2094373 13/02/2019

HF THUNDERBIRD 146Y
PM THUNDERSTRUCK 22'13 1752467
MVF ROSEBUD 313U

GREENE POKERFACE 1304
VOS VEGAS ANNIE K ET 3E 1994667
SOO LINE ANNIE K 1094

HF TIGER 5T
HF ECHO 187N
WESTERN WIDESPREAD 1L
MVF ROSEBUD 906N
SILVEIRAS STYLE 9303
GOHR COVERGIRL 1124
CUDLOBE YELLOWSTONE 80M
SOO LINE ANNIE K 3012

BW	EPDS	CE	BW	WW	YW	MILK
		0.0	3.5	53	91	19

Her mother, Vos Vegas Annie K ET 3E, sells as lot 36

**A.I. bred to S A V Final Answer 0035 on April 17, 2021, then exposed to Brooking Renovation 0160 from April 27 to May 28, 2021
Observed bred on May 6, 2021**

37A GGA *Annie K* 26J
Female GGA 26J 2209422 29/01/2021

S A V BRAND NAME 9115
CCCJ FREE STYLE 16B 1800857
MVF BARANDA 50X

S A V BISMARCK 5682
S A V BLACKCAP MAY 5530
HF TIGER 5T
MVF BARANDA 154U

BW	EPDS	CE	BW	WW	YW	MILK
84 lbs.		4.0	1.2	53	92	18

GLEN GABEL COMPLETE ANGUS DISPERSAL

38 GF Lucy 11C

Female GFA 11C 1850247 09/01/2015

CONNEALY PRODUCT 568
CONNEALY FINAL PRODUCT 1643843
 EBONISTA OF CONANGA 471

S A V NET WORTH 4200
GF LUCY 11A 1717122
 5-STAR LUCY 11R

BW	EPDS	CE	BW	WW	YW	MILK
		5.0	0.4	40	72	29

G A R RETAIL PRODUCT
 PRIDE FINE OF CONANGA 566
 CONNEALY DEEP CANYON 454
 EBONISA OF CONANGA 5469
 S A V 8180 TRAVELER 004
 S A V MAY 2410
 CRESCENT CREEK QUANTUM 79M
 BEAU VALLEY LUCY

She ranks in the top 6% of the breed for milk and the top 15% for birth weight

A.I. bred to S A V Brilliance 8077 on April 17, 2021, then exposed to DMM International 54D from April 27 to May 28, 2021
 Favorable to the A.I. Service



39 BAR-H Blackbird 13D

Female AHPC 13D 1936093 15/03/2016

BARSTOW CASH
KR CASH CI 4602 1835116
 WK BLACKBIRD 5066

HF DONE DEAL 64T
BAR-H EVENING TINGE 55A 1746807
 BH 7N LULU 7R

BW	EPDS	CE	BW	WW	YW	MILK
		8.0	0.9	42	81	21

SITZ DASH 10277
 BARSTOW QUEEN W16
 CONNEALY NETWORK
 TC BLACKBIRD 0127
 HF DONE RIGHT 125R
 HF EVENING TINGE 99R
 PERRYVILLE DURANGO 7N
 PERRYVILLE LEXUS 16N

She ranks in the top 1% of the breed for maternal calving ease, the top 15% for calving ease and the top 20% for birth weight and marbling

A daughter, GGA Blackbird 20F by Peak Dot Easy Decision 114C, was selected by LLB Angus Farm Ltd., Erskine, Alberta

A son, GGA Smokin 10G by DMM International 54D, was selected by Donna Cross, Kipling, Saskatchewan

A.I. bred to S A V Brilliance 8077 on April 17, 2021, then exposed to DMM International 54D from April 27 to May 28, 2021
 Favorable to the A.I. Service

38A GGA Confederation 4J

Male GGA 4J 2209396 04/01/2021

COLEMAN CHARLO 0256
S A V PRESIDENT 6847 2022643
 S A V BLACKCAP MAY 4136

BW	EPDS	CE	BW	WW	YW	MILK
82 lbs.		4.0	1.7	58	98	25

O C C PAXTON 730P
 BOHI ABIGALE 6014
 S A V 8180 TRAVELER 004
 S A V MAY 2397

He ranks in the top 20% of the breed for weaning weight and the top 25% for yearling weight, rib-eye and milk



39A GGA Stetson 18J

Male GGA 18J 2209411 12/01/2021

S A V BRILLIANCE 8077
PVF INSIGHT 0129 1703597
 PVF MISSIE 790

BW	EPDS	CE	BW	WW	YW	MILK
72 lbs.		9.0	0.0	49	89	22

S A V BISMARCK 5682
 S A V BLACKCAP MAY 5270
 P V F NEW HORIZON 001
 P V F MISS RAPTOR 024

He ranks in the top 6% of the breed for rib-eye, the top 7% for maternal calving ease, the top 10% for calving ease and birth weight



GGA Blackbird 20F selected by LLB Angus Farm Ltd., Erskine, AB

GLEN GABEL COMPLETE ANGUS DISPERSAL



She ranks in the top 10 % of the breed for calving ease and maternal calving ease, the top 15% for birth weight and marbling and the top 20% for yearling weight

**Exposed to Brooking Renovation 0160 from April 20 to July 28, 2021
Observed bred on May 1, 2021**

40 **GGA Dixie Erica 12H**
Female GGA 12H 2143510 10/01/2020

SITZ TRAVELER 8180
S A V FINAL ANSWER 0035 1061938
S A V EMULOUS 8145

44 BIG LEAGUE 0257
EXAR DIXIE ERICA 3190 1782196
EXAR DIXIE ERICA 0877

G D A R TRAVELER 71
SITZ EVERELDA ENTENSE 1137
BON VIEW BANDO 598
S A V SKY EMULOUS 2124
B/R NEW DAY 454
BAAR USA LADY JAYE 489
21AR ROUNDUP 7005
J&J DIXIE ERICA 520

BW	EPDS	CE	BW	WW	YW	MILK
82 lbs.		9.0	0.4	55	101	24

41 **JL Ruth 0095**
Female JLMB 95H 2152867 05/02/2020

R R RITO 707
IDEAL 3407 OF 1418 076
S A V 8180 TRAVELER 004
S A V MAY 2397
S A V 8180 TRAVELER 004
S A V MAY 7238
BELL NET RETURN 3U
NORTHERN VIEW RUTH 84S

RITO 707 OF IDEAL 3407 7075
S A V RESOURCE 1441 1707295
S A V BLACKCAP MAY 4136

S A V 004 DENSITY 4336
GGA RUTH 7B 1775113
NORTHERN VIEW RUTH 91X

BW	ADJ 205 WT	EPDS	CE	BW	WW	YW	MILK
98 lbs.	- lbs.		-3.0	5.8	63	121	20



She ranks in the top 4 % of the breed for yearling weight and the top 10% for weaning weight

**A.I. bred to S A V Final Answer 0035 on April 17, 2021, then exposed to Brooking Renovation 0160 from April 27 to July 28, 2021
Favorable to the A.I. service**

GLEN GABEL COMPLETE ANGUS DISPERSAL

She ranks in the top 10 % of the breed for weaning weight, yearling weight and milk and the top 15% for calving ease

A.I. bred to S A V Final Answer 0035 on April 16, 2021, then exposed to Brooking Renovation 0160 from April 27 to July 28, 2021
Favorable to the A.I. service



42 BLAIR'S Blackbird 527H
Female BBC 527H 2145966 25/02/2020

MC CUMBER TREMENDOUS 2008	O C C TREMENDOUS 619T
MC CUMBER TRIBUTE 702 2135467	MISS WIX 2022 HC MC CUMBER
LASSIE 113 OF MC CUMBER	O C C MISSING LINK 830M
JL UPWARD 4058	LASSIE 935 OF MC CUMBER
GGA BLACKBIRD 15D 1903499	SITZ UPWARD 307R
JUSTAMERE 1422B BLACKBIRD 472A	JL JUNE 06 40
	EXAR CLASSEN 1422B
	JUSTAMERE 234R BLACKBIRD 169X

BW	EPDS	CE	BW	WW	YW	MILK
86 lbs.		8.0	1.5	63	109	28

43 SIX MILE Empress 468H
Female SIXM 468H 2172579 21/03/2020

PLAINVIEW LUTTON E102	EXAR LUTTON 1831
S&R ROUNDTABLE J328 1930958	PLAINVIEW PRIDE C123
PVF PROVEN QUEEN 786	BR MIDLAND
DAMERON FIRST IMPRESSION	PVF PROVEN QUEEN 419
OSU EMPRESS 3100 1821260	S A V BRILLIANCE 8077
OSU EMPRESS 0135	DAMERON NORTHERN MISS 3114
	EXAR SPARTAN 6225
	OSU EMPRESS 7165

BW	EPDS	CE	BW	WW	YW	MILK
80 lbs.		6.0	2.6	54	90	27

She ranks in the top 10 % of the breed for milk and the top 20% for rib-eye

Her mother, OSU Empress 3100, is a donor for Six Mile Ranch, Premier Livestock and Hasson Livestock

Exposed to Brooking Renovation 0160 from April 20 to July 28, 2021
Observed bred on May 1, 2021



GLEN GABEL COMPLETE ANGUS DISPERSAL



44

FIRST LINE **Erica 7H**

Female FLA 7H 2141042 03/01/2020

LD CAPITALIST 316
MUSGRAVE 316 COLOSSAL 137 2021884
 MUSGRAVE LADY BARBARA 545

SOO LINE MOTIVE 9016
EDWARDS ERICA 224F 2033728
 EDWARDS ERICA 224D

CONNEALY CAPITALIST 028
 LD DIXIE ERICA 2053
 MUSGRAVE BIG SKY
 MUSGRAVE LADY BARBARA 272
 HF KODIAK 5R
 TLA BEAUTY 5R
 74-51 SUDDEN LOOK 1023
 EDWARDS ERICA 124B

BW	EPDS	CE	BW	WW	YW	MILK
80 lbs.		6.0	1.4	68	114	22

She ranks in the top 8% of the breed for yearling weight and the top 5% for weaning weight

A.I. bred to S A V Rainfall 6846 on April 16, 2021, then exposed to Brooking Renovation 0160 from April 27 to July 28, 2021
 Favorable to the A.I. service

Lot
44



45

RAVENWORTH **Ruby 10H**

Female RAVE 10H 2145306 20/01/2020

SITZ DIMENSION 8607
SITZ LOGIC Y46 1823030
 SITZ FOREVER LADY 612T

K C F BENNETT TOTAL
RAVENWORTH RUBY 6B 1776254
 RAVENWORTH RUBY 4W

SITZ UPWARD 307R
 SITZ EVERELDA ENTENSE 264
 CONNEALY THUNDER
 SITZ FOREVER LADY 63M
 SITZ ALLIANCE 6595
 EXT OF CONANGA 6790
 LINWOOD LAD 18R
 RAVENWORTH RUBY 2S

BW	EPDS	CE	BW	WW	YW	MILK
78 lbs.		7.0	0.0	47	87	24

She ranks in the top 10% of the breed for birth weight and the top 25% for calving ease

Exposed to Brooking Renovation 0160 from April 20 to July 28, 2021

Lot
45



46

GGA **American Pie 26H**

Female GGA 26H 2143535 18/02/2020

SYDGEN ENHANCE
MOGCK ENTICE 2077758
 MOGCK ERICA 2255

CONNEALY FINAL PRODUCT
LOYAL LINE AMERICAN PIE 1775288
 SSF STAND OUT DANNY BOY 5101

SYDGEN EXCEED 3223
 SYDGEN RITA 2618
 MOGCK SURE SHOT 253
 MOGCK ERICA 2162
 CONNEALY PRODUCT 568
 EBONISTA OF CONANGA 471
 G 13 STAND OUT
 SSF BLACKCAP DANNY BOY 3046

BW	PE	CE	BW	WW	YW	MILK
91 lbs.		2.0	1.9	62	116	28

She ranks in the top 8% of the breed for yearling weight, the top 10% for milk and the top 15% for weaning weight

A.I. bred to Deer Valley Growth Fund on April 17, 2021, then exposed to Brooking Renovation 0160 from April 27 to July 28, 2021
 Favorable to the A.I. service

Lot
46

GLEN GABEL COMPLETE ANGUS DISPERSAL

She ranks in the top 10% of the breed for weaning and yearling weights, the top 20% for marbling and the top 25% for milk

Her daughter, GGA Rosebud 27H, sells as lot 48

A.I. bred to Basin Payweight 1682 on April 17, 2021, then exposed to DMM International 54D from April 27 to August 17, 2021 Favorable to the A.I. Service



47

CCCJ Rosebud 96F

Female CCCJ 96F 2055080 09/02/2018

AA R RITO 1163	BROOKS RITO 6220
AA R RITO 6313 1970583	AA R NANCY 6093
AA R BLACKBIRD 9081	AA R TEN X 7008 S A
	AA R BLACKBIRD 27
	SITZ UPWARD 307
TW UPWARD 35X	MAR BLACKCAP 5073
SMW ROSEBUD 20A 1752205	TC FREEDOM 104
SOUTHLAND ROSEBUD 81T	RONAN R ROSEBUD 5J

BW	EPDS	CE	BW	WW	YW	MILK
		4.0	2.7	62	112	25

47A

GGA Rosebud 24J

Female GGA 24J 2209419 24/01/2021

S A V BRAND NAME 9115	S A V BISMARCK 5682
CCCJ FREE STYLE 16B 1800857	S A V BLACKCAP MAY 5530
MVF BARANDA 50X	HF TIGER 5T
	MVF BARANDA 154U

BW	EPDS	CE	BW	WW	YW	MILK
76 lbs.		8.0	0.2	57	100	21

She ranks in the top 10% of the breed for birthweight, the top 15% for calving ease, the top 20% for weaning weight and the top 25% for yearling weight



GLEN GABEL COMPLETE ANGUS DISPERSAL



48

GGA Rosebud 27H

Female GGA 27H 2143536 19/02/2020

LD CAPITALIST 316
MUSGRAVE 316 STUNNER 1995252
 MCATL BLACKBIRD 831-1378

AA R RITO 6313
CCCJ ROSEBUD 96F 2055080
 SMW ROSEBUD 20A

CONNEALY CAPITALIST 028
 LD DIXIE ERICA 2053
 MCATL PURE PRODUCT 903-55
 MCATL BLACKBIRD 1378-573
 AA R RITO 1163
 AA R BLACKBIRD 9081
 TW UPWARD 35X
 SOUTHLAND ROSEBUD 81T

BW	EPDS	CE	BW	WW	YW	MILK
83 lbs.		-1.0	2.7	69	121	25

She ranks in the top 4 % of the breed for weaning and yearling weight and the top 25% for milk

Her mother, CCCJ Rosebud 96F, sells as lot 47

A.I. bred to S A V Rainfall 6846 on April 17, 2021, then exposed to Brooking Renovation 0160 from April 27 to July 28, 2021 Favorable to the A.I. service

Lot 48



49

CCCJ Joyce 1F

Female CCCJ 1F 2041346 26/01/2018

HF KODIAK 5R
SOO LINE MOTIVE 9016 1504907
 TLA BEAUTY 5R

CCCJ FREE STYLE 16B
CCCJ JOYCE 21D 1905533
 PARKWOOD JOYCE 34B

SANDY BAR ADVANTAGE 43M
 WILBAR RUBY 955N
 RR 7407 RAINMAKER 2154
 TERRLENE BEAUTY 35F
 S A V BRAND NAME 9115
 MVF BARANDA 50X
 CONNEALY IMPRINT 8317
 PARKWOOD JOYCE 28W

BW	ADJ 205 WT	EPDS	CE	BW	WW	YW	MILK
- lbs.			5.0	0.9	54	93	20

She ranks in the top 20 % of the breed for birth weight

Her daughter, GGA Joyce 24H, sells as lot 50

Exposed to DMM International 54D from April 14 to August 17, 2021 Observed bred on May 2, 2021

Lot 49



50

GGA Joyce 24H

Female GGA 24H 2143531 02/02/2020

LD CAPITALIST 316
MUSGRAVE 316 STUNNER 1995252
 MCATL BLACKBIRD 831-1378

SOO LINE MOTIVE 9016
CCCJ JOYCE 1F 2041346
 CCCJ JOYCE 21D

CONNEALY CAPITALIST 028
 LD DIXIE ERICA 2053
 MCATL PURE PRODUCT 903-55
 MCATL BLACKBIRD 1378-573
 HF KODIAK 5R
 TLA BEAUTY 5R
 CCCJ FREE STYLE 16B
 PARKWOOD JOYCE 34B

BW	EPDS	CE	BW	WW	YW	MILK
81 lbs.		5.0	1.2	63	108	22

She ranks in the top 10 % of the breed for weaning and yearling weight

Her mother, CCCJ Joyce 1F, sells as lot 49

Exposed to Brooking Renovation 0160 from April 20 to July 28, 2021 Observed bred April 30, 2021

Lot 50

GLEN GABEL COMPLETE ANGUS DISPERSAL



Exposed to DMM International
54D from April 14 to August 17,
2021
Observed bred April 23, 2021

51 BROOKING Royal Lass 8163
Female JSTN 163F 2034943 25/02/2018

S A V HARVESTOR 0338
BROOKING HEIRLOOM 6146 1926669
E A ROSE 918
SOO LINE MOTIVE 9016
BROOKING ROYAL LASS 4055 1812197
WERNER ROYAL LASS 4218
S A V HERITAGE 6295
S A V EMBLYNETTE 7749
S A V FINAL ANSWER 0035
E A ROSE 738
HF KODIAK 5R
TLA BEAUTY 5R
ANKONIAN WERNER WILD FIRE 96
SYDGEN ROYAL LASS 418

BW	EPDS	CE	BW	WW	YW	MILK
		3.0	3.6	53	95	24

51A GGA International 19J
Male GGA 19J 2209412 12/01/2021

S A V INTERNATIONAL 2020
DMM INTERNATIONAL 54D 1922656
DMM BLACKBIRD 105A
S A V HARVESTOR 0338
S A V EMBLYNETTE 5483
GUMBO GULCH CREED 94S
SOUTHERN OX BLACKBIRD 12J

BW	EPDS	CE	BW	WW	YW	MILK
		-3.0	5.8	61	99	28

52 BROOKING Renovation 0160
Male JSTN 160H 2146980 16/02/2020

S A V RENOWN 3439
S A V RENOVATION 6822 1963240
S A V MADAME PRIDE 0151
BSF HOT LOTTO 1401
BROOKING BEAUTY 7022 1989226
TLA BEAUTY 6R
RITO 707 OF IDEAL 3407 7075
S A V BLACKCAP MAY 4136
S A V 004 DENSITY 4336
S A V MADAME PRIDE 0075
BARSTOW CASH
BSF PRINCESS EL CAP W2
RR 7407 RAINMAKER 2154
TERRLENE BEAUTY 35F

BW	EPDS	CE	BW	WW	YW	MILK
80 lbs.		5.0	1.2	56	99	20

He ranks in the top 25% of the breed for weaning and yearling weight

Service sire on the yearling heifers



Semen Packages & Reference Sires

SEMEN AVAILABLE THROUGH BALGONIE ANIMAL BREEDERS

LEROY STEINHUBL AT 306-536-1784. PROOF OF PURCHASE REQUIRED TO HAVE SEMEN RELEASED

87 Units

53A DMM International 54D

Male DMM 54D 1922656 12/02/2016

S A V HARVESTOR 0338
S A V INTERNATIONAL 2020 1724665
 S A V EMBLYNETTE 5483

GUMBO GULCH CRED 94S
DMM BLACKBIRD 105A 1765827
 SOUTHERN OX BLACKBIRD 12J

S A V HERITAGE 6295
 S A V EMBLYNETTE 7749
 S A V 8180 TRAVELER 004
 S A V EMBLYNETTE 7260
 TC FREEDOM 104
 CASSIE OF GUMBO GULCH 58M
 SOUTHERN OX ZULU 26G
 WINDOVER BLACKBIRD 57F

EPDS	CE	BW	WW	YW	MILK
	-4.0	6.3	65	96	33

Birth weight: 92 lbs

He ranks in the top 1% of the breed for milk, the top 3% for rib-eye, the top 5% for carcass weight and the top 8% for weaning weight
 Tremendous show record – 2018 Supreme Champion Farm Fair International, Edmonton, Alberta; Grand Champion Canadian Western Agribition, Regina, Saskatchewan; Olds Fall Classic, Olds, Alberta and Stockade Roundup, Lloydminster, Alberta
 His progeny, semen, and service sells



DMM International 54D

25 Units

53B S A V Final Answer 0035

Male IMP 035K 1061938 22/02/2000

G D A R TRAVELER 71
SITZ TRAVELER 8180 866597
 SITZ EVERELDA ENTENSE 1137

BON VIEW BANDO 598
S A V EMULOUS 8145 US13094078
 S A V SKY EMULOUS 2124

TRAVELER 1148 G D A R
 G D A R MISS BLACKCAP 567
 G D A R RAINMAKER 340
 SITZ EVERELDA ENTENSE 2335
 TEHAMA BANDO 155
 BON VIEW DORA 56
 ELLANIN SKY DIVER
 TAIL N 0383

EPDS	CE	BW	WW	YW	MILK
	13.0	-1.2	56	94	22

Birth weight: 69 lbs

Adj-205 day weight: 843 lbs Adj-365 day weight: 1360 lbs.

He ranks in the top 2% of the breed for calving ease, the top 3% for birth weight, the top 4% for maternal calving ease and the top 25% for weaning weight
 His progeny, semen and service sells



S A V Final Answer 0035

7 Units

53C S A V Pioneer 7301

Male IMP 7301T 1481377 27/02/2007

SITZ TRAVELER 8180
S A V FINAL ANSWER 0035 1061938
 S A V EMULOUS 8145

BOYD NEW DAY 8005
S A V BLACKBIRD 5297 US15108071
 S A V BLACKBIRD 1082

G D A R TRAVELER 71
 SITZ EVERELDA ENTENSE 1137
 BON VIEW BANDO 598
 S A V SKY EMULOUS 2124
 A A R NEW TREND
 S V F FOREVER LADY 57D
 S A F 598 BANDO 5175
 S A V BLACKBID 4036

EPDS	CE	BW	WW	YW	MILK
	6.0	1.7	55	100	26



S A V Pioneer 7301

GLEN GABEL COMPLETE ANGUS DISPERSAL



5 Units

53D S A V 004 **Density 4336**

Male IMP 4336P 1266311 25/03/2004

SITZ TRAVELER 8180
S A V 8180 TRAVELER 004 1421804
 BOYD FOREVER LADY 8003

G D A R TRAVELER 71
 SITZ EVERELDA ENTENSE 1137
 A A R NEW TREND
 S V F FOREVER LADY 57D
 N BAR EMULATION EXT
 LEACHMAN ERICA 0025
 R & J PROSPECTOR 341
 S A R CLASSIC MAY 7278

LEACHMAN RIGHT TIME
S A V MAY 7238 US12819816
 S A R PROSPECTOR MAY 9124

EPDS	CE	BW	WW	YW	MILK
	6.0	3.8	49	88	20

S A V 004 Density 4336



7 Units

53E S A V **Angus Valley 1867**

Male IMP 1867Y 1719214 05/01/2011

TC GRIDIRON 258
S A V IRON MOUNTAIN 8066 1493936
 S A V MADAME PRIDE 3249

G A R GRID MAKER
 TC BLACKBIRD 7049
 S A V 8180 TRAVELER 004
 S A V MADAME PRIDE 8264
 BON VIEW BANDO 598
 S A F ROYAL LASS 1002
 LEACHMAN RIGHT TIME
 S A R PROSPECTOR MAY 9124

S A F 598 BANDO 5175
S A V MAY 2397 US14140872
 S A V MAY 7238

EPDS	CE	BW	WW	YW	MILK
	4.0	0.6	53	100	22

S A V Angus Valley 1867

Lot #A - 7 Units of Semen



4 Units

53F S A V **President 6847**

Male IMP 6847D 2022643 10/01/2016

O C C PAXTON 730P
COLEMAN CHARLO 0256 1829703
 BOHI ABIGALE 6014

O C C FOCUS 813F
 O C C BLACKBIRD 736K
 SITZ TRAVELER 8180
 S A V ABIGALE 6062
 SITZ TRAVELER 8180
 BOYD FOREVER LADY 8003
 S A F 598 BANDO 5175
 S A V MAY 7238

S A V 8180 TRAVELER 004
S A V BLACKCAP MAY 4136 US14739095
 S A V MAY 2397

EPDS	CE	BW	WW	YW	MILK
	2.0	3.6	77	125	21

S A V President 6847

Lot #A - 4 Units of Semen

16 Units

53G

S A V Rainfall 6846

Male IMP 6846D 2013656 09/01/2016

O C C PAXTON 730P
COLEMAN CHARLO 0256 1829703
 BOHI ABIGALE 6014

S A V 8180 TRAVELER 004
S A V BLACKCAP MAY 4136 US14739095
 S A V MAY 2397

O C C FOCUS 813F
 O C C BLACKBIRD 736K
 SITZ TRAVELER 8180
 S A V ABIGALE 6062
 SITZ TRAVELER 8180
 BOYD FOREVER LADY 8003
 S A F 598 BANDO 5175
 S A V MAY 7238

EPDS	CE	BW	WW	YW	MILK
	-4.0	6.3	65	96	33



S A V Rainfall 6846

11 Units

53H

S A V Governor 6844

Male IMP 06844D 2193530 05/01/2016

O C C PAXTON 730P
COLEMAN CHARLO 0256 1829703
 BOHI ABIGALE 6014

S A V 8180 TRAVELER 004
S A V BLACKCAP MAY 4136 US14739095
 S A V MAY 2397

O C C FOCUS 813F
 O C C BLACKBIRD 736K
 SITZ TRAVELER 8180
 S A V ABIGALE 6062
 SITZ TRAVELER 8180
 BOYD FOREVER LADY 8003
 S A F 598 BANDO 5175
 S A V MAY 7238

EPDS	CE	BW	WW	YW	MILK
	6.0	1.7	64	121	29



S A V Governor 6844

6 Units

53I

S A V Seedstock 4838

Male IMP 4838B 1890621 15/01/2014

RITO 707 OF IDEAL 3407 7075
S A V REGISTRY 2831 1830463
 S A V MADAME PRIDE 0075

S A V 8180 TRAVELER 004
S A V BLACKCAP MAY 4136 US14739095
 S A V MAY 2397

R R RITO 707
 IDEAL 3407 OF 1418 076
 S A F 598 BANDO 5175
 S A V MADAME PRIDE 8264
 SITZ TRAVELER 8180
 BOYD FOREVER LADY 8003
 S A F 598 BANDO 5175
 S A V MAY 7238

EPDS	CE	BW	WW	YW	MILK
	0.0	3.5	64	111	17



S A V Seedstock 4838

GLEN GABEL COMPLETE ANGUS DISPERSAL



2 Units

53J

S A V **Eliminator** 9105

Male IMP 9105W 1545531 28/02/2009

R R RITO 707
RITO 707 OF IDEAL 3407 7075 2069908
 IDEAL 3407 OF 1418 076

RITO N BAR
 ERISKAY OF ROLLIN ROCK 3
 IDEAL 1418 OF 8103 4286
 IDEAL 076 OF 692 8375
 BON VIEW BANDO 598
 S A F ROYAL LASS 1002
 BON VIEW EMULATION EXT 473
 CIRCLE A ABIGALE 3008

S A F 598 BANDO 5175
S A V ABIGALE 5646 2068248
 S A V ABIGALE 6062

EPDS	CE	BW	WW	YW	MILK
	-4.0	2.7	56	109	26

S A V Eliminator 9105



8 Units

53K

P V F **Insight** 0129

Male IMP 0129X 1703597 17/04/2010

S A V BISMARCK 5682
S A V BRILLIANCE 8077 1582480
 S A V BLACKCAP MAY 5270

G A R GRID MAKER
 S A V ABIGALE 0451
 S A V 8180 TRAVELER 004
 S A V MAY 2420
 B/R NEW DESIGN 323
 HYLINE ELLEN 410
 DAMERON P V F RAPTOR 702
 P V F MISS STOCKMAN 812

P V F NEW HORIZON 001
P V F MISSIE 790 US15746654
 P V F MISS RAPTOR 024

EPDS	CE	BW	WW	YW	MILK
	4.0	2.1	61	108	24

Birth weight: 84 lbs

Adj-205 day weight: 680 lbs

He ranks in the top 1% of the breed for rib-eye, the top 6% for fat, the top 10% for yearling weight and carcass weight, the top 15% for weaning weight

His progeny, semen and service sells



7 Units

53L

DEER VALLEY **Growth Fund**

Male IMP 7112E 2077827 22/01/2017

BASIN PAYWEIGHT 006S
BASIN PAYWEIGHT 1682 2010588
 21AR O LASS 7017

VERMILION PAYWEIGHT J847
 BASIN LUCY 3829
 HARB PENDLETON 765 J H
 21AR O LASS F24A
 SITZ UPWARD 307R
 BARBARA OF PLATTEMERE 337
 G A R NEW DESIGN 5050
 G A R EXT 614

PLATTEMERE WEIGH UP K360
DEER VALLEY RITA 36113 US17785214
 DEER VALLEY RITA 9457

EPDS	CE	BW	WW	YW	MILK
	10.0	1.1	92	174	29

DEER VALLEY Growth Fund

GLEN GABEL COMPLETE ANGUS DISPERSAL

5 Units

53M

K BAR D Native Joe 32D

Male IMP 0032D 1995171 12/03/2016

SOO LINE ALTERNATIVE 9127W
K BAR D JOE CANADA 18Y US17011364
 MALSONS SAVANNAH 102W

VERMILLION PONY X PRESS
K BAR D WENDY 1010 US17515591
 K BAR D WENDY K1T

HF KODIAK 5R
 TLA ROSEBUD 4R
 S A V 8180 TRAVELER 004
 MALSONS SAVANNAH 51N
 VERMILION X FACTOR
 VERMILLION ERIC 7204
 BR MIDLAND
 DOUBLE BAR WENDY 9A

EPDS	CE	BW	WW	YW	MILK
	3.0	3.2	54	102	15



Saugart

K BAR D Native 32D

28 Units

53N

SOO LINE Motive 9016

Male SOO 16W 1504907 07/01/2009

SANDY BAR ADVANTAGE 43M
HF KODIAK 5R 1274305
 WILBAR RUBY 955N

RR 7407 RAINMAKER 2154
TLA BEAUTY 5R 1296622
 TERRLENE BEAUTY 35F

TC ADVANTAGE
 SANDY BAR JEMINA 44K
 VERMILION YELLOWSTONE
 WILBAR RUBY 161J
 A A R RAINMAKER 7407
 H A CONCEPCIONA 0224
 TERRLENE EXECUTIVE PRIDE 10D
 KBJ BEAUTY 257B

BW	ADJ 205 WT	EPDS	CE	BW	WW	YW	MILK
71 lbs.	781 lbs.		5.0	0.3	47	84	21



J. Morrison

SOO LINE Motive 9016

7 Units

53O

EXAR Declaration 1686B

Male IMP 1686Y 1760637 02/01/2011

O C C EMBLAZON 854E
RITO 6EM3 OF 4L1 EMBLAZON 1695029
 RITA 4L1 OF 2536 208

CONNEALY ONWARD
SITZ HENRIETTA PRIDE 643T US15836552
 SITZ HENRIETTA PRIDE 81M

D H D TRAVELER 6807
 DIXIE ERICA OF C H 1019
 BON VIEW NEW DESIGN 208
 G A R PRECISION 2536
 CONNEALY LEAD ON
 ALTUNE OF CONANGA 6104
 SITZ VALUE 7097
 SITZ HENRIETTA PRIDE 1370

EPDS	CE	BW	WW	YW	MILK
	11.0	0.9	54	100	24



Mark Smedley

EXAR Declaration 1686B

GLEN GABEL COMPLETE ANGUS DISPERSAL



5 Units

53P JUSTAMERE 253 **Bada Bing 406S**
 Male AFA 406S 1332684 03/01/2006

WK GUNSMOKE
EXAR MASTER 253 1180735
 B J BRIDE 909

O G L BATTLE CRY 427 128
 WK BONNIE 2041
 CONNEALY DATELINE
 B J BRIDE 701
 SITZ TRAVELER 8180
 SITZ BARBARAMERE JET 2698
 BCC EILEENMERE LAD 11G
 LLB KEEPSAKE 710F

SITZ ALLIANCE 6595
REMITALL KEEPSAKE 143L 1073514
 REMITALL KEEPSAKE 103J

BW	ADJ 205 WT	EPDS	CE	BW	VW	YW	MILK
80 lbs.	776 lbs.		-3.0	3.5	41	77	26



1 Unit

53Q DAMERON C-5 **American Classic**
 Male IMP 1220Z 1820769 05/04/2012

EXAR LUTTON 1831
EXG RS FIRST RATE S903 R3 US15484543
 RAFTER S BLACKCAP P909

NORTHERN IMPROVEMENT 4480 GF
 EXAR SARAS DREAM 9809
 EXAR EXPAND 1241
 JMS BLACKCAP JM86
 RITO 9FB3 OF 5H11 FULLBACK
 DAVIS PROVEN QUEEN 3026
 N BAR EMULATION EXT
 FINKS 8130 OF 678-549

DAMERON P V F RAPTOR 702
DAMERON NORTHERN MISS 3114 1974435
 DAMERON MISS 550

EPDS	CE	BW	VW	YW	MILK
	2.0	3.6	59	111	19



GLEN GABEL COMPLETE ANGUS DISPERSAL

He ranks in the top 1% of the breed for calving ease, the top 8% for rib-eye, the top 10% for birth weight and maternal calving ease, the top 15% for marbling, the top 20% for weaning weight and fat and the top 25% for milk
Canadian Western Agribition and National Western Stock Show, Grand Champion Bull
His progeny sells



Birth weight: 83 lbs

Adj-205 day weight: 920 lbs. Adj-365 day weight: 1367 lbs

He ranks in the top 1% of the breed for yearling weight and rib-eye, the top 3% for weaning weight, the top 10% for carcass weight and the top 20% for fat

His progeny, and service sells



Birth weight: 82 lbs.

Adj-205 day weight: 1010 lbs. Adj-365 day weight: 1503 lbs

He ranks in the top 2% of the breed for yearling weight, the top 3% for weaning weight and the top 3% for rib-eye

His progeny, and service sells



9th Annual

Harvest

Angus Sale

Consigners

Ravenworth Cattle
Lots 54-55
Garry & Donna Berting
Box 134
Middle Lake, SK S0K 2X0
P: 306-367-2013 C: 306-231-7567
garry@ravenworth.com

Abound Livestock
Lots 56-57
Brian Barnett
Box 2124
Moose Jaw, SK S6H 7T2
306-631-7539
aboundlivestock@sasktel.net

Coulee Crossing
Cattle Company
Lots 58-59
Sandra Jeffery
Box 705 Stn Main
Moose Jaw, SK S6H 4P4
306-693-2215
Sandra: 306-631-1928
couleecrossingcc@gmail.com

Triple H Cattle Co.
Lots 60-61
Perry, Dawn & Cory Hart
Box 334
Cupar, SK S0G 0Y0
306-726-7755
triplehredangus@gmail.com

Edwards Angus
Lots 62-63
Laird Edwards
Box 300
Craik, SK S0G 0V0
C: 306-567-7456
iredwards@sasktel.net

Johnstone Auction Market Moose Jaw, SK - 7:00 pm



This heifer is out of a beautiful Bennett Total Granddam who was an extremely successful donor cow. Both the Granddam and Dam have excellent foot and leg structure. Calving ease is built into this heifer with a 76lbs birth weight. Rave 8G produces thick heifers with an overall stylish look.



54 **RAVENWORTH RUBY 3J**
 Female RAVE 3J 2227744 03/01/2021

S A V REIGN 6845	COLEMAN CHARLO 0256
RAVENWORTH REIGN 8G 2096496	S A V BLACKCAP MAY 4136
ROYAL S PRIDE DOLLY 3B	R A F WIDE WORLD 920
	ROYAL PRIDE DOLLY 46P
SITZ LOGIC Y46	SITZ DIMENSION 8607
RAVENWORTH RUBY 24G 2096574	SITZ FOREVER LADY 612T
RAVENWORTH RUBY 6B	K C F BENNETT TOTAL
	RAVENWORTH RUBY 4W

BW	EPDS	CE	BW	WW	YW	MILK
76 lbs.	-	-	-	-	-	-

55 **RAVENWORTH RUBY 41J**
 Female RAVE 41J 2228675 23/02/2021

S A V REIGN 6845	COLEMAN CHARLO 0256
RAVENWORTH REIGN 8G 2096496	S A V BLACKCAP MAY 4136
ROYAL S PRIDE DOLLY 3B	R A F WIDE WORLD 920
	ROYAL PRIDE DOLLY 46P
CONNEALY THUNDER	BALDRIDGE KABOOM K243 KCF
RAVENWORTH RUBY 23G 2096570	PARKA OF CONANGA 241
LINWOOD RUBY 46T	LINWOOD BRUNO 24R
	LINWOOD RUBY 14N

BW	EPDS	CE	BW	WW	YW	MILK
81 lbs.	-	-	-	-	-	-



Fancy heifer out of a S A V Reign son that we raised and walked. These 8G offspring are performance oriented. Her mother is a Thunder daughter, which goes back to Stevenson Bruno. Longevity is in this cow line, her grandam is still in our herd at 14 years old.



I was once told that if you sell cattle and it hurts your selling the good ones and this statement couldn't be more true for this young heifer. Edge Pride 127J is a model of the type of cattle we want to produce at Abound. She is long spined, big topped, broody but with a good shot of style and stands on a perfect foot. She will no doubt go on to make money in the future. If we were into showing cattle, she would have been on the list to make some miles. Stemming back to Merit 77X on the bottom side and a direct daughter of our senior herd sire Harvestor 66D, she is a no brainer what she will become for the future owner!



56 ABOUND EDGE PRIDE 127J

Female BARN 127J 2196663 17/02/2021

S A V HARVESTOR 0338
BLACK RIDGE HARVESTOR 66D 1953049
 BLACK RIDGE LEONA 22W

MERIT 2102
IVANHOE EDGE PRIDE 31D 1938484
 IVANHOE EDGE PRIDE 46Y

S A V HERITAGE 6295
 S A V EMBLYNETTE 7749
 PEAK DOT PREDOMINANT 135S
 BLACK RIDGE LEONA 22S
 MERIT 77X
 MERIT COUNTESS 6226
 YOUNG DALE T D 58R
 BROOKE'S EDGE PRIDE 1S

BW	EPDS	CE	BW	WW	YW	MILK
93 lbs.		-3.0	4.5	46	82	19

57 ABOUND BLACK LUCY 130J

Female BARN 130J 2197361 28/02/2021

BORDER BUTTE BLASTER 305E
BORDER BUTTE TANNERITE 350G 2100007
 BORDER BUTTE MARION 221E

BLACK RIDGE HARVESTOR 66D
ABOUND BLACK LUCY 912G 2083376
 IVANHOE BLACK LUCY 27B

BRUNS BLASTER
 BORDER BUTTE EVE 70C
 VISION UNANIMOUS 1418
 BORDER BUTTE MARION 84Z
 S A V HARVESTOR 0338
 BLACK RIDGE LEONA 22W
 CRESCENT CREEK 07 EMBLAZON 62W
 IVANHOE BLACK LUCY 11U

BW	EPDS	CE	BW	WW	YW	MILK
83 lbs.		-1.0	4.1	61	104	22

Abound Black Lucy 130J has us watching very closely as she develops and brings a lot of excitement as she is the first progeny to sell from this new sire group here at Abound. Her sire, Border Butte Tannerite 350G was purchased in 2019 and was the high selling bull at the Border Butte sale that year. This Blaster blood line comes packed with a strong maternal pedigree and offspring that has made a strong statement for both the Bosch and Switzer outfits. Combine that with the Black Lucy cow family that brings a lot of femineity, perfect udder quality, and excellent mothering abilities. This heifer comes with a lot of potential and is sure to fit in any operation!





By the popular Coleman Bravo, she is moderate framed, fancy, feminine, and quiet. A very nice hair coat and good feet round out the package. She strides out and hits her mark every time with her back hoof falling in the same spot as her front one, Her dam came out of the U2 dispersal as a calf and has done a very nice job on her first try. The 148G cow has a beautiful udder with adequate milk and good fertility, breeding back for a January calf. Parentage verified and halterbroke.

Lot
58

58 COULEE CROSSING **BLACKBIRD** 30J
Female LJS 30J 2194498 20/01/2019

COLEMAN CHARLO 0256
COLEMAN BRAVO 6313 2065368
COLEMAN DONNA 714

PEAK DOT HONOR 370E
U2 BLACKBIRD 148G 2097031
U2 BLACKBIRD 35E

O C C PAXTON 730P
BOHI ABIGALE 6014
CONNEALY ONWARD
COLEMAN DONNA 386
S A V HONOR 4842
PEAK DOT JUNE 603C
HA PRIME CUT 4493
U-2 BLACKBIRD 24C

BW	EPDS	CE	BW	WW	YW	MILK
- lbs.		9.0	1.2	58	106	24

59 COULEE CROSSING **LUCY** 50J
Female LJS 50J 2201538 24/01/2019

4M ELEMENT 405
ABOUT ELEMENT 908G 2083373
ABOUT LASSIE 722E

SOO LINE YELLOWSTONE 6344
COULEE CROSSING LUCY 20E 1958384
COULEE CROSSING LUCY 10A

POSS ELEMENT 215
4M BLACKBIRD 2004
CRESCENT CREEK RITO 139C
HILOW LASSIE 71A
CUDLOBE YELLOWSTONE 80M
ANGUS GLEN FAVORITE 9N
S A V FREE SPIRIT 8164
WILBAR LUCY 244R

BW	EPDS	CE	BW	WW	YW	MILK
- lbs.		2.0	3.7	57	102	21



By the high selling bull from About Livestock in the spring of 2020, she is quiet with volume, length, depth of body and great feet. Her dam comes from my first ever Angus purchase Wilbar Lucy cow family. The Lucy family just flat out works. She has length of spine and gets out and hits her mark every time as well. Parentage verified and halterbroke.

Lot
59

A real flashy, phenotypically correct powerhouse. She is a maternal sibling to HRA Intuition 14B, our main herd sire for many years. The first daughter out of 302Z we have ever offered. The rest are in the herd.

AI bred to Soo Line Motive April 25, 2021
Pasture exposed to Edwards Colossal 153H May 10- July 25, 2021

Preg checks favourable to AI



60 TRIPLE H ND QUEEN 45H

Female HRA 45H 2161239 05/03/2019

HOOVER NO DOUBT
PEAK DOT NO DOUBT 307F 2023978
 PEAK DOT BARBARA 7C

HOOVER DAM
F V HD QUEEN 302Z 1691738
 F V QUEEN NW 19X

MOGCK BULLSEYE
 MISS BLACKCAP ELLSTON J2
 BUSHSEASYDECISION98
 BARBARA OF PEAK DOT 880Y
 SYDGEN C C & 7
 ERICA OF ELLSTON C124
 S A V NET WORTH 4200
 F V 12U QUEEN 320S

BW	EPDS	CE	BW	WW	YW	MILK
- lbs.		2.0	3.9	68	121	23

61 TRIPLE H FT LINDA 54H

Female HRA 54H 2161290 07/03/2019

PA FORTITUDE 2500
TRIPLE H FORTITUDE UP 11E 1977916
 TRIPLE H LINDA 25C

YOUNG DALE EDGAR 43X
IVANHOE LINDA 20A 1763480
 IVANHOE LINDA 31X

GAR-EGL PROTEGE
 G G CLARA 0171
 GTBLACKUP93A
 IVANHOE LINDA 20A
 S A V 004 TRAVELER 7758
 YOUNG DALE ELBA 77U
 YOUNG DALE T D 58R
 IVANHOE LINDA 35P

BW	EPDS	CE	BW	WW	YW	MILK
- lbs.		3.0	2.3	50	88	24

Simply put, this girl is powerful. Long deep and wide hiped. Her Dam, 20A, is still going strong for us and 54H might be her best yet. She checks a lot of boxes.

AI bred to Musgrave Colossal May 4, 2021
Pasture exposed to Edwards Colossal 153H May 10 - July 25, 2021
Preg checks favourable to AI





Edwards Lady Rito 439H is a direct daughter off my herd bull Young Dale Fast Trac 40F. Fast Trac 40F passed on his impeccable foot shape, bone, performance and maternal strength into EDW 439H. The most intriguing part of this heifer is the mating to the new up and coming breed sensation Chestnut Turning Heads 29G

AI'd April 16 and safe to Chestnut Turning Heads 29G



62 EDWARDS **LADY RITO** 439H
Female EDW 439H 2170429 01/03/2019

YOUNG DALE HI DEFINITION 185B
YOUNG DALE FASTRAC 40F 2058033
YOUNG DALE BLACKBIRD 44A

PEAK DOT GLADIATOR 800Y
EDWARDS LADY RITO 439C 1846550
JUSTAMERE LADY RITO 839W

PF HOOVER DAM 041
BLACK HAMCO COUNTESS 417T
YOUNG DALE XCALIBER 32X
YOUNG DALE BLACKBIRD 69W
S A V ELIMINATOR 9105
ANNIE K OF PEAK DOT 533U
MCATL TRIPLE STACK
EXAR LADY RITO 3203

BW	EPDS	CE	BW	WW	YW	MILK
82 lbs.		4.0	2.3	53	95	21

63 EDWARDS **PRIME BEAUTY** 332H
Female EDW 332H 2147032 28/01/2019

BROOKING BANK NOTE 4040
BROOKING FIREBRAND 6068
BROOKING ANNIE K 390

S A V HARVESTOR 0338
EDWARDS PRIME BEAUTY 332B 1776099
EDWARDS PRIME BEAUTY 132W

CONNELLY EARNAN 076E
E A ROSE 918
SAVBEST INTEREST 0136
SOO LINE ANNIE K 9165
S A V HERITAGE 6295
S A V EMBLYNETTE 7749
DUFF NEW ATTRACTION 6110
ISLA BANK PRIME BEAUTY 32J

BW	EPDS	CE	BW	WW	YW	MILK
88 lbs.		2.0	3.3	61	98	23



Edwards Prime Beauty 332H is a easy doing soft made, eye appealing Brooking Firebrand daughter. I truly love the frame, shape and style of this heifer. The Firebrand X Harvester combination has worked well for me and they are the kind I am striving to produce. AI'd to the high selling outcross bull in the 2020 Young Dale bull sale, Young Dale Gladiator 120G (Young Dale Jullian X Young Dale Grace)

AI'd May 30 and safe to Young Dale Gladiator 120G

NOTES

Terms & Conditions

TERMS...

The terms of the sale are cash or cheque, payable at par at the sale location. The right of property shall not pass until after settlement has been made; no invoicing on buyers in attendance, unless previous arrangements have been made. Every animal sells to the highest bidder and in cases of disputes, the auctioneer's decision will be final. Current exchange rates will be announced sale day. All monies are in Canadian funds.

BIDDING...

Each animal will sell to the highest bidder... no by-bidding will be permitted. Disputes - Bidding will be reopened between the parties involved in dispute. If no further bidding is made, the buyer will be the person from whom the auctioneer accepted the last bid. The auctioneer's decision on all disputes will be final.

ANNOUNCEMENTS...

All announcements made from the auction block will take precedence over the printed matter in the catalogue. Buyers are therefore cautioned to pay close attention to such disclosures.

BREEDER'S GUARANTEE...

As this is a dispersal sale, all cattle sell with no further guarantee. Any known defects will be announced before the cattle are sold.

PREGNANCY INFORMATION:

All serviceable age females have been pregnancy examined by an accredited veterinarian, giving an estimated length of gestation. This estimated gestation period shall be used only as a guideline to calving and is not a guarantee of actual service.

CERTIFICATE OF REGISTRATION...

Each animal will carry papers issued by the Canadian Angus Association. A certificate of registry duly transferred will be furnished to the buyer for each animal after payment has been made.

PEDIGREE ESTIMATES...

Pedigree Estimates (PE) are created on the projected mating of the animal's sire and dam based on averages of the two, creating estimated values that do not hold the same accuracy of actual EPDs issued from the association and should be used as such.

LIABILITIES...

All persons attend the sale at their own risk. The seller, facility owner and sale manager assume no liability, legal or otherwise, for any accidents that occur. It is understood that T Bar C Cattle Co. (2013) Ltd. is acting only as a medium between buyer and seller and is not responsible for any failure on the part of either party to live up to his obligations. Neither does T Bar C Cattle Co. (2013) Ltd. assume any financial obligations to collect or enforce collection of any monies between parties and any legal action that may in exceptional cases be taken must be between the buyer and the seller. T Bar C Cattle Co. (2013) Ltd. assumes no responsibility for any credit extended by the seller to the buyer. The buyer must look to the seller for fulfillment of all guarantees and representations made hereunder.

RIGHTS AND OBLIGATIONS...

The above terms and conditions of the sale shall constitute a contract between the buyer and seller and be equally binding to both. Resale of animals following purchase in this sale shall constitute a separate transaction and the rights and obligations of the two parties connected thereto are not covered by the terms and conditions of this sale.

PHONE, MAIL, WIRE BIDS...

Bidders unable to attend the sale may phone, mail or wire their bids and instructions to the sale managers, auctioneer or special representatives. Bids must be received in sufficient time prior to the sale.

DELIVERY...

Assistance will be given in getting your purchases home. Each animal becomes the risk of the purchaser as soon as sold.

INSURANCE...

Will be available sale day. We strongly recommend that insurance is purchased for full value.

ERRORS...

All announcements at sale time, written or oral, supercede any written material in the catalogue.

Return Undeliverable
Canadian Addresses To:
T Bar C Cattle Co. Ltd.
Box 2330
Warman, SK S0K 4S0



Created by
Today's
Publishing