



CITY VIEW SIMMENTALS & **ABOUND LIVESTOCK**

With Guests Sunnyside Simmentals & Gold-Bar Livestock

12th

TUESDAY, MARCH 22, 2022, Sale Time 1 pm
JOHNSTONE AUCTION MART, Moose Jaw, SK

ANNUAL BULL SALE

City View Simmentals and Abound Livestock 12TH ANNUAL BULL SALE

With Guests Sunnyside Simmentals & Gold-Bar Livestock

Tuesday, March 22, 2022, Sale Time: 1PM CST

Sale Location : Johnstone Auction Mart

Moose Jaw, Saskatchewan

4 miles west of Moose Jaw on the Trans Canada highway.

Monday 5:00 p.m.

View the bulls, enjoy refreshments and pizza.

Tuesday Lunch at 12:00 p.m.

Sale at 1:00 p.m.



WATCH AND BID ONLINE

Create your Bidding Account with DVAuction!

- Go to www.dvauction.com and click on "Create New Account".
- Fill in all fields and accept the Privacy Policy & Terms and Conditions. Click on Create New Account.
- On the next screen, click Apply for Bidding.
- Choose Option 1) Credit Card Approval or Option 2) Bank Approval
- * if you are not comfortable providing this info to DVAuction, that is ok! Call Sarah Hasson at 306-681-5340
- Check your Email for an Account Activation message from DVAuction. Click this link and you are all ready to go.
- On sale day, log in to www.dvauction.com with your email address and password.
- Click the green "View" button beside the 11th Annual Cityview/Abound Livestock & Friends Bull Sale. This will take you to the sale site.
- Accept the Terms & Conditions (left side of screen) to get your bid button.
- Log in 1 hour before sale time to Practice Bidding.
- Let us make it even easier for you! Contact Sarah Hasson at 306-681-5340 to get set up over the phone.
- DVAuction Tech Support 402-316-5460

TERMS AND CONDITIONS:

The terms of the sale are cash or cheque. All settlements must be made with the clerk following the sale before any cattle will be released.

Disputes: Bidding will be re-opened between the parties involved in the dispute. If no further bids are made, the buyer will be the person from whom the auctioneer accepted the last bid. The auctioneer's decision on all disputes will be final.

ANNOUNCEMENTS:

All announcements made from the auction block will take precedence over the printed material matter in the catalog. Buyers are therefore cautioned to pay attention to such disclosures.

ACCIDENTS:

Although every precaution will be taken to protect the safety and comfort of the buyers, neither the owner, the auctioneer of Association assumes any responsibility in this matter and disclaims any liability, legal or otherwise, in the event of accident or loss of property.

SALE DAY PHONES

Johnstone Auction Mart	306-693-4715
Blaine Barnett	306-631-6618
Brian Barnett	306-631-7539
Joe Barnett	403-465-2805
Tina Barnett	306-631-5183
Lisa Martin	306-684-5884
Tom Turnbull	306-527-6624
Aaron Birch	403-485-5518
Brad Buchanan	306-513-7119
Sarah Hasson	306-681-5340

SALE STAFF

Auctioneer, Scott Johnstone	306-693-4715 (business)
.....	306-631-0767 (cell)
Ringman, Nate Marin	306-869-7130 (cell)
Ringman, Don Oberg	780-678-6926 (cell)
DV Auction, Sarah Hasson	306-681-5340 (cell)

FERTILITY

All bulls will be semen tested prior to the sale.

IN-HERD SEMEN

We reserve the right to collect semen on any bull in the offering at our expense and your convenience.

PHONE BIDS/SIGHT UNSEEN:

We hope you can visit the farm before the sale to make your selection or come early to Johnstones. If you can't make it, give us a call to discuss what you're looking for. If we have talked before, your satisfaction is guaranteed. Online bidding and videos will be available on dvauction.com

PRE-SALE MEAL:

Join us for pizza Monday night at 5, and lunch on Tuesday at noon.

GUARANTEE:

All bulls sell under the terms and conditions of sale as recommended by the Canadian Simmental and Angus Associations.

INSURANCE:

We strongly recommend insuring your purchases sale day. See Larry Toner of Stockman's Insurance at the sale. 306-834-7652

DELIVERY

Bring your trailer sale day and we'll deduct \$100.00 per bull from the purchase price or bulls can return to the farm until April 15. Bulls will be delivered free of charge up to 300 km from Moose Jaw at the seller's convenience as soon as possible following the sale. Other destinations can be arranged between the buyer and seller. Buyers are encouraged to insure their purchases.

Give us a call if you have any questions. We always do our best to work with you within reason.

Thank You!

TO OUR 2021 BUYERS

TREVOR BENSON & BONNIE
BRANDT
BOISVERT SIMMENTAL
MAPLE POINT RANCH
LLOYD & SYLVIA FOX
RYAN BULL
MARTIN & JESSE HIPPERT
SPRINGWATER RANCH LTD
SUNNYSIDE SIMMENTALS
JASON LASOTA
RICHARD & BONNIE CLUBBE

CYPRESS FARMS LTD
RAFTER C RANCH
CLIFF BARNETT
LABATTE SIMMENTALS
BULL FAMILY FARM
MADER RANCHES
K G MCLAREN FARMS LTD
CIRCLE 7 SIMMENTALS
SUN STAR SIMMENTALS
OH KAY FARMS
DUNMAC FARMS

JACOB CARROBOURG
TL FARMS INC
LACEY MCNUTT
MARK & DIANE FERRARA
T & P ANTHONY FARMS
ROY & PAM KIRBY
EXCEL GRAZING CORP
JERRAD SCHOLLAR
MARK & BOBIE DEAN
SHILOH CATTLE COMPANY
BORDER BUTTE ANGUS





City View Simmentals



Welcome to our 12th annual Bull Sale. We'd like to thank all our previous customers for their support in the past and look forward to working with everyone once again. As we look back on 2021 with the extra pressure that ranchers and cattlemen had to face with feed shortages and limited quality water to supply their cattle, the strength, creativity and resilience shown by producers to supply a quality product to the consumer need not be unnoticed, when the going gets tough the tough gets stronger. With that being said we need to look forward to what once can only hope is record calf prices, adequate run off and sufficient feed stocks.

Running top quality bulls has never been more important to potentially increase your profit margin. It's been proven time and time again that using quality genetics to increase weaning weights and uniformity in a calf crop will add to your bottom line.

We are very proud of the group of bulls we have assembled this year, the full blood bull section may not be huge in numbers but the quality is very impressive. On the red side, the Tycoon sons will be very welcomed by producers for their dark color and strong foot. Our walking herd sire TJT 2F or "Tom" as we call him he has done a great job siring good footed, easy moving calves. Our black numbers are smaller than the previous years but not lacking in thickness, length and muscle. If you are looking for some red bulls with the money stripe we have those available too.

Our bulls are pair fed a 14% textured ration from Trow Nutrition along with our own brown oats. Jessica Hexall of Trow takes great pride in her job and is great to work with. The bale feeders are always full of an alfalfa/ brome hay. Our bulls are kept in a very large pen with lots of room to move and maintain their athletic ability and build muscle. Our goal is to breed and feed these bulls to maintain foot quality and longevity. The bulls are on a whole herd health program with Zoetis and have been given Ivomec.

We'd like to welcome our friends from Gold Bar livestock Sarah Hasson and Brad Buchanan with their Angus bulls to compliment the Abound Livestock program, Brian and Lisa have done an excellent job in a short time assembling a group of cows that any breeder would be proud to have, following their vision. Sunny Side Simmentals, Tom and Sharon are once again consigning to the sale, all though it's only one bull this year, he's a good rascal and we're looking forward to an increase in numbers next year.

Aaron and Joe have once again been tremendous supporters over the year whether it's on the show road last fall, picturing, videos and helping assemble the sale catalogue. We'd also like to give a shout out to our part time hired man and great friend Johannes, having his help allows us to "hit the show road" each fall and pursue our dreams. Once again Pittman Print Media is putting their expertise forward and designing the book, Thank you all!!

We really want to encourage everyone to stop by the farm anytime prior to the sale and spend some time touring the bulls and their moms, We're proud of what we've accomplished in the past 22 years of being a seed stock producer.

Follow our facebook page for updates and videos. The catalogue and videos will also be on DV Auction and Johnstone's website. We welcome everyone to come for pizza and refreshments on Monday night before the sale. It's a perfect opportunity for a one on one visit with us.

In closing, we'd like to take this opportunity to thank our previous customers and look forward to meeting with all new customers. It's an industry we're proud to be a part of and spend our time focusing on. We're not new at this, we are proud of our cows and the work they do for us. Come take a look I'm sure you'll be impressed. See you at the sale.

*The Barnetts
Blaine and Tina, Brody & Addison*



1

CITYVIEW JEREMY 3J

CA-1353345 / CVBB 3J / Red / Dehorned / Fullblood / Jan 2, 21

HOMESTEAD-T GRAPHITE 304C	Act BW: 63				
AJB POLLED GRAPHIX 68G	Adj WW: 653				
AJB LADY BARON 16Z	Adj YW: 1173				
BLACK GOLD EPIC 14Z					
ANCHOR D / CD KALISTA 263F					
ANCHOR D KAEL 255C					
CE 8.8	BW 2.5	WW 66.1	YW 96.6	Milk 41.3	MCE 5.4

LOT 1

2

CITYVIEW JUDGE 4J

CA-P1353347 / CVBB 4J / Red / Polled / Fullblood / Dilutor Free / Jan 2, 21

HOMESTEAD-T GRAPHITE 304C	Act BW: 68				
AJB POLLED GRAPHIX 68G	Adj WW: 703				
AJB LADY BARON 16Z	Adj YW: 1226				
BLACK GOLD EPIC 14Z					
ANCHOR D / CD KALISTA 263F					
ANCHOR D KAEL 255C					
CE 8.8	BW 2.5	WW 66.1	YW 96.6	Milk 41.3	MCE 5.4



LOT 2

City View Judge and Jeremy are twin brothers from our Kalista donor cow. We purchased her through Friday Night Lights and she has quickly made a splash here! Her first set of ET sons sold last year including the \$35000 high seller to Boisvert Simmental in Quebec as well as others to Trevor Benson & Bonnie Brandt and Cliff Barnett. We have also kept a maternal sister who looks very promising. Jeremy and Judge are designed much the same in terms of their muscle pattern, deep red colour and ideal disposition. Lot 2, Judge is polled and non-dilutor while Lot 1, Jeremy is horned. They come from the first calf crop of our new Graphix bull from the AJB program.



Dam of Lot 1 & 2 Granddam of Lot 1 & 2 Brother of Lot 1 & 2

Thank You!



Thank you to Boisvert Simmental for purchasing CITYVIEW GOLD TRIGGER 76H as the high seller in last year's sale



Thank you to Circle 7 Simmentals for purchasing CITYVIEW HAWAII 37H as the high seller in Red & Black



Thank you to Mader Ranches for purchasing CITYVIEW JEWEL 66J in Friday Night Lights



RS

AJB POLLED GRAPHIX 68G

P1271185 / AJB 68G / Red / Polled / Purebred / Mar 2, 19

ALLM COLOSSAL 25U
HOMESTEAD-T GRAPHITE 304C
 BHR BARON SA 2842P
 AJB MISS STRIDE 110W
AJB LADY BARON 16Z
 AJB MISS STRIDE 110W

Act BW: 85
 Adj WW: 839
 Adj YW: 1514

CE 10.8 BW 2 WW 62.5 YW 86.4 Milk 40.7 MCE 5.4

RS

As our fullblood cow numbers increased we felt it was time to add a walking herd bull to the mix. Cow power and structure were must haves while polled and pigmented were bonuses. We found all the bells and whistles in Amy Bonchuck's offering with AJB Polled Graphix 68G. This first group of calves has us excited for all he brings to the table. He has a highly maternal pedigree and beautiful mother cow combined with an elite foot structure. He's proving to offer plenty of calving ease and we can't wait to see his daughters come into production.



3

CITYVIEW JAMES 105J

CA-P1353935 / CVJB 105J / Red / Polled / Fullblood / Dilutor Free / Jan 28, 21

HOMESTEAD-T GRAPHITE 304C
AJB POLLED GRAPHIX 68G
 AJB LADY BARON 16Z
 LRX ROCKET 51B
CITYVIEW TARA 640D
 CITYVIEW YEZIDEE 15Y

Act BW: 94
 Adj WW: 650
 Adj YW: 1157

CE 8.3 BW 2.4 WW 58.7 YW 83.9 Milk 40 MCE 4



Grandsire of Lot 3

- Top 10% for milk, polled and non-dilutor (no greys)
- Double goggle eyes, deep red, good footed
- Maternal sister in herd, goes back to our Tara cow family who are consistently good cows



4

CITYVIEW JONAS 103J

CA-PG1353934 / CVBB 103J / Red / Polled / Jan 27, 21

HOMESTEAD-T GRAPHITE 304C
AJB POLLED GRAPHIX 68G
 AJB LADY BARON 16Z
 KOP REVOLVER 116Z
BLI CRANBERRY 508C
 DIAMOND LADY XPRESSO 61X

Act BW: 104
 Adj WW: 756
 Adj YW: 1220

CE 5.8 BW 5.5 WW 81.6 YW 113 Milk 36.1 MCE 2.9



Dam of Lot 4



Brother to Lot 4

- An ideal mix of fleck maternal power and the function of the red cattle baldie package
- Larger frame, long bodied, black hooped, quiet disposition
- Maternal sister calving in herd and we used a maternal brother on heifers

5

CITYVIEW JUSTICE 82J

CA-PT1354002 / CVBB 82J / Red / Polled / Fullblood / Dilutor Free / Jan 23, 21

VIRGINIA MAXIMUS
ANCHOR D RAPTOR 392C
 ANCHOR D ZILEY 392Z
 FGAF FRENCH ATTACK 010C
IPU 29B MS FRENCH ATTACK 44F
 LAKEVIEW MS ECLEC 29B PFF

Act BW: 100 ET
 Adj WW: 746
 Adj YW: 1346

CE 8.3 BW 2.7 WW 83.2 YW 121.2 Milk 34 MCE 3.9



Dam of Lot 5-7



LOT 5

6

CITYVIEW JUG HEAD 104J

CA-PT1354006 / CVBB 104J / Red / Polled / Fullblood / Dilutor Free / Jan 27, 21

VIRGINIA MAXIMUS
ANCHOR D RAPTOR 392C
 ANCHOR D ZILEY 392Z
 FGAF FRENCH ATTACK 010C
IPU 29B MS FRENCH ATTACK 44F
 LAKEVIEW MS ECLEC 29B PFF

Act BW: 102 ET
 Adj WW: 791
 Adj YW: 1244

CE 10.2 BW 4.6 WW 77.1 YW 110 Milk 34 MCE 5.2



Sire of Lot 5-7



LOT 6

7

CITYVIEW JOURNEY 100J

CA-T1354004 / CVBB 100J / Red / Dehorned / Fullblood / Dilutor Free / Jan 26, 21

VIRGINIA MAXIMUS
ANCHOR D RAPTOR 392C
 ANCHOR D ZILEY 392Z
 FGAF FRENCH ATTACK 010C
IPU 29B MS FRENCH ATTACK 44F
 LAKEVIEW MS ECLEC 29B PFF

Act BW: 102 ET
 Adj WW: 723
 Adj YW: 1259

CE 8.3 BW 3.2 WW 78.3 YW 112.2 Milk 34 MCE 3.9



Sister to Lots 5-7



LOT 7

An intriguing set of flush mates from our French Attack donor. We loved her the first time we saw her at Simmsational and she's really come into her own as a maturing mother cow. She has a beautiful udder with great teat placement. We sold a full sister to these bulls in December at Fleck Equation to Labatte Simmentals who we have so much respect for. Fleck bulls with a little more colour like these guys are getting tough to come by. This type of bull has proven their value time and time again in our industry. They make high dollar steers and ideal mother cows with unlimited cross breeding potential. Justice 82J and Jug Head 104J are polled, non dilutor, goggled eyed bulls while Journey 100J is horned. If you run multisire breeding groups, take a close look at these impressive brothers.



CITYVIEW JUNIOR 86J

CA-P1353884 / CVBB 86J / Red / Polled / Fullblood / Dilutor Free / Jan 24, 21

DOUBLE BAR D MAESTRO 100S	Act BW: 97
ANCHOR D VIPER 103W	Adj WW: 749
PRL LOPEZ 147L	Adj YW: 1242
STARWEST POL BLUEPRINT	
SOUTHAM'S FRESCA 18F	
BIG SKY CANTARA 93C	
CE 5.1	BW 3.8
WW 71.3	YW 107.4
Milk 37.5	MCE 4.9



Dam of Lot 8



Sire of Lot 8

LOT 8

- Top 15% for milk, polled and non-dilutor (no greys)
- A potent fullblood pedigree - his daughters will be excellent cows
- Moderate framed, long bodied, well muscled and good footed



CITYVIEW JETER 102J

CA-PG1353930 / CVBB 102J / Red / Polled / Jan 27, 21

JNR STEELE 248Z	Act BW: 88
JNR'S TITANIUM	Adj WW: 777
MFI LOLITA 8050	Adj YW: 1225
HARVIE RED SUMMIT 54B	
CITY VIEW TAKALA 14G	
CITY VIEW TAKALA 645D	
CE 11.2	BW 2.4
WW 81.2	YW 111.8
Milk 30.6	MCE 5.6



Sire of Lot 9

LOT 9

- Heifer approved! Top 15% for CE, an 88lb BW and off a first calf heifer
- Desirable red baldie with high percentage fleck influence - the first cross between red and fleck cattle has always worked so well
- Exceptional EPD profile



HARVIE RED SUMMIT 54B

CA-PG801201 / HAR 54B / Red / Polled / Feb 8, 14

IPU RED WESTERN 49X	Act BW: 88
KWA FLYF RED MOUNTAIN 16Z	Adj WW: 845
KWA MS ROCK 14X	Adj YW: 1501
HARVIE JDF WALLBANGER111X	
HARVIE DAKOTA ROSE 11Z	
WS DAKOTA ROSE M86	
CE 10.6	BW 1.5
WW 93	YW 150.6
Milk 22.1	MCE 4.3



Daughter of Red Summit

RS

Red Summit has been a trusted standby in our breed for a number of years now. He gained popularity after becoming Supreme Champion at Farmfair in 2016. He has proven to be heifer safe without compromising growth and power. He has also been effective in adding stretch and frame to some more moderate framed females.

10

CITYVIEW JUDD 48J

CA-BPG1353826 / CVBB 48J / Black / Homozygous Polled / Jan 14, 21

KWA FLYF RED MOUNTAIN 16Z

Act BW: 99

HARVIE RED SUMMIT 54B

Adj WW: 704

HARVIE DAKOTA ROSE 11Z

Adj YW: 1277

HARVIE BOONDOCK 12Z

CITY VIEW 127T RAVEN 566C

3D MISS BLK RAVEN 127T

CE 7.7

BW 3.3

WW 80.9

YW 122

Milk 27.4

MCE 2.8



Dam of Lot 10



Sister of Lot 10



LOT 10

- Above average EPD profile for calving ease and performance traits
- Larger frame, deep ribbed, good footed and wide topped
- Maternal bother to Mark & Susan Lenz, a maternal sister was used here as a 4-H project in 2021 and another daughter sold to Rose Hill Simmentals
- Dam is a direct daughter of 127T donor cow, identical pedigree to lot 11

11

CITYVIEW JERICHO 99J

CA-BPG1353920 / CVBB 99J / Black / Homozygous Polled / Jan 26, 21

KWA FLYF RED MOUNTAIN 16Z

Act BW: 97

HARVIE RED SUMMIT 54B

Adj WW: 716

HARVIE DAKOTA ROSE 11Z

Adj YW: 1297

HARVIE BOONDOCK 12Z

CITY VIEW 127T RAVEN 477B

3D MISS BLK RAVEN 127T

CE 8.2

BW 2.9

WW 84.1

YW 127.3

Milk 27

MCE 0.8



Granddam of Lot 10, 11 & 16



Brother to Lot 11



LOT 11

- Top 20% WWT & YWT, homozygous polled and hetero black
- Strong top lined, moderate framed, long bodied with a good hair coat
- Maternal brothers sold to Jacob Carrobourg and Rafter C Ranch
- An identical pedigree to lot 10, mothers are flushmates

12

CITYVIEW JACKSON 91J

CA-PG1353899 / CVJB 91J / Red / Homozygous Polled / Jan 25, 21

KWA FLYF RED MOUNTAIN 16Z

Act BW: 106

HARVIE RED SUMMIT 54B

Adj WW: 702

HARVIE DAKOTA ROSE 11Z

Adj YW: 1220

CMS UNIVERSE 838U

CITY VIEW YAFFINGALE 8Y

CITY VIEW WATCH ME 2W

CE 4.1

BW 5.8

WW 84.6

YW 127.7

Milk 24.7

MCE 2.5



Granddam of Lot 12



Brother to Lot 12



LOT 12

- Homozygous polled red baldie, larger framed, long bodied bull, in the Top 20% WWT & YWT
- Dam still in producing in herd with an outstanding udder
- A maternal brother sold to the Clubbe's and a maternal sister raised lot 18
- A bull far better than his picture



RS

SVS TYCOON 841F

CA-PG1235896 / TLAS 841F / Red / Polled / Purebred / Jan 15, 18

MRL RED WHISKEY 101B

Act BW: 103

SVS BROOKS 669D

Adj WW: 957

SVS RED SARA 92X

Adj YW: 1594

ACS EVERREADY 970W

SVS RED ANNIE 411B

3D MISS RED NOREMAC 211U

CE 4.9 BW 4.3 WW 104.1 YW 154.4 Milk 30.1 MCE 0.2



Daughter of Tycoon



Daughter of Tycoon

This is our second set of Tycoon offspring and we love them more all the time! He was a \$75000 highlight through the Sunny Valley Sale and continues to gain much deserved popularity in the breed. We love how soft made and sound his calves are. They show a lot of early performance and are hairy with plenty of style. We've got a large group of Tycoon daughters including some who are milking for the first time now. They are impressive just like these bulls are!



LOT 13

CITYVIEW JAX 30J

CA-PG1353726 / CVBB 30J / Red / Homozygous Polled / Jan 08, 21

SVS BROOKS 669D

Act BW: 85

SVS TYCOON 841F

Adj WW: 712

SVS RED ANNIE 411B

Adj YW: 1253

SOUTHSEVEN SHERIFF 41D

CITY VIEW DEMI 69F

BERWEST DEMI 632D

CE 6.9 BW 3.4 WW 92.6 YW 140.1 Milk 31.9 MCE 2.8

- Top 4% WWT & YWT with an above average milk EPD and homozygous polled
- Deep red, good disposition, long body, small head and clean fronted
- He is well balanced and has the look of a long lasting herd bull



LOT 14

CITYVIEW JEROME 73J

CA-PG1353856 / CVBB 73J / Red / Polled / Jan 20, 21

SVS BROOKS 669D

Act BW: 83

SVS TYCOON 841F

Adj WW: 640

SVS RED ANNIE 411B

Adj YW: 1261

LRX ROCKET 51B

CITY VIEW TAKALA 22E

GREEN SPRUCE TAKALA 10T

CE 6.1 BW 3.5 WW 86.8 YW 137.4 Milk 29.5 MCE 2.7



Granddam of Lot 14



Brother to Lot 14

- Attractive and valuable baldie with a shot of fleck in the pedigree
- Smooth fronted, long bodied with a good disposition and the volume typical of Tycoon offspring
- Balanced set of EPD's and check out the milk #

13

14

Lot 15

- An extremely complete package! Deep cherry red baldie, structurally sound and homozygous polled
- Garnered a lot of attention on the show road last fall winning his class at Farmfair and Agribition.
- Top 10% of the breed for WWT & YWT
- Full sister topped Red & Black last fall to Circle 7 Simmentals and we have a maternal sister



Left: Granddam of Lot 15
Right: Full sister to Lot 15

15

CITYVIEW JYNX 46J

CA-PG1353822 / CVJB 46J / Red / Homozygous Polled / Jan 14, 21

[SVS BROOKS 669D	Act BW: 92
	SVS TYCOON 841F	Adj WW: 691
	SVS RED ANNIE 411B	Adj YW: 1246
	MRC BROKER 6Z	
	CITY VIEW UNIQUE 620D	
	CITY VIEW TEAR JERKER 18T	

CE 4.6 BW 3.9 WW 87.8 YW 134 Milk 29.7 MCE -1.8

16

CITYVIEW JUMA 76J

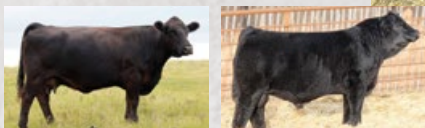
CA-BPG1353861 / CVBB 76J / Black / Homozygous Polled / Jan 21, 21

[SVS BROOKS 669D	Act BW: 90
	SVS TYCOON 841F	Adj WW: 709
	SVS RED ANNIE 411B	Adj YW: 1266
	HARVIE BOONDOCK 12Z	
	CITY VIEW RAVEN 656D	
	3D MISS BLK RAVEN 127T	

CE 6.7 BW 3.2 WW 84.2 YW 120.8 Milk 31.5 MCE 1.3

Lot 16

- Deep and thick from front to back, heavily muscled hind quarter
- Balanced set of EPD's and homo polled
- Good disposition with a solid foot, a heterozygous black Tycoon son
- Dam is a flushmate to the mothers of Lots 10 and 11



Left: Granddam to Lot 10, 11 & 16
Right: Grandsire to Lot 10, 11 & 16



CITYVIEW JIMMIE 110J

CA-PG1353941 / CVJB 110J / Red / Homozygous Polled / Jan 29, 21

SVS BROOKS 669D

Act BW: 97

SVS TYCOON 841F

Adj WW: 664

SVS RED ANNIE 411B

Adj YW: 1237

LXR BLAZE 55Z

CITY VIEW BOSS LADY 23E

CITYVIEW 16U BOSSLADY309A

CE 6.1 BW 3.9 WW 90.1 YW 134.5 Milk 26.4 MCE 2.1



Full brother to Lot 17

- Deep red, heavy haired, homozygous polled, long bodied and sound
- Top 10% for WWT and YWT
- Full Brother sold to Rick Clubbe; we used him through AI and calves are arriving smoothly.
- This guy is sure to catch your eye.



TJT2F SUNNYSIDE 2F

CA-PG1247220 / TJT 2F / Red / Polled / Jan 14, 18

KWA ROCK 36B

Act BW: 96

CITY VIEW DAMASCUS 605D

Adj WW: 813

CITY VIEW 18T UNIQUE 428B

Adj YW: 1343

LFE RED CASINO 3036X

ERIXON LADY 2C

ERIXON LADY 13A

CE 14.2 BW 2 WW 69.5 YW 99.9 Milk 24.1 MCE 8.1

Tom as we call him was a highlight in the 2020 sale. We appreciated his added stretch and frame. We also loved the cow families behind him. He has proven to be an efficient breeding bull and is siring all the traits we hoped he would including performance, maternal capability, foot structure and disposition.



CITYVIEW JENSEN 9J

CA-PG1353700 / CVJB 9J / Red / Homozygous Polled / Jan 03, 21

CITY VIEW DAMASCUS 605D

Act BW: 93

TJT2F SUNNYSIDE 2F

Adj WW: 671

ERIXON LADY 2C

Adj YW: 1289

MRC BROKER 6Z

CITY VIEW BOSS LADY 668D

CITYVIEW YAFFINGALE 8Y

CE 6.9 BW 4.9 WW 79.2 YW 120.4 Milk 27.9 MCE 3



Grandsire to Lot 18

- Performance bull, long bodied, deep ribbed and homozygous polled
- Larger framed, easy moving and quiet temperament
- Dam is a maternal sister to lot 12
- Maternal brothers sold to Antelope Creek Enterprises and the Yuke Family

19

CITYVIEW JETT 38J

CA-PG1353784 / CVBB 38J / Red / Homozygous Polled / Jan 12, 21

CITY VIEW DAMASCUS 605D
TJT2F SUNNYSIDE 2F
 ERIXON LADY 2C
 BOUNDARY STUBBY 129A
 CITY VIEW MOSIE 677D
 CITY VIEW 24N MOSIE 3Z

Act BW: 96
 Adj WW: 596
 Adj YW: 1156

CE 11.2 BW 2.7 WW 63.7 YW 95.6 Milk 24.1 MCE 6



Granddam of Lot 19



Grandsire of Lot 19



LOT 19

- Top 15% for CE with a small head and tidy front third
- Deep red baldie, long bodied, deep ribbed, great disposition and homozygous polled
- Dam traces back to one of our original cow families with 838 and Stubby in the pedigree

20

CITYVIEW JASPER 39J

CA-PG1353800 / CVJB 39J / Red / Homozygous Polled / Jan 12, 21

CITY VIEW DAMASCUS 605D
TJT2F SUNNYSIDE 2F
 ERIXON LADY 2C
 TOP FUEL U250 HR
 CITYVIEW 16U BOSSLADY309A
 CITY VIEW UMA 16U

Act BW: 80
 Adj WW: 619
 Adj YW: 1089

CE 14.7 BW 0.5 WW 60.9 YW 85.5 Milk 28.3 MCE 9.4



Sister to Lot 20



Sister to Lot 20



LOT 20

- Heifer approved! Top 3% CE, Top 10% BWT
- Maternal brothers to Chitwood Farms and the Ludwar family and a maternal sister working at Sunstar Simmentals
- Highly maternal cow family going back to the original Boss Lady Cow

21

CITYVIEW JOSH 67J

CA-PG1353851 / CVJB 67J / Red / Homozygous Polled / Jan 18, 21

CITY VIEW DAMASCUS 605D
TJT2F SUNNYSIDE 2F
 ERIXON LADY 2C
 HARVIE BOONDOCK 12Z
 CITY VIEW BOSS LADY 639D
 CITY VIEW WEDGEWOOD 9W

Act BW: 97
 Adj WW: 685
 Adj YW: 1157

CE 8.3 BW 4.3 WW 70.8 YW 98 Milk 27.2 MCE 4.4



Granddam of Lot 21



LOT 21

- Solid red, deep ribbed, long bodied, quiet temperament and homozygous polled
- Smooth head and clean fronted
- Backed by the influential Boss Lady family, his daughters will be awesome cows!



CITYVIEW JOHNNY 80J

CA-PG1353870 / CVBB 80J / Red / Homozygous Polled / Jan 22, 21

- BLACK GOLD APPROVAL 71E
- IPU APPROVAL 101G
- IPU 245A'S MS. SPARKLE 38E
- MADER THE NATIONAL 43E
- CITY VIEW RIGHT 13G
- CITY VIEW 12X RIGHT 408B

Act BW: 89
Adj WW: 643
Adj YW: 1192

CE 8.9	BW 2.5	WW 74.8	YW 109.2	Milk 28.6	MCE 7.1
--------	--------	---------	----------	-----------	---------



Granddam of Lot 22 & 27



Sire of Lot 22

- A calving ease pedigree including a number of heifer safe sires and numbers to back it up.
- Moderate framed, deep bodied, strong top and homozygous polled
- Mothered by a first calf heifer with grand dam and great grand dam still working here



CITYVIEW JAYCE 90J

CA-PG1353894 / CVBB 90J / Red / Homozygous Polled / Jan 25, 21

- KUNTZ SHERIFF 8A
- MRL SLEEP EASY 140D
- MRL MISS 836W
- TYMARC DIGGER 416D
- OH KAY RED GEM 40G
- OH KAY SIERRA 103Y

Act BW: 98
Adj WW: 721
Adj YW: 1299

CE 8	BW 3.4	WW 81.5	YW 126	Milk 27.4	MCE 6.6
------	--------	---------	--------	-----------	---------



Sire of Lot 23

- Impressive EPD profile - all above average and homozygous polled
- Out of a first calf heifer purchased from Oh Kay Farms and sired by the reliable calving ease sire, Sleep Easy.
- He's a stout made solid red bull with a black hoof



CITYVIEW JARVIS 126J

CA-PG1353958 / CVBB 126J / Red / Homozygous Polled / Feb 13, 21

- ERIXON REVELSTOCK 41A
- BERTS DAKOTA 7D
- SWAN LAKE NOREMAC 75Y
- OAKVIEW DOMINATOR 133D
- CITY VIEW SO SEDUCTIVE 105F
- SUN STAR SO SEDUCTIVE 14D

Act BW: 95
Adj WW: 763
Adj YW: 1257

CE 6.3	BW 5.5	WW 85.8	YW 125.1	Milk 31.5	MCE 2.6
--------	--------	---------	----------	-----------	---------



Sire of Lot 24



Brother to Lot 24

- Homozygous polled with above average performance numbers in a larger framed package
- The only son of our Bert bull this year who has produced many retainable offspring and is still working here
- Very productive Dam with a picture perfect udder, maternal brother to Lloyd & Sylvia Fox

25

CITYVIEW JAY JAY 56J

CA-PG1353839 / ADDY 56J / Red / Homozygous Polled / Jan 16, 21

JF MILESTONE 999W

Act BW: 92

WHF LIMITLESS B011

Adj WW: 812

WHF SIERRA 245S

Adj YW: 1321

TNT 90 PROOF Z401

CITYVIEW 309A BOSSLADY 54G

CITYVIEW 16U BOSSLADY309A

CE 6 BW 3.1 WW 83.8 YW 123.1 Milk 23.9 MCE 3.5



Lot 25 and Dam



LOT 25

- Top 20% WWT, Top 25% YWT
- Addison' consignment to the sale, Jay Jay was her 4-H project as a cow/calf pair. She then showed him at Agribition placing respectably in a class with both the Grand and Reserve champion.
- His dam comes from the Boss Lady family and was Champion Female in the 2020 Agribition Junior Show
- He is a quiet, red, long and deep bodied and sired by the popular Limitless

26

CITYVIEW JAY MAN 19J

CA-BPG1353712 / CVBB 19J / Homozygous Black / Polled / Jan 06, 21

MRL PRETTY RECKLESS 68B

Act BW: 102

MRL 231D

Adj WW: 705

MRL MISS 2303Z

Adj YW: 1212

DOUBLE BAR D TANKER 191Y

SUNNYSIDE 30C

JHSN CLUB QUEEN 30Y

CE 4 BW 4.9 WW 83.1 YW 122 Milk 22.2 MCE 0.1



Sire of Lot 26



Sister to Lot 26



LOT 26

- We purchased his sire from McMillen Ranching
- Heavy muscled and as thick as they come, homozygous black and in the top 25% for YW and WW
- Maternal sister sold to McIntosh Livestock and maternal brother working for Jacob Carroubourg

27

CITYVIEW JORDAN 89J

CA-BPG1353891 / CVBB 89J / Black / Homozygous Polled / Jan 25, 21

CNS DREAM ON L186

Act BW: 84

SVF STAR POWER S802

Adj WW: 643

SVF SHEZA STAR N902

Adj YW: 1184

MRC BROKER 6Z

CITY VIEW RIGHT 6E

CITY VIEW 12X RIGHT 408B

CE 8.1 BW 2.6 WW 71.3 YW 108.8 Milk 22.4 MCE 2.7



Granddam of Lot 22 & 27



Sire of Lot 27



LOT 27

- A time tested pedigree in a modern package, goes back to our 12X donor cow and sired by Star Power
- Homozygous polled and heterozygous black
- Maternal brother sold to Bull Family Farm

RS



RS

MADER THE NATIONAL 43E

BPTG1205672 / MDR 43E / Black / Homozygous Polled / Jan 12, 17

LFE GOTHAM 819Y
LFE THE RIDDLER 323B
 LFE BS CHARO 23Y
 NCB COBRA 47Y
LFE BS VIOLET 641A
 LFE BS VIOLET 128Z

Act BW: 80
 Adj WW: 959
 Adj YW:

CE 11.2 BW 2.6 WW 98.8 YW 163.7 Milk 22.3 MCE 9



Dam of The National Daughter of The National

The National continues to impress here at City View! We absolutely appreciate the volume and impressive muscle pattern he sires. He combines user friendly calving ease with big performance and his daughters are proving to be easy doing and ideal mother cows. We feel The National offspring are right for the times and find huge value in what he has to offer!



LOT 28

28

CITYVIEW PICKLE 28J

CA-BPG1353724 / BJB 28J / Homozygous Black / Homozygous Polled / Jan 8, 21

LFE THE RIDDLER 323B
MADER THE NATIONAL 43E
 LFE BS VIOLET 641A
 WLB BOUNTY HUNTER 365C
CITY VIEW ERIN 17G
 WILC ERIN 59E

Act BW: 97
 Adj WW: 809
 Adj YW: 1355

CE 10.1 BW 4.5 WW 104.1 YW 162.9 Milk 22.6 MCE 8.1



Lot 28 and Dam

- Brody's first bull of his own! Pickle was his 4-H project as a cow/calf pair. He showed Pickle at Agribition where he was very competitive.
- Top 1% WWT, YWT and CW, homozygous polled and homozygous black
- Good temperament and halter broke, big ribbed and soft made



LOT 29

29

CITYVIEW JAGERMEISTER 65J

CA-PG1353850 / CVBB 65J / Red / Homozygous Polled / Jan 17, 21

LFE THE RIDDLER 323B
MADER THE NATIONAL 43E
 LFE BS VIOLET 641A
 CITY VIEW XCEL 33X
CITY VIEW 127T RAVEN 55Z
 3D MISS BLK RAVEN 127T

Act BW: 94
 Adj WW: 652
 Adj YW: 1257

CE 7.5 BW 3.1 WW 85.2 YW 135.3 Milk 24.7 MCE 4.1



Dam of Lot 29

Full brother to Lot 29

- Top 20% WWT, Top 10% YWT and homozygous polled
- Solid red, long bodied, deep ribbed, smooth front to back, clean fronted
- Maternal brothers sold to Shiloh Cattle Co. and Trevor Benson & Bonnie Brandt and we have two sisters here

Lot 30

- Heifer approved and homozygous polled, homozygous black
- Powerful bull with an outstanding set of EPD's
- ¼ fleck on the bottom side, grandmother is an 'X' and is still producing here



Granddam of Lot 30



30

CITYVIEW JUMANJI 70J

CA-BPG1353854 / CVBB 70J / Homozygous Black / Homozygous Polled / Jan 19, 21

LFE THE RIDDLER 323B MADER THE NATIONAL 43E LFE BS VIOLET 641A STARWEST POL BLUEPRINT CITY VIEW ET XTRAVAGANCE 82F CITY VIEW XTRAVAGANCE 12X	Act BW: 84
	Adj WW: 719
	Adj YW: 1252

CE 12.9	BW 1.4	WW 83.4	YW 130.3	Milk 29.3	MCE 9.6
---------	--------	---------	----------	-----------	---------

31

CITYVIEW JAMARI 31J

CA-BPG1353762 / CVBB 31J / Red / Homozygous Polled / Jan 9, 21

LFE THE RIDDLER 323B MADER THE NATIONAL 43E LFE BS VIOLET 641A X-T RED BODACIOUS 3B SUNNY VALLEY BLK DIVA 81D SUNNY VALLEY BLK DIVA 69A	Act BW: 89
	Adj WW: 673
	Adj YW: 1270

CE 9.5	BW 2.9	WW 85.6	YW 138.5	Milk 23.3	MCE 5.8
--------	--------	---------	----------	-----------	---------

Lot 31

- Top 5% YWT, Top 15% WWT, homozygous polled
- Solid red, stout bodied with lots of stretch ready to add some extra pounds to your fall pay check
- His dam is a no miss female purchased from Sunny Valley Simmentals



Sister to Lot 31



Welcome to the 2022 Bull Sale! We are very grateful to again be part of this great event. It is a pleasure to always be surrounded by such wonderful people and friends. Thank you to all past bidders and buyers as well as new customers attending for the first time. Your support of our program is greatly appreciated. Congratulations to the Barnett family for bringing an exceptional quality of bulls to present to you this year.



The goal of our program is raise bulls which are structurally sound with moderate frame and birthweight to provide calving ease and convenience to the commercial cattle producer. We have developed cow families within our herd that we believe have the maternal traits to provide productivity and consistency. Our bull has been at City View since last fall so please feel free to call us or Blaine and Tina with any questions or to view the bulls. See you at Johnstone's on March 22.

Tom & Sharon Turnbull and family



32

SUNNYSIDE 4J

CA-BPG1368070 / TJT 4J / Black / Polled / Feb 2, 21

MADER WALK THIS WAY 224B	Act BW: 94
SVS WALKER 719E	Adj WW: 734
SVS BLK ZOEY 401B	Adj YW: 1420
ERIXON LAD 21C	
TJT3F SUNNYSIDE 3F	
SUNNYSIDE HALEY 3Z	

CE 10.1 BW 1.8 WW 69.8 YW 109.2 Milk 30.6 MCE 6.8



Sire of Lot 32



Brother to Lot 32

With only one bull for the 2022 sale, we believe he is a good one! This polled, blazed faced son of SVS Walker 719E brings a nice combination of traits and balance. We have some 719E daughters in production now and are very impressed with their mothering ability. His red blaze faced dam, Sunnyside 3E, comes from one of our most productive and consistent cow families. 4J is a maternal brother to Sunnyside 4H who was very popular in last year's sale.

INNOVATIVE
PRODUCTS

ENHANCING YOUR NUTRITION

PROGRAM

MAKING YOU MORE

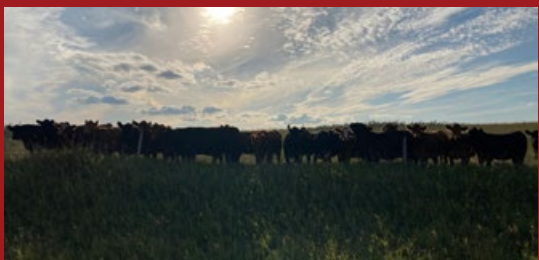
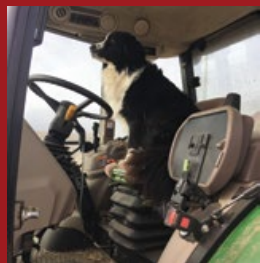
PROFITABLE

Contact your beef territory manager to learn more:

Jessica Hextall (204)901-3058



ABOUND LIVESTOCK



Welcome to the 2022 edition of the City View Simmental & Abound Livestock Bull Sale! As I write this, the saying “when the going gets tough the tough get going” comes to mind. I believe it rings true to the ag community more than ever the past few years. We have done a good job educating the city folk about how and where their food comes from and the standards we uphold to make it are second to none. We are also finding new ways to stay ahead of the curve with the fact Mother Nature seems to be fighting dirty and our so-called political leaders are trying to play us like string puppets. As always, this too will blow over and when it does be damn sure you’re ready to grab onto the upswing of the cattle market by always keeping your bull battery charged with quality proven genetics from a reliable source.

I’d like to take this opportunity to welcome the good folks from Gold Bar Livestock of Caron, Sk to our sale. They have 3 top notch angus bulls that have a lot to offer the industry. They have been developed alongside the Abound bulls since weaning on Oct 4th. Same as other years, the bulls are developed in a 20 acre paddock with steep native hills to give them lots of room to do what bulls do. They are fed grass hay and a 14% textured ration from Trouw Nutrition. Thank you to Jessica Hextall for always making sure we are looked after!

Mother cows are our foundation and without a good foundation it’s tough to build up. At Abound, we are focused hard on building large family groups to add consistency to the calf crop and it’s really starting to show with many half to full sisters working in herd for us. We have also started to venture down the road of embryo transfer and are always looking to bring in the next cornerstone female to build a larger genetic base for the future. Cows here need to work! They must be able to pull off the highest weaning values possible because that’s payday for most outfits! They must be able to withstand the same management as our commercial herd grazing stubble and stockpiled grass late into fall/early winter. In addition, quality udders, quality feet and good attitudes are held in the highest regard!

Now, more than ever, it’s important to get boots on the ground and tour the farm before sale in case the unknown chucks a curve ball - you’re ready! If you have time be sure to stop for a tour, you’re welcome anytime! The cattle industry is people driven. This is a family business and our way of life so trust we are here to stay and build long term relationships with you, our customers and friends. We look forward to seeing you!

In closing Lisa and I can’t thank our past customers enough and look forward to working with you and all new customers in the future.

Thank you! See you soon!

Brian & Lisa



RS

BORDER BUTTE TANNERITE 350G

2100007 / BRDR 350G / Feb 1, 19

- BRUNS BLASTER
- BORDER BUTTE BLASTER 305E**
- BORDER BUTTE EVE 70C
- VISION UNANIMOUS 1418
- BORDER BUTTE MARION 221E**
- BORDER BUTTE MARION 84Z

Act BW: 70
Adj WW: 870
Adj YW: 1367

BW 3.7	WW 70	YW 126	Milk 28	CE 2	MCE 9
--------	-------	--------	---------	------	-------



Daughter of Tannerite

Back in December of 2019, we discussed our need for the next new herd sire. Something to add some mass, some calving ease, and something different from the rest of the world. Later that week, I happened to stumble across a facebook post shared by Golden Thread for Border Butte Angus of Coutts, Alberta. There was Tannerite - something different, something with mass, something with a little calving ease but still performance. I immediately contacted Cindy Bosch and gathered the info we needed. A week later we stood in Medicine Hat. When we arrived, I grabbed a weight and sale order sheet and sure as shit he was the lead off yearling bull and had people sorting him out left and right. After a hot battle, we came out on top and couldn't be more excited about his progeny!



33

ABOUND TANNERITE 118J

2197368 / BARN 118J / Feb 03, 21

- BORDER BUTTE BLASTER 305E
- BORDER BUTTE TANNERITE 350G**
- BORDER BUTTE MARION 221E
- MERIT MERGER 6061D
- ABOUND LASSIE 934G**
- HILOW LASSIE 71A

Act BW: 87
Adj WW: 746
Adj YW: 1378
Oct 4/21 WT 780

BW 4.7	WW 62	YW 112	Milk 27	CE -1	MCE 6
--------	-------	--------	---------	-------	-------



Dam of Lot 33



*Granddam of Lot 33,
Dam of Lot 44*

118J is a show stopper! I may be bias but it could be argued he is better than his old man at this stage in life. Great structure, well haired, soft made with some style and presence and a super disposition. He is out of a first calf Merger daughter from the Lassie cow family. This guy is jam packed with maternal traits and a great set of EPD's to boot so don't miss your chance to grab onto a great one!

34

ABOUND TANNERITE 108J

2197363 / BARN 108J / Jan 23, 21

BORDER BUTTE BLASTER 305E
BORDER BUTTE TANNERITE 350G
 BORDER BUTTE MARION 221E
 MERIT MERGER 6061D
ABOUND HEROINE A 921G
 IVANHOE HEROINE A 35B

Act BW: 96
 Adj WW: 714
 Adj YW: 1284
 Oct 4/21 WT
 770

BW 6.1 WW 64 YW 113 Milk 22 CE -6 MCE 4



Grandsire of Lot 34



LOT 34

If you like cattle long and deep sided with nice hair like our prime minister, this guy is a good fit. The 921G cow is high performing and has a ton of good about her as she quietly goes about her day to day business. In addition, Tannerite has left us some big capacity females in our replacement pen that look to have a bright future.

35

ABOUND TANNERITE 110J

2197355 / BARN 110J / Jan 30, 21

BORDER BUTTE BLASTER 305E
BORDER BUTTE TANNERITE 350G
 BORDER BUTTE MARION 221E
 BLACK RIDGE HARVESTOR 66D
ABOUND POLLYANNA 801F
 IVANHOE POLLYANNA 5A

Act BW: 73
 Adj WW: 701
 Adj YW: 1294
 Oct 4/21 WT
 784

BW 0.1 WW 54 YW 93 Milk 25 CE 10 MCE 13



Granddam of Lot 35



LOT 35

Look out heifer pen, this guy was made for you! A Tannerite son packed with maternal calving ease traits. Knowing everyone's definition of "calving ease" is slightly different, we feel this guy is a good balance. He has a reasonable birth weight but doesn't give up any performance and is smooth from front to back. To round out this package, he has a super calm disposition!

Thank You!



We had the opportunity to consign a couple of heifers in the Harvest Classic sale in October held in conjunction with the Glen Gabel dispersal. It really hurt to see these females leave our program but knowing they went to two highly respected producers in the industry eased the pain. We would like to thank Shiloh Cattle Company for purchasing Abound Edge Pride 127J and Border Butte Angus for purchasing Abound Black Lucy 130J. We are very excited for their futures!



RS

ABOUND MERGER 923G

2083387 / BARN 923G / Feb 10, 19

MERIT 77X
MERIT MERGER 6061D
 MERIT M'BROOK LASS 3074
 RB TOUR OF DUTY 177
HI LOW QUEEN MOTHER 16D
 HI LO QUEEN MOTHER 67X

Act BW: 98
 Adj WW: 821
 Adj YW: 1432

BW 3.8 WW 62 YW 109 Milk 25 CE -1 MCE 8



Dam of 923G and Lot 42



Sire of 923G

Abound Merger 923G was a bull we raised and sold in 2020. Thank you to Mark and Diane Ferrara who allowed us to work with them and run this bull in our Abound program for a season. He was a bull that really caught our eye from day one. His dam, Queen Mother 16D, was a little different twist on pedigree and his sire Merit Merger 6061D was a key part of the building blocks of our Abound females.



36

ABOUND 923G 107J

2196660 / BARN 107J / Jan 22, 21

MERIT MERGER 6061D
ABOUND MERGER 923G
 HI LOW QUEEN MOTHER 16D
 SANDY BAR IDEAL 185W 216Y
IVANHOE BLACKBIRD 60B
 GLENDOR BLACKBIRD 43Z

Act BW: 89
 Adj WW: 711
 Adj YW: 1266
 Oct 4/21 WT 863

BW 3.2 WW 54 YW 95 Milk 26 CE 1 MCE 10



Dam of Lot 36

When this guy was born we could tell on the camera from miles away that he was a bull. He had the look, he had the stance, hell the odd time he even had the attitude! Demonstrating true herd bull characteristics, Abound 107J has a touch of added frame with a big, long stride made to cover ground. In addition, he is also likely to be in the running of being named one of the longest spined yearling bulls to sell this spring anywhere! This would be a bull at the top of our list to add some powerhouse females into your herd!



37

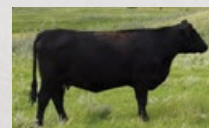
ABOUND 923G 121J

2196664 / BARN 121J / Feb 05, 21

MERIT MERGER 6061D
ABOUND MERGER 923G
 HI LOW QUEEN MOTHER 16D
 CRESCENT CREEK RITO 139C
ABOUND POLLYANNA 710E
 IVANHOE POLLYANNA 5A

Act BW: 95
 Adj WW: 737
 Adj YW: 1289
 Oct 4/21 WT 831

BW 4.7 WW 57 YW 104 Milk 25 CE -4 MCE 7



Dam of Lot 37



Granddam of Lot 37

This is a bull backed by the Pollyanna cow family, another popular group in our Abound herd. They're a cow family that rises to the top each year to bring you bulls like Abound 121J. We really admire this sire group for the vigour the calves demonstrate at birth and the strong athletic bulls they become.

38

ABOUND 923G 114J

2196650 / BARN 114J / Feb 02, 21

MERIT MERGER 6061D
ABOUND MERGER 923G
 HI LOW QUEEN MOTHER 16D
 BELL QUANTUM 26T
GGA BLACK LUCY 1Z
 IVANHOE B BLACK LUCY 4T

Act BW: 85
 Adj WW: 701
 Adj YW: 1240
 Oct 4/21 WT
 818

BW 2.1 WW 47 YW 84 Milk 24 CE 1 MCE 4



Maternal Brother to Lot 38



LOT 38

This is another strong addition to the sales offering from the senior division of our herd. What more can you ask for when 10 year old cows raise bulls like this in some of the most trying times of recent years? Abound 114J is a very complete and eye appealing bull. He is very deep in the flank and smooth made with a very clean masculine look. Put a check mark beside this guy because we are sure you will pick him out in the pen!

RS

BLACK RIDGE HARVESTOR 66D

1953049 / DUM 66D / Feb 8, 16

SAV HERITAGE 6295
SAV HARVESTOR 0338
 SAV EMBLYNETTE 7749
 PEAK DOT PREDOMINANT 135S
BLACK RIDGE LEONA 22W
 BLACK RIDGE LEONA 22S

Act BW: 95
 Adj WW: 755
 Adj YW: 1320

BW 2.6 WW 54 YW 89 Milk 17 CE 4 MCE 8



Daughter of Black Ridge Harvester



Sire of Black Ridge Harvester



RS

Black Ridge Harvester 66D is a pure beef bull with incredible muscle shape. He is super correct with a beautiful big foot and is one of the most easy keeping bulls you will find! In the spring of 2017, we were lucky to visit the Moleski's for a tour and then made the trip to Yorkton to be sure "John" came home to Abound. A bull that can leave you sound and attractive cattle in both the bull and heifer pens is very special!

39

ABOUND HARVESTOR 131J

2196661 / BARN 131J / Mar 03, 21

S A V HARVESTOR 0338
BLACK RIDGE HARVESTOR 66D
 BLACK RIDGE LEONA 22W
 SANDY BAR IDEAL 185W 216Y
IVANHOE DNA PRIDE 72B
 IVANHOE DNA PRIDE 18Z

Act BW: 88
 Adj WW: 696
 Adj YW: 1265
 Oct 4/21 WT
 726

BW 2.9 WW 49 YW 85 Milk 19 CE 2 MCE 6



Maternal Brother of Lot 39



LOT 39

Starting off the offering for our Harvester sire group is Abound Harvester 131J. This is a March calf with a very clear future. He is soft made and very complete in his make up. His dam is one of those no fuss kind of cows, quietly going about her business raising females that we have retained in our herd and bulls that have sold in past sales.



Lot 40

Harvestor 101J was born the night of the really bad windstorm last January, a day I am sure most of us will not forget. Although not all our infrastructure survived that night, we were thankful the next morning when the barn was still standing because this dude was inside ripping around doing what they do. That night must have blown this guy in the right direction because he has done nothing but excel from day one. With a perfect foot, lots of muscle and a super wide top, Harvestor 101J is maturing into a very impressive bull. Hats off to this 10-year-old dam because she raised another good one here!



Dam of Lot 40

40

ABOUND HARVESTOR 101J

2196651 / BARN 101J / Jan 14, 21

- S A V HARVESTOR 0338
- BLACK RIDGE HARVESTOR 66D
- BLACK RIDGE LEONA 22W
- ISLA BANK WIDESPREAD 67T
- IVANHOE ROYAL PRIDE 3Z
- IVANHOE ROYAL PRIDE 25M

Act BW: 70
Adj WW: 648
Adj YW: 1333
Oct 4/21 WT 811

BW -1.2	WW 41	YW 71	Milk 17	CE 10	MCE 11
---------	-------	-------	---------	-------	--------

41

ABOUND HARVESTOR 115J

2196656 / BARN 115J / Feb 02, 21

- S A V HARVESTOR 0338
- BLACK RIDGE HARVESTOR 66D
- BLACK RIDGE LEONA 22W
- MERIT 8808
- GLENDOR LASSIE 23A
- GLENDOR LASSIE 6U

Act BW: 100
Adj WW: 739
Adj YW: 1225
Oct 4/21 WT 861

BW 5.4	WW 52	YW 84	Milk 20	CE -6	MCE 3
--------	-------	-------	---------	-------	-------



Lot 41

If you have been following our program for the last few years, you would have heard us talk about this guy's dam. Lassie 23A is one of those cows we hope never grows old because she is just flat good. With a perfect temperament and ideal udder, she consistently raises these powerhouse bulls. Come fall, we always feel sorry for her as she has these 900 lb lugs by her side. This is a really solid bull and paints a perfect picture of the Harvestor sire group.



Left: Dam of Lot 41
Right: Maternal Brother of Lot 41

42

ABOUND HARVESTOR 119J

2196662 / BARN 119J / Feb 04, 21

S A V HARVESTOR 0338
BLACK RIDGE HARVESTOR 66D
 BLACK RIDGE LEONA 22W
 R B TOUR OF DUTY 177
HI LOW QUEEN MOTHER 16D
 HI LOW QUEEN MOTHER 67X

Act BW: 89
 Adj WW: 751
 Adj YW: 1322
 Oct 4/21 WT
 870

BW 1.5 WW 57 YW 95 Milk 24 CE 5 MCE 9



Dam of Lot 42



Maternal Brother to Lot 42,
 Sire of Lot 36-38



LOT 42

Our roots were and still are strongly in the commercial cattle business. Both divisions have the same goals here and we have used Harvester 66D on our commercial Simmental herd as well. He is an all around proven sire! As we write this, we are calving another strong set of Harvester heifers and their mothering skills are second to none complete with nice udders and a perfect temperament. The other side is demonstrated with bulls like Abound Harvester 119J that are so consistent in their make up with nice clean heads, good feet and lots of muscle pattern and shape.

43

ABOUND HARVESTOR 123J

2196652 / BARN 123J / Feb 11, 21

S A V HARVESTOR 0338
BLACK RIDGE HARVESTOR 66D
 BLACK RIDGE LEONA 22W
 SANDY BAR INNOVATOR 46R
IVANHOE DNA PRIDE 18Z
 IVANHOE DNA PRIDE 38R

Act BW: 86
 Adj WW: 673
 Adj YW: 1318
 Oct 4/21 WT
 759

BW 2.6 WW 46 YW 81 Milk 18 CE 1 MCE 1



Dam of Lot 43



Brother to Lot 43



LOT 43

As we start into our 6th year of developing our purebred herd we're starting to see the consistency in our cow families. In this set of Harvester bulls, we have a perfect example of just that. The DNA Pride family includes this guy's mother, 18Z, as well as his maternal sister raising lot 39, Abound Harvester 131J. Abound 123J is as long as they come with a wide top and is an overall well balanced bull.

44

ABOUND HARVESTOR 133J

2196657 / BARN 133J / Mar 06, 21

S A V HARVESTOR 0338
BLACK RIDGE HARVESTOR 66D
 BLACK RIDGE LEONA 22W
 HILOW TIGER 1X
HILOW LASSIE 71A
 HAPPYVALE NP LASSIE 17K

Act BW: 99
 Adj WW: 727
 Adj YW: 1258
 Oct 4/21 WT
 748

BW 3.6 WW 47 YW 81 Milk 25 CE 0 MCE 3



Dam of Lot 44,
 Granddam of Lot 33



Brother of Lot 44



LOT 44

Abound 133J is packed with off the charts maternal traits. The Lassie cow family packs a punch and these females know how to get it done. A maternal sister to this guy raised the high selling bull for us back in 2020. Another half sister has raised a head turner in Lot 33, Abound Tannerite 118J. He also has a full sister in the Abound herd that is about to start her career as she is set to calve any day now. 133J is one of the younger bulls but he doesn't give up anything to his older pen mates!



LOT 45

45

GOLD-BAR TUCK AND ROLL 111J

2196907 / GBL 111J / Jan 11, 21

JL AUTHORITY 2098
MLG MOMENTOUS 6079
 MLG BLACKBIRD 10Z
 BUSHES CONQUER 156
MICH HEROINE 1186Y
 SASKALTA HEROINE 248M

Act BW: 102

Adj WW: 709

Adj YW:

BW 4.6 WW 50 YW 96 Milk 28 CE -5 MCE 1



Dam of Lot 45

If mass, rib, and volume is what you need to add to your cowherd this is your guy. His dam is a no miss cow and always brings one in for the keeper pen every fall with one of the heaviest WW every time. He is one we think a lot of, so take the time sale day to analyze him or give us a call. We think he has a very bright future!



LOT 46

46

GOLD-BAR TRAIN STATION 216J

2196914 / GBL 216J / Feb 16, 21

JL AUTHORITY 2098
MLG MOMENTOUS 6079
 MLG BLACKBIRD 10Z
 S A V RESOURCE 1441
GOLD-BAR MISTRESS 101E
 SHEIDAGHAN MISTRESS 99B

Act BW: 90

Adj WW: 712

Adj YW:

BW 2.9 WW 53 YW 100 Milk 20 CE 2 MCE 4



Dam of Lot 46

A February born bull that has always had that herd bull look to him. His dam is one of the most soggy made, massive ribbed cows you will find with a perfect udder. Just turn this guy loose in the spring, he won't disappoint. Safe for the heifer pen.



LOT 47

47

GOLD-BAR PROPAGANDA 119J

2205069 / GBL 119J / Jan 19, 21

BROOKING BANK NOTE 4040
BROOKING FIREBRAND 6068
 BROOKING ANNIE K 390
 HF ALASKAN 94T
SHEIDAGHAN MISTRESS 99B
 SMW MISTRESS 22P

Act BW: 88

Adj WW: 684

Adj YW:

BW 1.8 WW 50 YW 77 Milk 17 CE 4 MCE 8



Dam of Lot 47

119J is out of one of the favourite cows that always gets it done. He is very proud in his makeup, with a smoother front end but some mass to go with it, he will work in the heifer pen or cows. A nice addition to any herd to help with adding pounds to his calves.

What Do The Numbers Mean?

Calving Ease (CE) - The ease with which a bull's calves are born to first calf heifers. The larger EPD indicates a higher percentage of unassisted births for calves sired by that bull.

Birth Weight (BW) - Calf weight at birth adjusted to the dam's age. The larger EPD indicates a heavier average birth weight.

Weaning Weight (WW) - Weight taken between 160 and 250 days of age and adjusted to 205 days of age and to the dam's age. The larger EPD indicates a heavier average weaning weight for calves sired by that bull.

Yearling Weight (YW) - Weight taken between 330 and 440 days of age and adjusted to 365 days of age and to the dam's age. The larger EPD indicates a heavier average yearling weight for calves sired by that bull.

Maternal Calving Ease (MCE) - The ease a bull's daughters calve as first calf heifers. The larger EPD indicates a higher percentage of unassisted births for calves born to the sire's daughters.

Milk - The milk EPD is a predictor of a sire's genetic merit for milk as expressed in his daughters production, or in other words, the part of weaning weight attributed to milk genes. The larger EPD indicates heavier average weaning weights due to daughter's greater maternal ability.

Total Maternal (TM) - A bull's ability to pass on milk production and growth rate through his daughters. It predicts the total weaning (direct and maternal) that will be displayed in his daughter's offspring. It is calculated by adding half of the Weaning Weight EPD with the Milk EPD. The larger EPD indicates higher pounds at weaning.


2020 Simmental Breed Averages - CE 6.7 BW 3.4 WW 69.5 YW 102.4 Milk 25.2 MCE 3.9

2020 Angus Breed Averages - BW 3.5 WW 48 YW 86 Milk 22 CE 3.5 MCE 7

Win a \$2000 Sale Credit

Purchase a bull from any current Saskatchewan Simmental member and when the registration papers are transferred, you are entered to win a \$2000 sale credit! The draw will be made at the SSA Annual general meeting in July and the lucky winner will have one year to use the credit at public auction or private sale on bulls or females from any current Saskatchewan member.





City View Simmentals
Box 1494
Moose Jaw, SK
S6H 7A8

If you would like to be removed from the mailing list
please email cityviewsimmentals@sasktel.net

CITY VIEW SIMMENTALS & ABOUND LIVESTOCK

12th Annual Bull Sale