

FLADELAND LIVESTOCK
and
TWIN VIEW LIVESTOCK
BULL SALE

A close-up, artistic photograph of a bull's head, focusing on its eye and nose. The lighting is warm and dramatic, with a gradient from dark blue on the left to bright orange on the right, matching the background. The bull's fur is dark, and its eye is partially visible, looking towards the right.

2022
MARCH 16

Johnstone Auction
Moose Jaw, SK

FLADELAND LIVESTOCK
and
TWIN VIEW LIVESTOCK
BULL SALE

**2022
MARCH 16**

**Johnstone Auction
Moose Jaw, SK**

Sale Time: 1PM CST

**Sale Location : Johnstone Auction
Mart, Moose Jaw, Saskatchewan
4 miles west of Moose Jaw on the
Trans Canada highway.**

WATCH AND BID ONLINE



TERMS AND CONDITIONS:

The terms of the sale are cash or cheque. All settlements must be made with the clerk following the sale before any cattle will be released.

Disputes: Bidding will be re-opened between the parties involved in the dispute. If no further bids are made, the buyer will be the person from whom the auctioneer accepted the last bid. The auctioneer's decision on all disputes will be final.

ANNOUNCEMENTS:

All announcements made from the auction block will take precedence over the printed material matter in the catalog . Buyers are therefore cautioned to pay attention to such disclosures.

ACCIDENTS:

Although every precaution will be taken to protect the safety and comfort of the buyers, neither the owner, the auctioneer of Association assumes any responsibility in this matter and disclaims any liability, legal or otherwise, in the event of accident or loss of property.

SALE DAY PHONES

Johnstone Auction Mart.....306-693-4715
Del Fladeland306-869-8123
Aaron Birch403-485-5518
Joe Barnett403-465-2805
Darwin Rosso306-690-8916

SALE STAFF

Auctioneer, Scott Johnstone306-631-0767
Ringman, Darwin Rosso306-690-8916
Ringman, Corey Mantell306-693-4715

FERTILITY

All bulls will be semen tested prior to the sale.

CATALOG

This catalog can be viewed online at:
fladelandlivestock.com, twinviewlivestock.com and
johnstoneauction.com
Design and production by Pittman Print Media

DELIVERY:

Delivery will begin approximately the first week in April.

PHONE BIDS/SIGHT UNSEEN:

If you are unable to make the sale, but wish to make a purchase, please give us a call and we will gladly discuss your needs with you and find a bull to meet your satisfaction. Online bidding and videos of the sale bulls will be available on Liveauctions.tv

ACCOMMODATIONS:

A block of rooms has been booked at DAYS INN 306 691 5777 under Fladeland Livestock.

PRE-SALE LUNCH:

Come anytime Tuesday before the sale to view the cattle and visit. A complimentary lunch will be served on Wednesday prior to the sale.

GUARANTEE:

All cattle are guaranteed under the terms and conditions of sale as recommended by the Canadian Gelbvieh Association.

INSURANCE:

Ownership commences to the new owner as soon as the animal is sold. Loewen Agencies – Brent Loewen, 306-869-7999 will be there sale day to look after your insurance needs. All bulls returning to Fladeland Livestock or Twin View Livestock are recommended to be insured. Although every precaution will be taken to prevent injury they are not responsible if your purchase is not insured.

GELBVIEH BREED AVERAGE EPDS

CE	BW	WW	YW	MK	TM	MCE
11	0.4	55	77	20	47	5

WELCOME

friends and fellow Cattlemen

Welcome to the third annual Fladeland Livestock and Twin View Livestock Bull Sale! It is our pleasure to share this offering with you as you search for your next herd sire.

Our programs working together just makes sense. Our approach to beef cattle production and the purebred industry are very similar. Both the Fladeland and Twin View programs pride ourselves on creating industry leading, highly sought after Gelbvieh seed stock. We work hard to stay at the forefront of the cattle industry and then offer you a product you can trust.

Our programs take a real world, sensible approach to raising cattle. We have commercial expectations and cattle that just happen to carry a registration paper. We do show cattle as a means of promotion and are extremely proud that our cattle succeed in the pasture and beyond. For three consecutive years of Agribition events, our programs have shared all of the Champion Bull and Female awards each year.

Now, more than ever, we would really like to see you at the farm. It'd be an honour to enjoy a cup of coffee with you! We look forward to visiting with you about your program and your specific needs. We want you to get exactly what you're after. Let us help you! We would also enjoy the opportunity to tour you through the program. We believe your bull's mother is as important as any other factor in bull selection.

If you can't make it before the sale, give us a call and we'll see you on sale day. The bulls will be at Johnstone's Monday evening and you're more than welcome to tour there right up to sale time. The professional staff at Johnstone Auction and Darwin Rosso are available as well if you have questions or you'd like another opinion.

Yours in Gelbvieh,
The Fladeland Livestock and Twin View Livestock Team





From all of us at Fladeland Livestock, we would like to welcome you to the 2022 bull sale.

Once again, we are partnering up with Twin View Livestock and together we are bringing you a solid set of bulls from both our programs with proven and new genetics.

Like most of you, we faced a lot of challenges in 2021. Lack of moisture, low dugouts and shortage of hay made us all make tough decisions to sell down the cow herd and to be more creative with the haystack which is still an ongoing process.

However, there have been some bright spots throughout the year. Life slowly started to become a bit more normal as the boys got to play sports again and they attended some junior shows. They had lots of fun, learned a bunch, met new friends and even brought home a few banners.

The biggest highlight of the year was to have our herd sire Fladeland Gronk 23G ET picked as the Canadian National Grand Champion bull at Agribition. We also had a Fladeland Element 21E son win the 2021 Canadian Bull Futurity for Goodview Gelbvieh. There are several brothers to Gronk and Element sons selling in this sale.

Our sale bulls are raised, grown and marketed to sell as up and coming two year olds with no bulls selling prior to the sale. The bulls run on grass all summer with no grain and in the winter are fed and maintained to develop into good structured, sound, efficient bulls.

As always, feel free to come to the yard and have a look at the bulls. Find us on Facebook or at www.fladelandlivestock.com to check out the videos of the bulls. Once again you can bid online on LiveAuctions.tv. If you have any questions call Del at 1-306-869-8123

Thank you for your past, present and future support!

The Fladeland crew



THE FLADELAND FAMILY

Gladmar, Saskatchewan, Del (306) 869-8123, fladelandlivestock.com

FLAD FLAD FLADELAND ELEMENT 21E RS

Red / Homozygous Polled / Purebred

CDGV163422

JRI HOSS 293A43 ET
JRI GUNG HO 282C51
 JRI MS FRANKIE 282R11
 RA MCCOY 2J PRECISION 9P
FLAD FLADELAND SADIE 28X
 FLF FLADELAND SADIE 54K

Feb 6/17		FLAD 21E
Act BW	Adj WW	Adj YW
84	644	1314

CE	BW	WW	YW	MK	TM	MCE
16.6	-2.6	60	92	22	52	8



REFERENCE *Sire*

RWG RIGHT COMBINATION 5506 RS

Red / Homozygous Polled / Purebred

CDGV156503

LCR WARNOCK 612W
RWG WAR ADMIRAL 2528
 RWG SEXY-KITTY 6034
 SLC MASTER PLAN 191U
SLC LORA 164Y
 SLC LORA C 299P

May 4/15		RWG C506
Act BW	Adj WW	Adj YW
97	849	1394

CE	BW	WW	YW	MK	TM	MCE
3	4.3	83	128	14	55	-1



REFERENCE *Sire*

AJB FARMSTRONG RS

Red / Polled / Simmental

CDSM1140361

HARVIE JDF WALLBANGER 111X
ERIXON DEALER 63Z
 JDF PEPSI 61U
 KWA RED ROCK 5T
AJB DOUBLE ROCK LADY 6A
 AJB LADY ROCHFORT 208Y

Apr 2/15		AJB 28C
Act BW	Adj WW	Adj YW

CE	BW	WW	YW	MK	TM	MCE
7	3.6	80	123	22	62	4



REFERENCE *Sire*



REFERENCE *Sire*

LRSF LRSF LRL DEWALT F148 **RS**

Red / Homozygous Polled / PC75 AMGV1423836

JRI TOP PRODUCER 282Z3
DCSF POST ROCK POWER BUILT 37B8
 DCSF POST ROCK WILMA 298Z8 ET
 RUP RUPPLE YUKON 301P
LRSF NELLIE C62
 LRSF NELLIE Y134

Feb 19/18		LRSF F148
Act BW	Adj WW	Adj YW
81	773	1252

CE	BW	WW	YW	MK	TM	MCE
14.8	-2.4	63	92	27	58	9



Lot 4H

FLAD FLADELAND HEADER 4H **4H**

Red / Polled / Purebred CDGV174292

PHG DOMINATOR D78
FLAD FLADELAND FORGED IN FIRE 73F ET
 TIP MISS ANGELA 93W
 FLAD FLADELAND PAINKILLER 123C ET
FLAD FLADELAND FIESTA 139F
 FLAD FLADELAND ACORN 8A

Apr 4/20		FLAD 4H
Act BW	Adj WW	Adj YW
83	599	1047

CE	BW	WW	YW	MK	TM	MCE
14.3	-0.7	55	76	19	47	7

This is the only Fladeland Forged in Fire 73F son in the sale. He is dark red, smooth made and sharp fronted. We had great success with Forged in Fire on our heifers. He adds calving ease and vigor and we feel FLAD 4H will be a great option to breed heifers.



Lot 6H

FLAD FLADELAND HILLIE 6H **6H**

Red / Polled / Purebred CDGV174350

WGG JUST GET-N-GO 90J
JSJ ELITE 22E
 JSJ BEAUTY 6B
 PHG DOMINATOR D78
FLAD FLADELAND FREAKY 74F ET
 TIP MISS ANGELA 93W

Apr 24/20		FLAD 6H
Act BW	Adj WW	Adj YW
85	607	1014

CE	BW	WW	YW	MK	TM	MCE
15.3	-0.5	59	79	17	46	5

FLAD 6H is sired by JSJ Elite 22E who we have used very successfully in our heifer pen. They are born easy and gain well.

FLAD FLADELAND HEAVY HITTER 11H 11H

Black / Polled / BA50

CDGV174361

HAMI HF DECISIVE 56Z
RICHMOND CALL OF DUTY SRD 1C
 RICHMOND SPECIAL FATE SRD50A
 RID R COLLATERAL 2R
FLAD FLADELAND BOTTOMS UP 23B
 FLAD SHANIA 45S

Apr 26/20		FLAD 11H
Act BW	Adj WW	Adj YW
84	635	1042

CE	BW	WW	YW	MK	TM	MCE
11.3	-0.2	76	112	23	61	5

A Balancer bull out of the productive FLAD Bottoms Up 23B, who consistently raises the good ones that are in the top of the pen each year. FLAD 11H will add hair, length of body, style and will make excellent replacement females and add the hybrid cross to increase the weaning weights.

**FLAD FLADELAND HOLLYWOOD 13H 13H**

Black / Polled / BA75

CDGV174347

S A V FINAL ANSWER 0035
EGL LIFELINE B101
 EGL ESTELLE X014
 JRI GUNG HO 282C51
FLAD FLADELAND FOXY LADY 64F
 FLAD FLADELAND LYNX 19Z

Apr 27/20		FLAD 13H
Act BW	Adj WW	Adj YW
89	617	1074

CE	BW	WW	YW	MK	TM	MCE
15.8	-3	62	96	21	52	5

Here is one of our favorite black bulls. He has style, depth of body, and awesome muscle expression. His maternal grand sire JRI GUNG HO is an excellent female maker and he is also the sire of Fladeland Element 21E. We used EGL Life Line B101 for his calving ease and maternal traits on a group of heifers with good results. FLAD 13H should work well on heifers as well.

**FLAD FLADELAND HORSE POWER 20H 20H**

Red / Polled / PC50

CDGV178434

ERIXON DEALER 63Z
AJB FARMSTRONG 28C
 AJB DOUBLE ROCK LADY 6A
 VCR SIX PACK 25S
VV XPECT MORE 112X
 HDS NIKKI 39N

Apr 30/20		FLAD 20H
Act BW	Adj WW	Adj YW
80	660	1107

CE	BW	WW	YW	MK	TM	MCE
11	0.3	66	96	25	58	5

FLAD 20H is a powerful half blood bull. He is dark red, long bodied with just the right frame size. To his progeny he will add hybrid vigor, add pounds and add strong maternal strength with the combination of VV 112X x AJB Farmstrong 28C.



**FLAD FLADELAND HATCHET 22H****22H**

CDGV174300

Red / Polled / PC88

DCSF POST ROCK POWER BUILT 37B8

LRSF LRL DEWALT F148

LRSF NELLIE C62

FLAD FLADELAND GUNPOWDER 40Y

FLAD FLADELAND FIRE 8F

FLAD FLADELAND BED BUG 96B

Apr 30/20		FLAD 22H
Act BW	Adj WW	Adj YW
71	692	1127

CE	BW	WW	YW	MK	TM	MCE
14.9	-2.2	58	83	28	57	8

Fladeland Hatchet 22H is our lead off LRL Dewalt F148 son. He is nice fronted, smooth in his design, big barreled, and is easy fleshing. The Dewalt offspring are stout, soft made and have great hair. In the right program Hatchet could be used on heifers and cows in a dual purpose role.

**FLAD FLADELAND HYDRO 23H****23H**

CDGV174204

Black / Polled / BA50

HAMI HF DECISIVE 56Z

RICHMOND CALL OF DUTY SRD 1C

RICHMOND SPECIAL FATE SRD50A

RWG TEXAS WORTH 9223

FLAD FLADELAND ARROW 88A

FLAD DJW FINE WINE 89W

May 1/20		FLAD 23H
Act BW	Adj WW	Adj YW
73	661	1081

CE	BW	WW	YW	MK	TM	MCE
15.4	-1.9	69	100	23	58	7

Here is another well balanced son of Call of Duty SRD 1C. Famous for his daughters that have volume, good structure and have near perfect udders. When you add in Fladeland Arrow 88A to the mix this makes 23H stacked maternally on the top and bottom side of his pedigree.

**FLAD FLADELAND HIGHWAYMAN 24H****24H**

CDGV173580

Red / Polled / Purebred

JRI GUNG HO 282C51

FLAD FLADELAND ELEMENT 21E

FLAD FLADELAND SADIE 28X

LCR WARNOCK 612W

FLAD FLADELAND BAYWATCH 41B

FLAD STRAWBERRY 28S

May 2/20		FLAD 24H
Act BW	Adj WW	Adj YW
83	768	1152

CE	BW	WW	YW	MK	TM	MCE
11.6	-0.1	56	79	25	53	5

Fladeland Highwayman 24H is very complete, free moving, sound in his structure, with a big foot under him. He has been the stand out all along being deep ribbed with extra muscle, overall mass and lots of testicle. We thought highly enough of Highwayman that we used him on some cows last breeding season. Not to forget his highly productive dam Fladeland Baywatch 41B, who is making her mark as a top end, elite cow around here. She also raised our high selling bull last year Fladeland Grover 102G, who sold to Joe Lansing. We have Grover calves in the pen and they are impressive.

FLAD FLADELAND HEAVY METAL 30H 30H

Red / Polled / Purebred

CDGV174257

JRI GUNG HO 282C51

FLAD FLADELAND ELEMENT 21E

FLAD FLADELAND SADIE 28X

FLAD FLADELAND BOOGYMAN 28A ET

FLAD FLADELAND DECLARE 52D

VV WHAT A GEM 78W

May 3/20		FLAD 30H
Act BW	Adj WW	Adj YW
87	624	1126

CE	BW	WW	YW	MK	TM	MCE
12.4	0.1	64	99	20	52	7

FLAD 30H is a Fladeland Element 21E son. He is long bodied, heavy muscled with width and depth of quarter, dark red and good haired. 30H will have an extra shot of performance with Fladeland Boogyman 21A ET on the bottom side of the pedigree.

**FLAD FLADELAND HANG ON 34H 34H**

Red / Polled / PC88

CDGV174353

DCSF POST ROCK POWER BUILT 37B8

LRSF LRL DEWALT F148

LRSF NELLIE C62

RWG RIGHT COMBINATION 5506

FLAD FLADELAND FIRECRACKER 93F ET

FLAD FLADELAND SPARKS FLY 29Z

May 3/20		FLAD 34H
Act BW	Adj WW	Adj YW
71	625	1039

CE	BW	WW	YW	MK	TM	MCE
12.4	-1.7	60	88	23	53	6

Here is a good choice if you are looking for a bull to breed a large group of heifers. 34H is out of a first calver. He has a moderate 71lb birthweight, nice head shape with extra neck extension and smooth shoulder. We used his sire LRL Dewalt F148 on heifers with success. He is easy calving and moderates birthweights.



INNOVATIVE

PRODUCTS

ENHANCING YOUR NUTRITION

PROGRAM

MAKING YOU MORE

PROFITABLE

**Contact your beef territory
manager to learn more:**

Jessica Hextall (204)901-3058

trouw nutrition
a Nutreco company



Lot 35H

FLAD FLADELAND HENERY 35H

35H

CDGV174281

Red / Polled / PC88

DCSF POST ROCK POWER BUILT 37B8
 LRSF LRL DEWALT F148
 LRSF NELLIE C62
 FLAD FLADELAND GUNPOWDER 40Y
 FLAD FLADELAND FLIRT 4F
 FLAD FLADELAND SADIE 28X

May 3/20		FLAD 35H
Act BW	Adj WW	Adj YW
83	610	1070

CE	BW	WW	YW	MK	TM	MCE
13.4	-0.8	56	81	25	53	8

Here is another moderate birth weight Dewalt son. He is also out of a first calver FLAD 4F, she is a maternal sister to Fladeleland Element 21E and was the kids show heifer. FLAD 35H has volume and is loose hided. He may not be as smooth made as his brothers but still maintains the calving ease. We own Dewalt with JSJ livestock and he has done a great job in both herds. Twin.



Lot 39H

FLAD FLADELAND HUGO 39H

39H

CDGV174203

Red / Polled / PC50

ERIXON DEALER 63Z
 AJB FARMSTRONG 28C
 AJB DOUBLE ROCK LADY 6A
 FLAD FLADELAND BOURBON 31X
 FLAD FLADELAND ALERT 6A
 FLAD WILDROSE 124W

May 5/20		FLAD 39H
Act BW	Adj WW	Adj YW
72	570	936

CE	BW	WW	YW	MK	TM	MCE
10.6	0.5	63	96	26	57	4

FLAD 39H is out of a nice uddered Fladeleland Bourbon 31X daughter. 39H is the most moderate of the brothers in the sale. He is well balanced and stout with natural muscle. We are very impressed with the AJB Farmstrong 28C daughters we have in production.



RADVILLE **WEYBURN** **CARLYLE** **ASSINIBOIA**
 306-869-2277 306-842-6626 306-453-1333 306-642-3826

WWW.EBOURASSA.COM

FLAD FLADELAND HELIX 45H

45H

Black / Polled / BA50

CDGV174360

HAMI HF DECISIVE 56Z
RICHMOND CALL OF DUTY SRD 1C
 RICHMOND SPECIAL FATE SRD50A
 WRS SILENT STAN 20S
FLAD FLADELAND ZINC 66Z
 FLAD WENDY 200W

May 7/20		FLAD 45H
Act BW	Adj WW	Adj YW
82	603	1077

CE	BW	WW	YW	MK	TM	MCE
10.2	1.4	76	118	23	61	4

Twin. We have a small Balancer program. Our focus is to give the buyers another option to add a different twist to their program. We plan the matings to compliment both the continental and British genetics and to increase maternal strength. Both Call of Duty and FLAD 66Z have proven daughters that have excellent udders and are very functional.



FLAD FLADELAND HIJACK 48H

48H

Red / Polled / PC50

CDGV174259

ERIXON DEALER 63Z
AJB FARMSTRONG 28C
 AJB DOUBLE ROCK LADY 6A
 SLC HEAD START 37A ET
FLAD FLADELAND DYNASTY 75D
 FLAD WENDY LOU 140W

May 8/20		FLAD 48H
Act BW	Adj WW	Adj YW
81	607	1023

CE	BW	WW	YW	MK	TM	MCE
12.1	-0.2	57	82	24	52	5

FLAD 48H is the deepest, soggiest bull in the pen. He is soft made and loose hided with a moderate birth weight. His dam, FLAD 75D has a great udder and has the potential to be a front end female. 48H will make excellent replacement females that will be moderate made, sound and will have fantastic udders.



FLAD FLADELAND HOWDY 49H

49H

Red / Polled / Purebred

CDGV174254

RWG WAR ADMIRAL 2528
RWG RIGHT COMBINATION 5506
 SLC LORA 164Y
 SLC REBEL 225Z
FLAD FLADELAND CRUDEBEHAVIOR 8C
 FLAD FLADELAND MIDNIGHT 102Y

May 8/20		FLAD 49H
Act BW	Adj WW	Adj YW
100	689	1091

CE	BW	WW	YW	MK	TM	MCE
5.8	3	71	102	17	52	1

This is the strongest sent of RWG Right Combination 5506 bulls we have had to date. FLAD 49H is a solid, hard muscled bull that has a bit more birth weight than his brothers but is built smooth enough to calve easy. He will sire those heavy calves at sale time and will have desirable daughters just like his high quality dam FLAD 8C, who makes the good ones each year.



**FLAD FLADELAND DARRELL 52H****52H**

CDGV174249

Red / Polled / Purebred

RWG WAR ADMIRAL 2528
RWG RIGHT COMBINATION 5506
 SLC LORA 164Y
 SLC BEAR 176Y
FLAD FLADELAND CECILIA 4C
 FLAD FLADELAND AUDIO 23A

May 9/20		FLAD 52H
Act BW	Adj WW	Adj YW
77	625	1032

CE	BW	WW	YW	MK	TM	MCE
11.9	-1.6	57	84	21	49	5

52H is a typical Right Combination son. He is long bodied, smooth side with natural hard muscle and has a low birthweight of 77lbs. His dam, FLAD 4C is our favorite SLC Bear 176Y daughter. She has the ideal frame size with great structure, a ton of volume along with a sweet udder. She just has the whole entire package.

**FLAD FLADELAND HIGH TOWER 55H****55H**

CDGV174267

Red / Polled / Purebred

RWG WAR ADMIRAL 2528
RWG RIGHT COMBINATION 5506
 SLC LORA 164Y
 FLAD FLADELAND PAINKILLER 123C ET
FLAD FLAD FLADELAND EVIDENCE 1E
 FLAD FLAD FLADELAND BREW 5B

May 10/20		FLAD 55H
Act BW	Adj WW	Adj YW
94	624	1039

CE	BW	WW	YW	MK	TM	MCE
7.6	3.4	66	96	16	49	2

FLAD 55H is dark red, good haired and is sired by the ever popular RC who has had tremendous success in the show and sale rings. We bought into the semen rights of RC years ago because we felt he was a breed changer - and he has proven that over and over. He is either the sire or grand sire of many of the breeds front end herd bulls and females. Combining the solid pedigree on the top side with Fladeland Brew 5B on the bottom side shows how deep the maternal quality is.

**FLAD FLADELAND HAMMERTIME 56H****56H**

CDGV178435

Red / Polled / Purebred

JRI GUNG HO 282C51
FLAD FLADELAND ELEMENT 21E
 FLAD FLADELAND SADIE 28X
 FLAD FLADELAND BOOTLEGGER 21A
FLAD FLADELAND ELVIRA 179E
 SA BIRCH'S ANNY 196A

May 10/20		FLAD 56H
Act BW	Adj WW	Adj YW
95	591	1037

CE	BW	WW	YW	MK	TM	MCE
12.2	0.7	64	98	20	52	5

Another sound Fladeland Element 21E son who has the typical traits. Good haired, lots of volume, thickness and nuts. The dam of 56H is a Fladeland Bootlegger 21A daughter. We believe Bootlegger made one of the biggest impacts in our operation and Element is looking like he is following the same path. Both bulls progeny excel in great structure and have extra volume. The bulls are strong in the scrotal department and the females have high udder quality.

FLAD FLADELAND HALF LIT 67H

67H

Red / Polled / PC75

CDGV174314

WGG JUST GET-N-GO 90J

JSJ ELITE 22E

JSJ BEAUTY 6B

AJB FARMSTRONG 28C

FLAD FLADELAND MOONSHINE 108F

FLAD DJW FINE WINE 89W

May 11/20		FLAD 67H
Act BW	Adj WW	Adj YW
86	623	1014

CE	BW	WW	YW	MK	TM	MCE
11.8	1.4	60	83	20	50	3

We feel the Gelbvieh and Simmental compliments each other as we move forward in this breed up program. We are finding the females to be excellent milkers with strong tidy udders. That is exactly the type of the dam of 67H. The pedigree of 67H is interesting. It has a combination of calving ease from JSJ Elite 22E and some hybrid blood coming from AJB Farmstrong 28C.



FLAD FLADELAND HANK 70H

70H

Red / Polled / PC88

CDGV178436

RWG WAR ADMIRAL 2528

RWG RIGHT COMBINATION 5506

SLC LORA 164Y

FLAD XLT 16X

FLAD FLADELAND ADRENALINE 13Z

FLAD FLADELAND ACYN 26X

May 12/20		FLAD 70H
Act BW	Adj WW	Adj YW
95	677	1122

CE	BW	WW	YW	MK	TM	MCE
8.7	0.6	61	88	16	46	2

FLAD 70H is a lighter colored RC son with good length and big scrotal. We feel this bull will be a good fit if you're looking to increase your bottom line at the sales ring.



FLAD FLADELAND HERB 73H

73H

Red / Polled / PC50

CDGV174209

ERIXON DEALER 63Z

AJB FARMSTRONG 28C

AJB DOUBLE ROCK LADY 6A

FLAD FLADELAND CREEPIN 8Z

FLAD FLADELAND BATON 40B

FLAD EXPLOSIVE 185X

May 13/20		FLAD 73H
Act BW	Adj WW	Adj YW
101	635	1151

CE	BW	WW	YW	MK	TM	MCE
7.4	3.4	70	112	24	59	2

Here is the "Power House" of the pen with his extra frame, wide base, added length and overall muscle. FLAD 73H is good haired, good structured and he is a bull that gets out and travels well. Not only will 73H sire high performing cattle, you will still have the option to retain the females to be functional replacements as is his maternal sister FLAD 106D who is the dam of FLAD 83H.





FLAD FLADELAND HANSON BRO 83H 83H

CDGV174262

Red / Polled / PB94

RWG WAR ADMIRAL 2528
 RWG RIGHT COMBINATION 5506
 SLC LORA 164Y
 FLAD FLADELAND BOOTLEGGER 21A
 FLAD FLADELAND DEVISE 106D
 FLAD FLADELAND BATON 40B

May 14/20		FLAD 83H
Act BW	Adj WW	Adj YW
90	615	1184

CE	BW	WW	YW	MK	TM	MCE
7.8	2.4	67	110	19	53	1

This is our best RC bull this year. He is masculine, deep ribbed with a long deep quarter and has a strong wide top. His impressive dam FLAD 106D is a deep bodied, powerful Fladeland Bootlegger 21A daughter. She has a fantastic udder just like her dam FLAD 40B who is the dam of FLAD 73H. We feel 83H will work well in any herd and will move that operation to the next level.



FLAD FLADELAND HITMAN 88H 88H

CDGV178437

Red / Polled / PC75

JRI GUNG HO 282C51
 FLAD FLADELAND ELEMENT 21E
 FLAD FLADELAND SADIE 28X
 WRS SILENT STAN 20S
 FLAD FLADELAND 203B
 147U

May 15/20		FLAD 88H
Act BW	Adj WW	Adj YW
77	567	960

CE	BW	WW	YW	MK	TM	MCE
12.6	-0.1	60	87	24	54	5

FLAD 88H is soft made, deep and stout. Fladeland Element 21E split duties with us and Goodview Gelbvieh. At both places the bulls and females proved to be very consistent in their type and design and were very popular in last years sales. An Element son won the 2021 Canadian Gelbvieh bull futurity.

LOEWEN Inc. Agencies

Ask us how to protect today's
 investment with Mortality/Infertility
 insurance coverage

www.loewenagencies.com

FULL SERVICE INSURANCE BROKERS

(306)454-2411 or (306)869-7999 • bloewen@loewenagencies.com

"Big Enough to Know and Small Enough to Care"

FLAD FLADELAND HEARTBEAT 98H 98H

Red / Polled / Purebred

CDGV174256

RWG WAR ADMIRAL 2528
RWG RIGHT COMBINATION 5506
 SLC LORA 164Y
 SLC HEAD START 37A ET
FLAD FLADELAND DEUCE 2D
 FLAD FLADELAND BREW 5B

May 16/20		FLAD 98H
Act BW	Adj WW	Adj YW
95	667	1086

CE	BW	WW	YW	MK	TM	MCE
9.3	1	64	96	18	50	3

98H is the darkest bull in the pen. He is sharp fronted with adequate muscle and shape. His paternal brother Fladeland Gronk 23G ET was the Canadian National Grand Champion bull at Agribition 2021. A strong feature of 98H is his granddam FLAD 5B and his dam FLAD 2D who are both top producers. We are going to use a son of 2D, Fladeland Firestone 24J in our 2022 breeding season.

**FLAD FLADELAND HANGOVER 100H** 100H

Red / Polled / PC63

CDGV178438

RWG YIKES 1512
RWG COPY RIGHT 5428 ET
 CG BLACK OPAL 652S
 FLAD AXEL 27X
FLAD FLADELAND ZEST 40Z
 FLAD FLADELAND KATIE 3X

May 16/20		FLAD 100H
Act BW	Adj WW	Adj YW
91	613	1109

CE	BW	WW	YW	MK	TM	MCE
9	1.1	57	82	25	53	2

FLAD 100H is a hairy, lighter colored RWG Copyright son. He has the right amount of frame, performance and length of body. We feel he has good structure and will cover extra ground and is just the right type for the commercial industry.

**FLAD FLADELAND HICK 146H** 146H

Red / Polled / PC75

CDGV178439

RWG YIKES 1512
RWG COPY RIGHT 5428 ET
 CG BLACK OPAL 652S
 FLAD FLADELAND ARSON 98A ET
FLAD 188E
 FLAD FLADELAND ADMIRE 43A

May 26/20		FLAD 146H
Act BW	Adj WW	Adj YW
85	597	1073

CE	BW	WW	YW	MK	TM	MCE
11	0.2	58	81	20	49	4

This is probably the heaviest haired bull in the pen which is a trait of his grand sire Fladeland Arson 98A ET. The mating of Copyright and FLAD 188E clicked by maintaining a moderate birth weight with adequate performance.

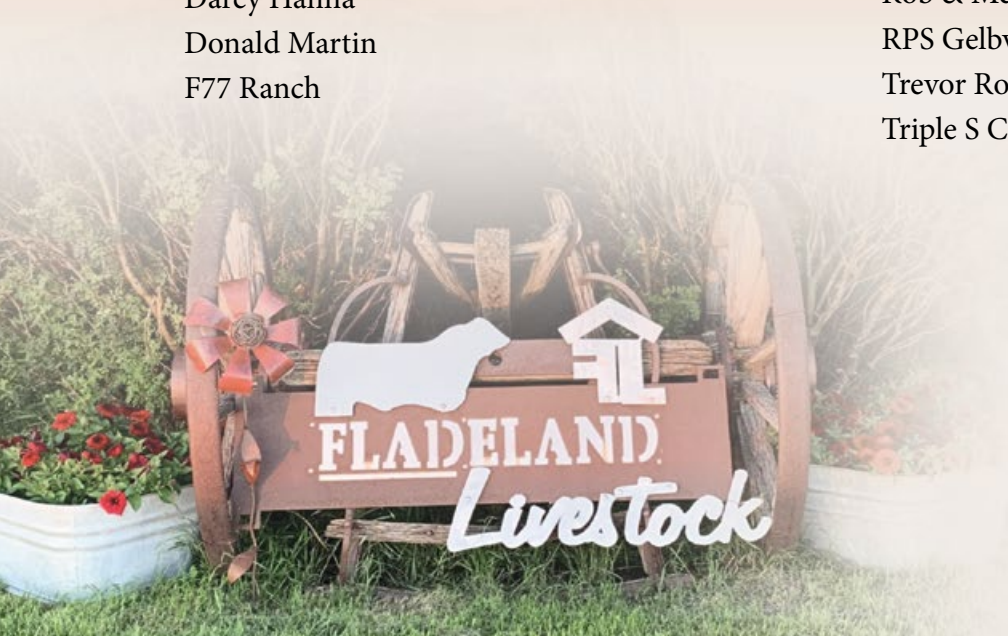


Thank You

To everyone for your **INTEREST AND SUPPORT IN 2021**

Allan & Robert DeVreese
Andrew & Wayne Skappel
Big Muddy Cattle Co.(3)
Blayne & Allison Klein
Bruce, Danette & Chris Montgomery(2)
Cole McHattie
Darcy Hanna
Donald Martin
F77 Ranch

Gary & Sharon Barrett(3)
Harvey, Sharon & Josh Hlavka
Jason, Lori-lee & Korbyn Petersen
Joe & Brent Lansing
John Golby
Marcus Bauer
Rob & Melissa McHattie
RPS Gelbvieh
Trevor Robinson
Triple S Cattle Company



Dr. Tiffany Jade Pomarenski D.V.M.

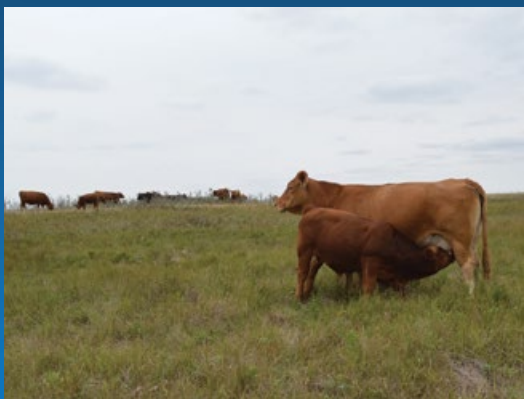
Large and Small Ambulatory Veterinary Services

Phone: 306-459-7832

Fax: 306-459-9992

Email: rytrailvetservices@gmail.com

Box 337, Ogema, SK, S0C 1Y0



It is our privilege to welcome you to our 2022 bull sale! When the going gets tough, the tough get going as they say. The past two years have been full of challenges for all of us which only makes this offering more rewarding for us. Despite the challenges, we believe the quality of our bull pen improves each year. We offer our ongoing thanks to our loyal customers for your continued support. The cattle are simply the vehicle to the people and we value the relationships our cattle have created for us.

One of those great relationships is with the Fladeland family whom we have the greatest respect and admiration for. It is our pleasure to work with them again this year.

Our life revolves around the Gelbvieh breed! We are constantly evaluating, culling and working to improve our bottom line to help yours! It was a privilege for us to be named Premier Breeder and Exhibitor at both Canadian Gelbvieh shows this year and also to be chosen as Breeder of the Year by the Man/Sask Gelbvieh Association. These awards are appreciated but not what we hang our hat on. Producing cattle that work in all environments is our goal first and foremost. These awards are simply a little bonus.

We would like to explain our philosophy around feeding. We are very opposed to fat bulls! We do not creep feed at any stage of development and the only feed wagon we own is Aaron and Joe with a pail! Our bulls are fed by hand twice a day along with free choice grass hay, fresh straw and chelated mineral. We use a 14% bull developer pellet from Trouw Nutrition fed at 1.5% of body weight. Although it is additional work for us, we know this helps us properly manage healthy growth and development, eliminates any disposition concerns and increases longevity in your purchase. The bulls always have access to a large run and are often out moving, doing bull things and staying active. We could make them bigger, heavier and fatter but believe no one wins in that scenario. If we wouldn't use a bull ourselves, he is not included in this offering.

As always, our entire offering is DNA parent verified, polled and colour tested where necessary. Something new this year is genomically enhanced EPDs for our entire offering. This is a process where each individual's DNA is tested rather than just averaging their parents. This is believed to increase the accuracy of the EPD profile. As always, we believe EPDs are simply a small part of the selection process but we want to offer the most accurate information to our customers as possible.

It would be our privilege to tour you through the bull pen and the entire cowherd anytime. A bulls mother is one of the top selection criteria and we'd be happy to show her to you! If you can't make it to the farm, give us a call, use twinviewlivestock.com or come to Johnstone's! The bulls are available for viewing there March 15 and up until sale time on the 16th. Also be sure to come for lunch prior to the sale and bring the family for a visit!

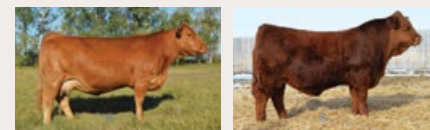
We look forward to talking with you soon!

Aaron & Joe



AARON BIRCH AND JOE BARNETT

Parkbeg, Saskatchewan | twinviewlivestock.com | (403) 485-5518



Left: AWB TWIN VIEW GRACIE GAYLE 78E ET, Dam of Lot 30
Right: AWB TWIN VIEW PREAKNESS 14H ET, Brother to Lot 30

AWB Twin View Certified 11J ET is big time power no matter how you choose to assess him. Cow family elite, big performance and a user friendly EPD profile, Certified brings it all together. He is a flushmate to Preakness who won the 2020 Canadian Bull Futurity. His first calves are coming now and look awesome! His dam, Gayle 78E, is building a legacy in this breed. Her commanding show record is impressive but her production record already exceeds measure. Maternal sisters to Certified were the talk of the town in 2021! Gracie Gayle 118J who was Junior Calf Champion at both Farmfair and Agribition and Gracie Gayle 74H was selected as the high seller by MacDonell Farms in Function and Finesse before becoming Champion Female at Farmfair and Reserve National Champion Female. If born naturally to his own mother we'd anticipate a 90-95lb birthweight. Certified has all the goods to be an influential, breed leading sire for all Gelbvieh breeders.

AWB TWIN VIEW CERTIFIED 11J ET

30

Red / Homozygous Polled / Purebred



CDGV175827

VV YOICKS 107Y
SA BIRCH'S WRANGLER 58A
VV WRUFFLE ME 18W
VV ZAKE 114Z
AWB TWIN VIEW GAYLE 78E ET
SA BIRCH'S GAYLE 48Z

Jan 19/21		AWB	11J
Act BW	Adj WW	Adj YW	
ET	618	1150	

CE	BW	WW	YW	MK	TM	MCE
8.1	2	66	94	24	57	4

AWB TWIN VIEW CANADIAN KID 31J

31

Heterozygous Black / Homozygous Polled / Purebred



CDGV175837

JDPD TIME TRAVELER 450X
JLSL APOLLO
JLSL PHOENIX
AWB BIRCH'S BLK POWDER 37Z ET
AWB BIRCH'S RAINBOW 123D
AWB BIRCH'S RAINBOW 177Z

Jan 26/21		AWB	31J
Act BW	Adj WW	Adj YW	
88	616	1160	

CE	BW	WW	YW	MK	TM	MCE
11	-0.1	68	100	16	50	5



Left: AWB BIRCH'S RAINBOW 123D, Dam of Lot 31
Right: JLSL APOLLO, Sire of Lot 31

AWB Twin View Canadian Kid 31J is your first opportunity to own an Apollo son in Canada. He is homo polled, hetero black and is backed by our Rainbow cow family which is a no miss, hardworking, perfect uddered cow family. His dam already has a son working for LCF Gelbvieh and was the sire of their consignment to the National Sale last fall. We've been admiring Apollo for several years and have been very impressed with his progeny. An Apollo daughter was the high selling heifer calf at Function and Finesse last fall to Braylen Blake Gelbvieh before becoming National Senior Calf Champion. Canadian Kid was a member of our show team last fall and was President's Classic Gelbvieh Champion at Agribition. He offers an extremely balanced EPD profile, enough calving ease to be used on some heifers, explosive growth, impressive muscle pattern and early maturity. Canadian Kid is your ticket!

KHR GRIZZLY RED 39F**RS**

Red / Homozygous Polled / Purebred

AMGV1424486

RWG TRACTION 7412
MCCA CORNHUSKER RED 524C
 MCCA ZIVA Z24
 RID R COLLATERAL 2R
KHR 703T
 KHR 533R

Mar 6/18		KHR 39F
Act BW	Adj WW	Adj YW
92	763	1209

CE	BW	WW	YW	MK	TM	MCE
14.6	0.8	69	95	21	56	7



Left: AWB TWIN VIEW QUEEN 34J, Daughter of Grizzly Red
 Right: AWB TWIN VIEW WYNNE 85J, Daughter of Grizzly Red



Grizzly Red has become well known in Gelbvieh circles and has been widely admired by many around the world. His story here has humble beginnings when we found ourselves borderline on having enough bull power. Our friend Samee was at the Kicking Horse sale in Montana and said she thought we might like him. We love him! Grizz has proven to be a Cadillac in terms of calving ease, adding style and presence, and producing consistent results. In 2020, he became the first Gelbvieh bull to win ORB Champion of the World and in 2021 we offered the unique opportunity to own semen interest in him. Thank you to Diamond Acre Farm and Foursquare Farms for their purchase. Grizzly Red will moderate frame, add style and enhance structural integrity from all angles. We have many daughters in the replacement pen and he will be our largest sire group this year. When you come for a tour, Grizzly Red is a must see!

AWB TWIN VIEW RED CARPET 5J**32**

Red / Homozygous Polled / Purebred



CDGV175809

MCCA CORNHUSKER RED 524C
KHR GRIZZLY RED 39F
 KHR 703T
 FRL FIR RIVER CROSBY 806A
AWB TWIN VIEW MACY 97G
 AWB BIRCH'S MACY 37A

Jan 17/21		AWB 5J
Act BW	Adj WW	Adj YW
71	638	1127

CE	BW	WW	YW	MK	TM	MCE
16	-0.4	61	86	26	56	8



Left: AWB TWIN VIEW MACY 97G, Dam of Lot 32
 Right: FRL FIR RIVER CROSBY 806A, Grandsire of Lot 32



AWB Twin View Red Carpet 5J has excited us from the moment he arrived. We don't want to oversell him but this DUDE is a stone cold STUD! His mother is a highly anticipated maternal sister to The Boxer. She is sired by Crosby, a trusted female maker, and out of the beautiful Macy 37A. Red Carpet recorded impressive performance data each step of the way and began at only 71 pounds with ample calving ease built in. He ranks in the top 10% of the breed for calving ease and also boasts impressive maternal and carcass numbers. Red Carpet is one we believe has great potential for the most critical Gelbvieh producers and we'll be following him closely. Calving ease, performance and maternal power wrapped in one - you really can have it all!

AWB TWIN VIEW BATON ROUGE 10J**33**

Red / Polled / Purebred



CDGV175946

MCCA CORNHUSKER RED 524C
KHR GRIZZLY RED 39F
 KHR 703T
 DF EXTRA 15U ET
CCCC ZEBRA PRINT
 HL PLD RITA 30R

Jan 19/21		AWB 10J
Act BW	Adj WW	Adj YW
102	626	1072

CE	BW	WW	YW	MK	TM	MCE
11.8	3.4	70	93	19	54	6



Left: CCCC ZEBRA PRINT 30Z, Dam of Lot 33
 Right: AWB CCCC ZEBRA PRINT 104D, Sister of Lot 33



AWB Twin View Baton Rouge 10J has been a personal favourite of Joe's from day one. This Grizzly Red son offers massive power and performance, an awesome disposition and breed leading foot structure. A maternal brother sold to Clay Ridge Farms, two maternal sisters sold to JSJ Livestock and we have a third one here who's just calved for the first time. Baton Rouge is about as long bodied as they come and his mother is one of our bigger cows who just had a full brother to Baton Rouge. These factors make his birthweight totally acceptable for us and we've seriously considered keeping Baton Rouge ourselves if we weren't using Grizzly so heavily already. Remember, the best power bulls don't start at 70 pounds!

REFERENCE *Sire***AWB BIRCH'S THE BOXER 21D**

RS

CDGV159336

Red / Homozygous Polled / Purebred

BLB GOODVIEW PDL THE ROCK 7Y
FLAD FLADELAND DJW ROCKM SOCKM
 FLAD DJW WINTER 202W
 VV YOICKS 107Y
AWB BIRCH'S MACY 37A
 JC PEMBINA MACY 623M

Jan 21/16		AWB 21D
Act BW	Adj WW	Adj YW
98	883	1364

CE	BW	WW	YW	MK	TM	MCE
8.1	2.8	74	102	25	62	4



Left: AWB BIRCH'S MACY 37A,
 Dam of The Boxer
 Right: AWB TWIN VIEW GRAFFITI 65J,
 Daughter of The Boxer, Sister of Lot 30

The Boxer certainly needs no introduction in the breed. He is part of an elite club of only two bulls in Gelbvieh history to win Agribition and then sire an Agribition Champion Bull and Female. The Boxer continues to prowl the pastures at Last Mountain Livestock. He has sired an absolutely dominant group of daughters including the 2021 Farmfair and Agribition Champion and Reserve females as well as a number of other young females who will chart the direction of our program for years to come. His sons have exceeded each and every test averaging nearly \$7200 to many reputation programs. With progeny on 3 continents, The Boxer's impact will be felt for years to come. You will find him the pedigree of lots 34 to 41. We will include him in our breeding plans as long as we have a semen bank. The Boxer is the real deal and here for the long haul!



Lot 34

AWB TWIN VIEW GRAFFITI 65J

34

CDGV175854

Red / Polled / Purebred

FLAD FLADELAND DJW ROCKM SOCKM
AWB BIRCH'S THE BOXER 21D
 AWB BIRCH'S MACY 37A
 VV TIREE 150T
AWB TWIN VIEW DISCO 87E
 AWB BIRCH'S DISCO 37C



Feb 10/21		AWB 65J
Act BW	Adj WW	Adj YW
97	599	1139

CE	BW	WW	YW	MK	TM	MCE
8.5	2.6	67	99	22	56	4



Left: AWB TWIN VIEW DISCO 87E,
 Dam of Lot 34
 Right: AWB TWIN VIEW DISCO 68H,
 Sister to Lot 34

AWB Twin View Graffiti 65J is a total beast! This impressive son of The Boxer is exceptionally soft made, dark hooped and shaggy haired. We aren't sure we can make one darker red. Graffiti has a massive middle third and big hip. His mother comes from our Disco family and is likely one of the highest volume cows you'll ever lay eyes on. She is a direct Tthree daughter who already has a daughter working here for us and we donated her second daughter to the Man/SK Gelbvieh Association raising \$11,000. Graffiti prowls the run like a cat and has an unmistakable herd bull look to him. Go ahead and paint the town with Graffiti!



Lot 35

AWB TWIN VIEW WALLSTREET 8J

35

CDGV175812

Red / Homozygous Polled / Purebred

FLAD FLADELAND DJW ROCKM SOCKM
AWB BIRCH'S THE BOXER 21D
 AWB BIRCH'S MACY 37A
 STON ACTION FIGURE 10A
AWB BIRCH'S JULIE 110D
 AWB BIRCH'S JULIE 10B ET



Jan 18/21		AWB 8J
Act BW	Adj WW	Adj YW
96	563	1043

CE	BW	WW	YW	MK	TM	MCE
10	2.2	67	97	18	51	5



Left: AWB BIRCH'S JULIE 110D,
 Dam of Lot 35
 Right: AWB BIRCH'S JULIE 10B
 ET, Granddam of Lot 35, Dam of
 Lot 47

AWB Twin View Wallstreet 8J is a very typical son of past National Champion, The Boxer. He's long sided, great footed, big nutted and attractive. His mother comes from the Julie cow family who consistently leave their mark here year after year. Wallstreet is homo polled, level topped and ranks in the top 20% of the breed for weaning and yearling values. We have sold two maternal sisters to his dam, one to Classic Cattle Co in Ontario and the other to Last Mountain Livestock. This pedigree is the perfect storm if you want to create elite replacement females. Wallstreet is a sure bet if you're in the business of making money.



Left: AWB TWIN VIEW SUGAR 26F, Dam of Lot 36 & 37
Right: VV TIREE 150T, Sire of Lot 36

AWB Twin View Pendleton 21J ET excites us on every level. He is smoother than the finest whiskey, built so right and offers all the bells and whistles you could ask for. Pendleton is the result of an ET mating between Sugar and Tiree 150T who was one of the best calving ease bulls we've used over the years. We only had 3 straws left before this flush so there was lots of discussion about the mating. Was Tiree the right bull? Damn right he was! In 2018, 3 of our 4 high selling bulls went back to Tiree on the cow's side. We have two elite full sisters to Pendleton and more maternal siblings on the ground. Of course, his mother needs no introduction as she is truly one of our crowning achievements in cattle production. Pendleton did not have a great recip mother, so his performance numbers are lower than we'd expect. If born naturally to his own mother we'd anticipate a 80-85lb birthweight. We are retaining half semen interest in Pendleton and will be incorporating him in our program. We believe he could be the next big thing in our breed. Get in early because the sky is the limit for Twin View Pendleton!



AWB TWN VIEW PENDLETON 21J ET 36

Red / Homozygous Polled / Purebred



CDGV175821

DEG PESO 286P

VV TIREE 150T

DTJ FANCY NANCY 506N

AWB BIRCH'S THE BOXER 21D

AWB TWIN VIEW SUGAR 26F

COX A LITTLE BIT OF SUGAR 24A

Jan 23/21		AWB	21J
Act BW	Adj WW	Adj YW	
ET	546	1034	

CE	BW	WW	YW	MK	TM	MCE
14.3	0.2	54	78	24	51	9

AWB TWIN VIEW KODIAK 61J 37

Red / Homozygous Polled / Purebred



CDGV175817

KCF BENNETT IDEAL G182

RUP RUPPLE YUKON 301P

RUP RASPBERRY 137M

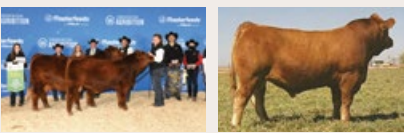
AWB BIRCH'S THE BOXER 21D

AWB TWIN VIEW SUGAR 26F

COX A LITTLE BIT OF SUGAR 24A

Feb 6/21		AWB	61J
Act BW	Adj WW	Adj YW	
86	616	1151	

CE	BW	WW	YW	MK	TM	MCE
11.3	0.2	64	98	28	60	10



Left: AWB TWIN VIEW SUGAR 26F & Lot 37, National Champion Female
Right: RUP RUPPLE YUKON 301P, Sire of Lot 37 & 38

AWB Twin View Kodiak 61J stood at Sugar's side becoming National Champion Female last fall. Truth be told, we really wanted Kodiak to come out a heifer calf but a genetic package like this will be good no matter what. He is gentle natured, exceptional footed, liver red, long sided and is every bit as good on paper as he is in the flesh. Gelbvieh excels as a maternal breed and Kodiak is truly the pinnacle of maternal power. He is bred to create the best females you'll ever own without compromising performance. His dam has been widely admired by producers of all breeds from around the world. She's already a National Champion, 2 time Champion of North America and a World Champion. We have no doubt Sugar will continue to write her page in Gelbvieh history and Kodiak is your opportunity to be a part of that.





AWB TWIN VIEW MIDNIGHT SUN 29J

38

CDGV175835

Red / Homozygous Polled / Purebred



KCF BENNETT IDEAL G182
RUP RUPPLE YUKON 301P
 RUP RASPBERRY 137M
 AWB BIRCH'S THE BOXER 21D
AWB TWIN VIEW SUNGOLD 47F
 ZTM MCCOY 66W SUNGOLD 126A

Jan 26/21		AWB 29J
Act BW	Adj WW	Adj YW
83	627	1090

CE	BW	WW	YW	MK	TM	MCE
11.7	-0.2	56	73	26	54	8



Left: AWB TWIN VIEW SUN-GOLD 47F, Dam of Lot 38
 Right: ZTM MCCOY 66W SUN-GOLD 126A, Granddam of Lot 38

AWB Twin View Midnight Sun 29J offers a new twist on a proven pedigree. He is sired by Ruppel Yukon who has made some great females in our breed. He offers moderate birthweight, ample performance in one of the longer sided packages in our offering. We would have really loved him to come out a heifer calf but we certainly aren't complaining. Rugged breeding bulls like Midnight Sun pay their way! A maternal brother sold last year to Harvey & Sharon Hlavka. His mother is typical of The Boxer daughters, moderate, soft made, beautifully uddered and sound. She's just had a third bull calf here and is made for the long haul. Midnight Sun will be a slam dunk female maker!



AWB TWIN VIEW MAYWEATHER 39F ET

RS

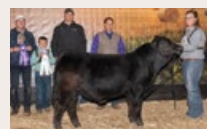
CDGV165576

Red / Homozygous Polled / Purebred

FLAD FLADELAND DJW ROCKM SOCKM
AWB BIRCH'S THE BOXER 21D
 AWB BIRCH'S MACY 37A
 CK HUSTLER 17T
AWB BIRCH'S NATALIE 22Z
 RPS X-GAL 128X

Jan 23/18		AWB 39F
Act BW	Adj WW	Adj YW
87	708	1233

CE	BW	WW	YW	MK	TM	MCE
8.1	1.7	66	93	22	55	3



Left: AWB BIRCH'S NATALIE 22Z, Dam of Mayweather
 Right: JLSL JIGSAW 128J, Son of Mayweather

Mayweather is from the first calf crop of The Boxer progeny and was Senior Calf Champion at Agribition and then Agribition Champion as a yearling. Our great friends in Washington, Samee and Pete Charriere, chose to use him to improve their red genetics. The results he has produced there are outstanding! Last fall a Mayweather son, Jigsaw, won the NILE, was Senior Calf Champion at Agribition and a finalist in the Canadian Bull Futurity. A daughter won Utah State Fair and was Reserve Female at the NILE. His first sons averaged over \$5800 last year. Mayweather is out of our impressive donor, Natalie 22Z, who now resides at Diamond Z Livestock and is chiseling her name into the hall of big time Gelbvieh females. We are calving the first Mayweather daughters now and if you've ever wanted to improve foot and udder quality Mayweather is the man for the job!



AWB TWIN VIEW AFFIRMED 81J

39

CDGV175865

Red / Homozygous Polled / PC75



AWB BIRCH'S THE BOXER 21D
AWB TWIN VIEW MAYWEATHER 39F ET
 AWB BIRCH'S NATALIE 22Z
 JRI GUNG HO 282C51
FLAD FLADELAND FLOWER 63F
 FLAD MAY 198U

Feb 16/21		AWB 81J
Act BW	Adj WW	Adj YW
88	702	1205

CE	BW	WW	YW	MK	TM	MCE
9	1.5	73	114	24	61	4



Left: FLAD FLADELAND FLOWER 63F, Dam of Lot 39
 Right: JRI GUNG HO 282C51, Grand sire of Lot 39

AWB Twin View Affirmed 81J tops the group in terms of power and performance. This Mayweather son is a great choice to add length of body, pounds and frame to your calf crop. He ranks in the top 10% of the breed for weaning and yearling values with ratios of 110 and 115. His marbling data puts him in the top 2%. Carcass data will become increasingly valuable in our industry and Affirmed gets the job done! Although we know he is straight Gelbvieh, Affirmed sells as a 75%. His mother was purchased through Function and Finesse and is an extremely attractive, heavy milking female with additional stretch much like Affirmed. If we were running a larger commercial herd, Affirmed would be sticking around. Pounds pay and that is affirmative.



Left: AWB BIRCH'S GRACE 178D, Dam of Lot 40
Right: AWB TWIN VIEW GRACE 48H, Sister to Lot 40

AWB Twin View Pharaoh 36J is a prime example of why Mayweather is proving himself as a potent breeding piece north and south of the 49th. Pharaoh is homozygous polled and has the look of a herd bull. We love his muscle pattern and softness which is consistent among the Mayweather offspring. Pharaoh's mother is a beauty! She is dark red with perfect foot and udder structure. Maternal sisters have sold to Diamond Acre Farm and MacDonell Farms as impressive lots in Function and Finesse. Pharaoh is a candidate to use on some heifers with just a 78 lb birthweight and a 13 CE EPD. He also ranks in the top 3% of the breed for marbling. Paper and in the flesh, Pharaoh is worthy of your consideration!



AWB TWIN VIEW PHAROAH 36J **40**

Red / Homozygous Polled / PC88



CDGV175839

- AWB BIRCH'S THE BOXER 21D
- AWB TWIN VIEW MAYWEATHER 39F ET**
- AWB BIRCH'S NATALIE 22Z
- VV WILLY WONKA WILL 44W
- AWB BIRCH'S GRACE 178D**
- AWB BIRCH'S GRACE 0203Y

Jan 28/21		AWB 36J
Act BW	Adj WW	Adj YW
78	549	1053

CE	BW	WW	YW	MK	TM	MCE
12.9	0.4	63	91	18	50	6

AWB TWIN VIEW CITATION 54J **41**

Red / Homozygous Polled / PC88

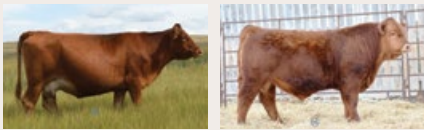


CDGV175848

- AWB BIRCH'S THE BOXER 21D
- AWB TWIN VIEW MAYWEATHER 39F ET**
- AWB BIRCH'S NATALIE 22Z
- LCR DILLINGER 908A
- AWB TWIN VIEW HOLDA 108F**
- VV MISS BALANCER 93Y

Jan 31/21		AWB 54J
Act BW	Adj WW	Adj YW
90	616	1116

CE	BW	WW	YW	MK	TM	MCE
8	0.6	63	91	25	57	3



Left: AWB TWIN VIEW HOLDA 108F, Dam of Lot 41
Right: AWB TWIN VIEW USHER 33H, Brother to Lot 41

AWB Twin View Citation 54J is another homozygous polled Mayweather son stamped just like his daddy. The muscle design, sound structure and presence of the Mayweather offspring is so consistent and undeniable. Citation has above average weaning and yearling ratios with an extremely balanced and user friendly EPD profile. His mother is one of our young cows with a very bright future. Her first son was chosen last year by the great folks at Fairhaven Farms. Citation's grandmother, 93Y, came through the V&V dispersal and is still going strong here. Longevity, cow power and performance make Citation a safe bet for your next herd bull!



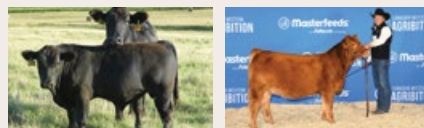
**DDGR THUNDER STRUCK 8F****RS***Black / Homozygous Polled / Purebred*

AMGV1423726

FHG FLYING H MR TRACTION 45B
FHG FLYING H GRAND SLAM 128D ET
 FHG FLYINH H MS MHD 139Y
 DDGR ALL IN 1A
DDGR 129D
 DDGR 146A

Feb 24/18		DDGR 8F
Act BW	Adj WW	Adj YW
84	780	1355

CE	BW	WW	YW	MK	TM	MCE
10	-0.3	64	105	22	54	6



Left: Thunder Struck and Dam
 Right: AWB TWIN VIEW GRACIE GAYLE 118J, Daughter of Thunder Struck

Thunder Struck came to us through the Gustin program in North Dakota. We appreciated his outcross pedigree after admiring his sire in Denver several years before. After several trips through the Gustin herd we commended the consistency of their cowherd and felt there was a great deal to gain from their progressive operation. Our Thunder daughters look to have bright futures and the first daughters calving now have perfect udder and teat shape. A daughter, Gayle 118J, was Junior Champion Heifer Calf at both Farmfair and Agribition and has entered our ET program. His first sons averaged \$5050 last year. He consistently adds length of body, tidies front ends and improves skull design. There's plenty of calving ease to boot!

**AWB TWIN VIEW LIGHTENING 50J****42***Red / Homozygous Polled / Purebred*

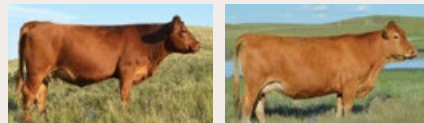
CDGV175845



FHG FLYING H GRAND SLAM 128D ET
DDGR THUNDER STRUCK 8F
 DDGR 129D
 TVR DUCK DYNASTY 648D
AWB TWIN VIEW MARGE 102F
 SA BIRCH'S MARGE 169A

Jan 30/21		AWB 50J
Act BW	Adj WW	Adj YW
79	618	1150

CE	BW	WW	YW	MK	TM	MCE
9.1	0.7	70	106	22	57	5



Left: AWB TWIN VIEW MADGE 102F, Dam of Lot 42
 Right: SA BIRCH'S MARGE 169A, Granddam of Lot 42

AWB Twin View Lightening 50J is a homo polled herd bull prospect with just a 78lb birthweight and then had a weaning and yearling ratios over 100. He ranks in the top 15% of the breed for both weaning and yearling as well. His mother is an unassuming cow who is now two for two on producing herd bull prospects. A maternal brother sold last year to Hardy & Rae Letain. Thunder Struck is a bull whose value we won't fully realize until his daughters are in production. His first sons were well received last year and a daughter was Belle of the Ball amongst Gelbvieh heifer calves last fall. If you're looking to add some stretch, power and frame, Lightening will take you there.

**AWB TWIN VIEW STORM CHASER 110J****43***Heterozygous Black / Scurred Polled / Purebred*

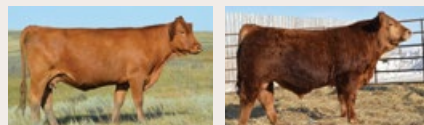
CDGV175888



FHG FLYING H GRAND SLAM 128D ET
DDGR THUNDER STRUCK 8F
 DDGR 129D
 SA BIRCH'S MONOPOLY 168A
AWB TWIN VIEW MALIBOU 199D
 SA BIRCH'S MALIBOU 102Z

Mar 3/21		AWB 110J
Act BW	Adj WW	Adj YW
84	643	1116

CE	BW	WW	YW	MK	TM	MCE
12	1.2	58	90	27	56	6



Left: AWB BIRCH'S MALIBOU 199D, Dam of Lot 43
 Right: AWB TWIN VIEW SILENT TYPE 60G, Brother of Lot 43

AWB Twin View Storm Chaser 110J is a hetero black candidate for the heifer pen with his extremely smooth shoulder and tidy skull shape. His mother is a long bodied, ideally uddered cow who has already sent two offspring south. A son works for Golden Buckle Gelbvieh in North Dakota and a daughter at Ledgerwood Gelbvieh in Washington. Her heifer calf this year is already catching our attention. The Thunder sons were very well accepted last year for their added stretch and frame. Storm Chaser follows suit and we anticipate he will be a trouble free breeding bull for years to come.

AWB TWIN VIEW MUCHO GUSTO 75J 44

Red / Homozygous Polled / Purebred



CDGV175861



Lot 44

DDGR RESILIENT 275D
AWB TWIN VIEW GUSTO 49G ET
 JSJ BAHA 35B
 AWB BIRCH'S KNOCK OUT 25D
AWB TWIN VIEW JULIE 69F
 AWB BIRCH'S JULIE 28B ET

Feb 14/21	AWB 75J	
Act BW	Adj WW	Adj YW
102	651	1144

CE	BW	WW	YW	MK	TM	MCE
5.9	2.1	66	93	23	56	5



Left: AWB TWIN VIEW JULIE 69F, Dam of Lot 44
 Right: AWB TWIN VIEW GUSTO 49G, Sire of Lot 44

AWB Twin View Mucho Gusto 75J is a big time power bull who's going to sire easy feeding, stout made steer calves and awesome replacement heifers. His sire, Twin View Gusto, is a bull we raised and own with MacDonell Farms. We like to layer the best cows in the breed in each mating. Mucho Gusto combines the elegant and maternal Julie cow family with the brute force of the great Baha. We admire Mucho Gusto for his genetic power and have no concerns at all about his birthweight. Big time power bulls don't start at 70 pounds.

JLSL BONANZA 929G RS

Black / Homozygous Polled / Purebred

AMGV 1454982



REFERENCE Sire

JOB DANELL TD CHICO LOCO 28Y
EGL CHICO LOCO E7190
 ABLT MS IMPACT 5Y
 JDPD TIME TRAVELER 450X
JLSL 383A
 JLSL ROXXY

Feb 10/19	JLSL 929G	
Act BW	Adj WW	Adj YW
85	728	1324

CE	BW	WW	YW	MK	TM	MCE
16	-0.9	66	93	13	46	8



Left: AWB TWIN VIEW NATALIE 23J ET, Daughter of Bonanza
 Right: AWB TWIN VIEW VENETTA 99J, Son of Bonanza

We are constantly seeking the best and brightest in Gelbvieh genetics. While Aaron was in Denver two years ago he came across Bonanza in the Ledgerwood string. He was blown away by his muscle dimension, exceptional foot, the way he combined calving ease and power and his early maturing look. Although we weren't needing a black bull at the time, we knew our good friends at Diamond Z Livestock were. We are very proud they were willing to work with us in bringing Bonanza to Canada and thrilled they let us be a small part of him. If this first calf crop is any indication, Bonanza will prove worth his weight in gold! Calves come easy and display plenty of early growth and maturity.

AWB TWIN VIEW AVENGER 7J 45

Homozygous Black / Homozygous Polled / Purebred



CDGV175811



Lot 45

EGL CHICO LOCO E7190
JLSL BONANZA 929G
 JLSL 383A
 RWG TENNESSEE CAT 7104
TVR MISS PARADISE 218Z
 DL JEN-TY PARADISE 152R

Jan 18/21	AWB 7J	
Act BW	Adj WW	Adj YW
89	618	1082

CE	BW	WW	YW	MK	TM	MCE
11.2	0	64	88	12	44	6



Left: TVR MISS PARADISE 218Z, Dam of Lot 45
 Right: AWB TWIN VIEW BLUE COLLAR 38H, Brother to Lot 45

AWB Twin View Avenger 7J is one of our true feature black bulls for 2022. He is from the first crop of JLSL Bonanza progeny with a really balanced side profile and easy performing look. He is homo polled, homo black and combines moderate birth with big performance. He's had a real herd bull look about him along with an extremely balanced EPD profile. Two maternal brothers sold to MacDougall Ranch, another to Derrick Zell, and a fourth to Triple G Ranch Gelbvieh. Avenger is sound and we really love his muscle pattern. Avenger will make his mark!



AWB TWIN VIEW INITIATION 107J

46

Heterozygous Black / Homozygous Polled / PC88



CDGV175885

EGL CHICO LOCO E7190

JLSL BONANZA 929G

JLSL 383A

SA BIRCH'S OFF ROAD 160Y

AWB BIRCH'S LUSTER 88D

AWB BIRCH'S LUSTER 308A

Jan 28/21

AWB 107J

Act BW	Adj WW	Adj YW
84	566	1041

CE	BW	WW	YW	MK	TM	MCE
16.5	-2.9	53	71	16	42	8



Left: AWB BIRCH'S LUSTER 88D, Dam of Lot 46
Right: AWB TWIN VIEW LUSTER 90G, Sister to Lot 46

AWB Twin View Initiation 107J is a surefire calving ease prospect with plenty of maternal power behind him. He's heterozygous black and homozygous polled with more than enough calving ease to get all your heifers bred. His EPD profile puts him in the top 4% of the breed for calving ease and birthweight. To top it off, he's super cool to admire! Initiation is built right from the ground up, big middled and really ideal in his design. A very popular maternal brother named Chute Boss sold to 4 Bar F Ranch and a sister to Braylen Blake Gelbvieh. Initiation suits his name to a T because that is exactly what he's going to do for your heifer pen!



AWB TWIN VIEW STALLION 74J

47

Heterozygous Black / Polled / Purebred



CDGV175860

EGL CHICO LOCO E7190

JLSL BONANZA 929G

JLSL 383A

JRI HEAVY EQUIPMENT 125M3

AWB BIRCH'S JULIE 10B ET

AR JULIE 14J

Feb 14/21

AWB 74J

Act BW	Adj WW	Adj YW
72	552	990

CE	BW	WW	YW	MK	TM	MCE
17.2	-2.6	52	66	16	42	9



Left: AWB BIRCH'S JULIE 10B ET, Dam of Lot 47 & Granddam of Lot 35
Right: AWB TWIN VIEW JULIE 38F, Sister to Lot 47

AWB Twin View Stallion 74J is an absolute runaway when it comes to calving ease. This heterozygous black son of Bonanza boasts a 72 pound birthweight, a whopping 17 CE direct number with nearly a -2.5 BW EPD. Maternal sisters are working for Classic Cattle Co and Last Mountain Livestock and a third one is the dam of lot 35. A maternal brother sold last year to Gary & Sharon Barrett. Stallion is smooth made and long bodied with plenty of look to him. He's sure to be a stud in your heifer pen for years to come!



AWB TWIN VIEW LAST STAND 124J

48

Red / Homozygous Polled / Purebred



CDGV175896

EGL CHICO LOCO E7190

JLSL BONANZA 929G

JLSL 383A

JRI HEAVY EQUIPMENT 125M3

AWB BIRCH'S JULIE 28B ET

AR JULIE 14J

Mar 12/21

AWB 124J

Act BW	Adj WW	Adj YW
99	636	1117

CE	BW	WW	YW	MK	TM	MCE
11.2	0.2	65	90	16	48	6



Left: AWB BIRCH'S JULIE 28B, Dam of Lot 48 & Granddam of Lot 44
Right: AR JULIE 14J, Granddam of Lot 47 & 48

AWB Twin View Last Stand 124J is the youngest in our offering but he has kept right up with his pen mates. His mother has long been one of the first cows noticed on pasture tours. She's a direct daughter of AR Julie 14J and has about as much volume as you can put in one. Last Stand's maternal sister is the dam of lot 44. We've admired this first Bonanza calf crop all year with their really functional and easy doing look. Last Stand had weaning and yearling ratios both over 100. Analyze him in the flesh then take the time really break him apart on paper and you'll see Last Stand checks all the boxes.

Red / Homozygous Polled / Purebred



CDGV175879

EGL CHICO LOCO E7190

JLSL BONANZA 929G

JLSL 383A

BLB GOODVIEW PLD DRAKE

AWB TWIN VIEW PATSY 127F

AWB BIRCH'S PATSY 119C

Feb 25/21	AWB 99J	
Act BW	Adj WW	Adj YW
94	637	1117

CE	BW	WW	YW	MK	TM	MCE
15.8	-0.9	60	74	19	49	9



Left: AWB TWIN VIEW PATSY 127F, Dam of Lot 49
Right: AWB TWIN VIEW PATSY 47H, Sister of Lot 49



Lot 49

AWB Twin View Vendetta 99J has been a fan favourite around here from an early age. We chose him to promote our program and he became National Junior Calf Champion. We love his volume, muscle shape, width of top and liver red colour. His dam is a truly ideal Drake daughter who exemplifies the maternal prowess of the Gelbvieh breed. She is moderate framed, hard working, perfectly uddered and has a great disposition. A maternal sister to Vendetta was a high-light in Function and Finesse 2.0 to Keriness Cattle. Vendetta's pedigree and structural design read calving ease deluxe! He combines many of our calving ease bulls including Bonanza, Drake and Trixter. He is smooth fronted and narrow across his skull along with a negative birthweight EPD and ranks in the 5% of the breed for calving ease. We have every intention of using him in our own program and are retaining 50% semen interest. Vendetta is the real deal!

Thank You

OUR LOYAL CUSTOMERS IN 2020

- Gary Barrett
- Braylen Blake Gelbvieh
- Bar 3T Livestock
- Diamond Z Livestock
- Diamond Acre Farms
- Fairhaven Farms
- Foursquare Farms
- Green Acres Cattle Company
- Gyman Livestock
- Jensen Ranch
- Jonus Cattle
- JSJ Livestock
- Krusky Family
- Keriness Cattle
- Lazy HJ Land & Cattle
- Ledgerwood Gelbvieh

- MacDonell Farms
- Marcel Unser
- Parker Mann
- Hardy Letain
- Les Wiebe
- Jesse and Gail Sonntag
- Triple S Cattle Company
- Twin Bridge Farms
- Triple G Ranch
- Unger Land & Livestock
- Derrick Zell



Raising cattle under the Verified Beef Production protocols

TWIN VIEW LIVESTOCK
Box 97
Parkbeg, Saskatchewan
S0H 3K0

*If you wish to stop receiving this catalogue please call or text
Joe at (403) 465-2805 to be removed from the mailing list.*

FLADELAND GRONK 23G ET

Grand Champion Bull 2021 CANADIAN WESTERN AGRIBITION

AWB TWIN VIEW SUGAR 26F

Grand Champion Female 2021 CANADIAN WESTERN AGRIBITION



PATERNAL BROTHERS SELL

SONS & BROTHERS SELL

FLADELAND LIVESTOCK and TWIN VIEW LIVESTOCK BULL SALE